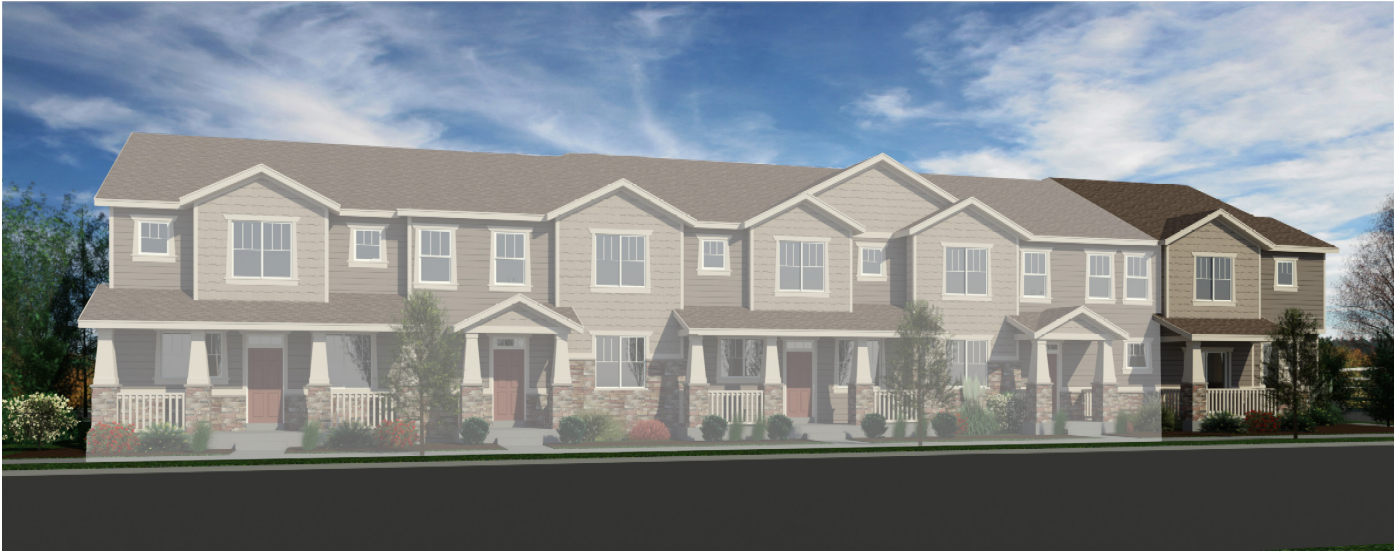


THE POINTE AT BUFFALO RUN

The Calvin
1,846 SQ FT | 3 BED | 2.5 BATH | 2-CAR GARAGE



CRAFTSMAN (A)



TRADITIONAL (B)

11932 Norfolk Court, Commerce City CO 80022

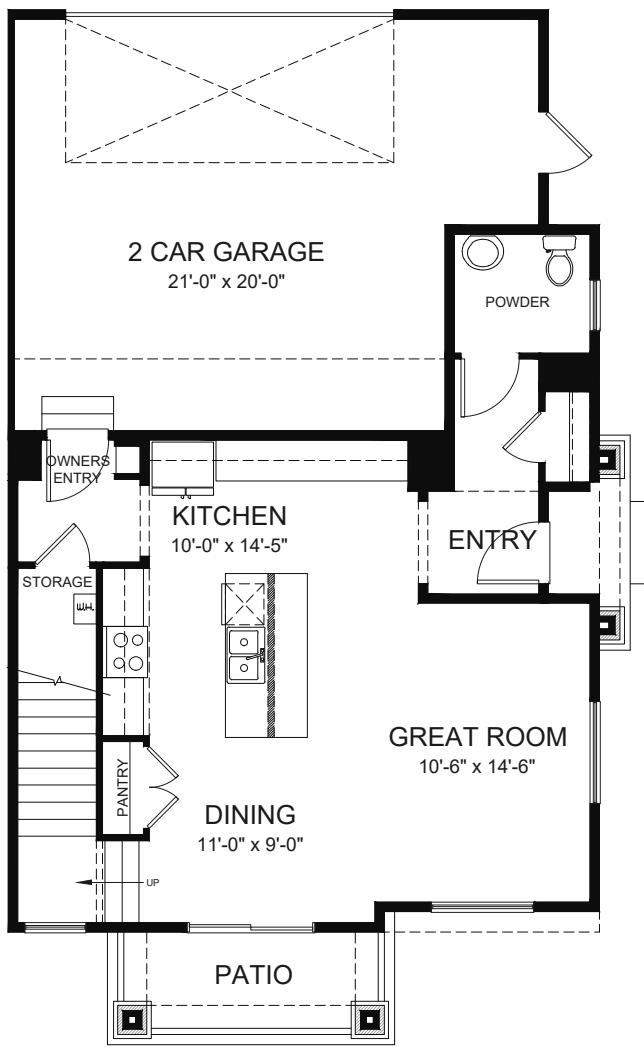
LOKALHOMES.COM | 720.656.4512



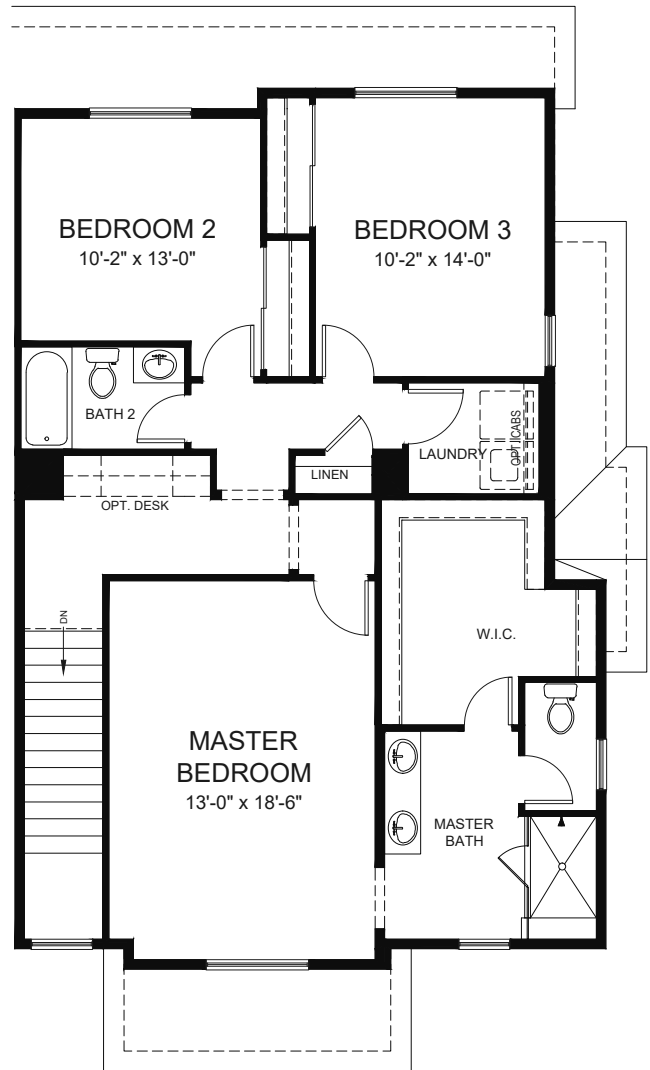
All information deemed reliable as of publication date but not guaranteed and remains subject to change daily or delay without notice. Floor plans and elevations are an artist's conception and are not intended to show specific detailing. As-Built Condition will control. Price(s) shown may not reflect lot premiums, upgrades and options. All homes subject to prior sale. Maps and plans are not to scale and all dimensions and square footages are approximate. Not an offer in any state where prohibited or otherwise restricted by law. Please see a Community Sales Manager and visit www.lokalhomes.com for details. © 2019 LokAl Homes, LLC. No reproductions or other use of these plans may not be without the express written consent of LokAl Homes, LLC.

THE POINTE AT BUFFALO RUN

The Calvin
1,846 SQ. FT | 3 BED | 2.5 BATH | 2-CAR GARAGE



FIRST FLOOR



SECOND FLOOR

11932 Norfolk Court, Commerce City CO 80022

LOKALHOMES.COM | 720.656.4512



All information deemed reliable as of publication date but not guaranteed and remains subject to change daily or delay without notice. Floor plans and elevations are an artist's conception and are not intended to show specific detailing. As-Built Condition will control. Price(s) shown may not reflect lot premiums, upgrades and options. All homes subject to prior sale. Maps and plans are not to scale and all dimensions and square footages are approximate. Not an offer in any state where prohibited or otherwise restricted by law. Please see a Community Sales Manager and visit www.lokalhomes.com for details. © 2019 Lokal Homes, LLC. No reproductions or other use of these plans may not be without the express written consent of Lokal Homes, LLC.