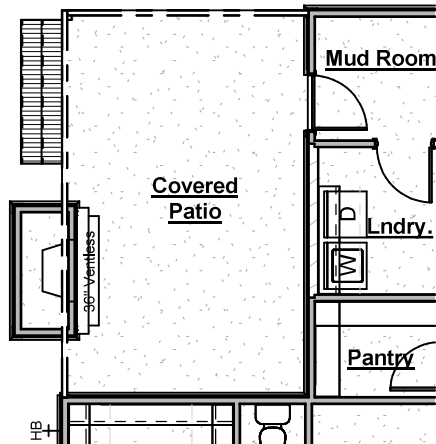


the FOXGLOVE

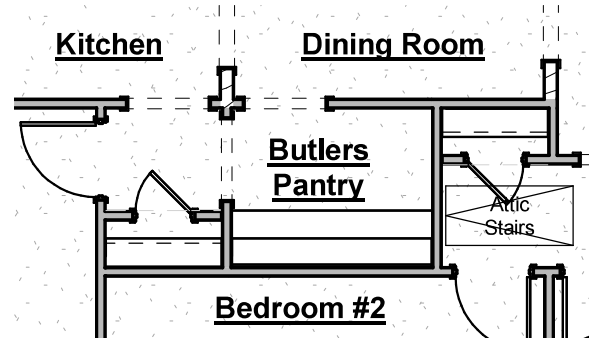
...

Plan Options



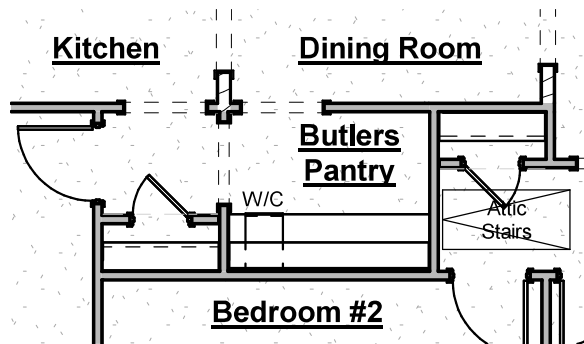
Outdoor Gas Log Fireplace

-Adds outdoor fireplace with siding or brick to match house, cedar beam mantel, firebox, gas logs & electrical outlet above fireplace



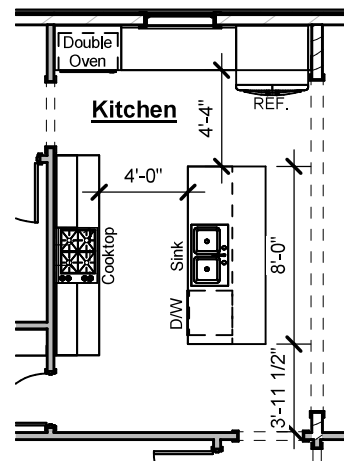
Butler's Pantry

-Adds approximately 85" of upper & lower cabinets, countertops & backsplash



*Butler's Pantry
with Beverage Cooler*

-Eliminates cabinet base to allow for 24" beverage cooler & includes electrical outlet
-Beverage cooler is not included and may be selected at design

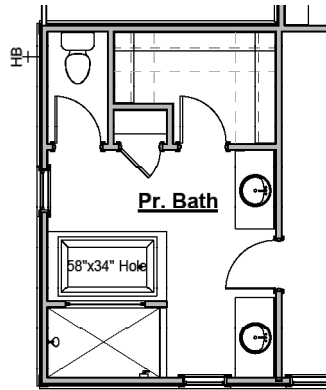


Chef's Kitchen with Double Oven

-Includes Frigidaire Gallery cooktop, wood hood, 2 wall ovens, microwave in island & dishwasher

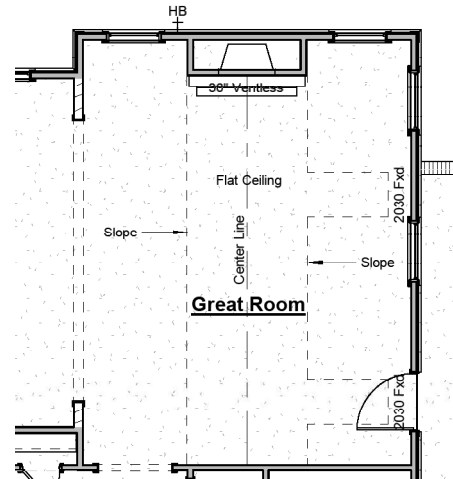


HARRIS DOYLE
HOMES

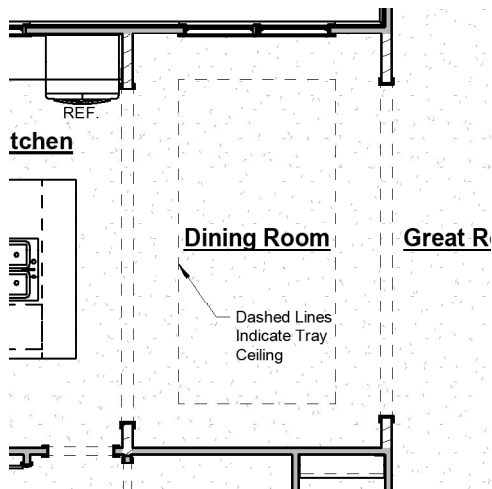


Primary Bathroom Tub

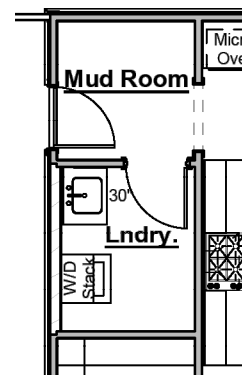
-Adds drop in tub with tile surround



Great Room Vaulted Ceiling



Dining Room Tray Ceiling



Laundry Room Sink

- Includes stainless sink with 30" base cabinet, cabinet hardware and countertop
- Cabinet base and countertop can be replaced with a freestanding utility sink
- Does not include stacking kit for washer & dryer

Other Options

- Guest Bath Syn-Iron Tub Shower with Tile Surround
- Pedestal Tubs
- 8' Interior Doors on Main Level

*Certain structural options may not be available due to lot restrictions and/or selection of other options. Prices subject to change without notice.



HARRIS DOYLE
HOMES



LIFE WELL CRAFTED



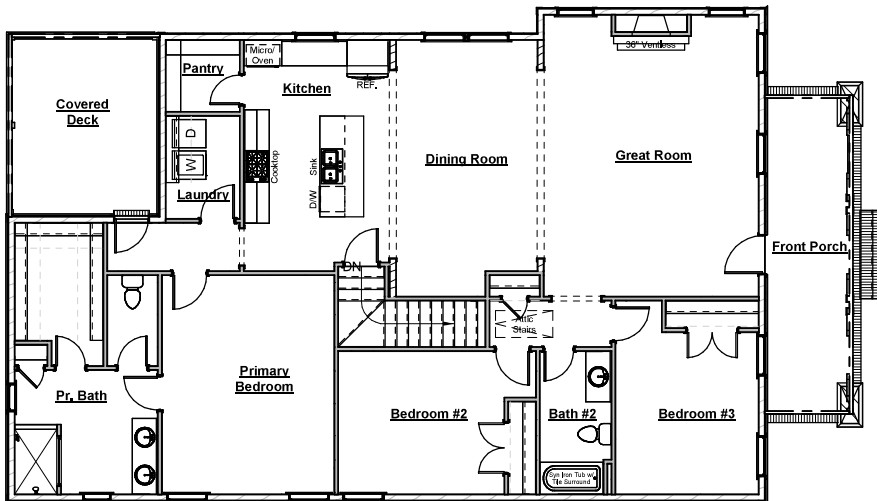
HARRISDOYLE.COM



facebook.com/harrisdoylehomes

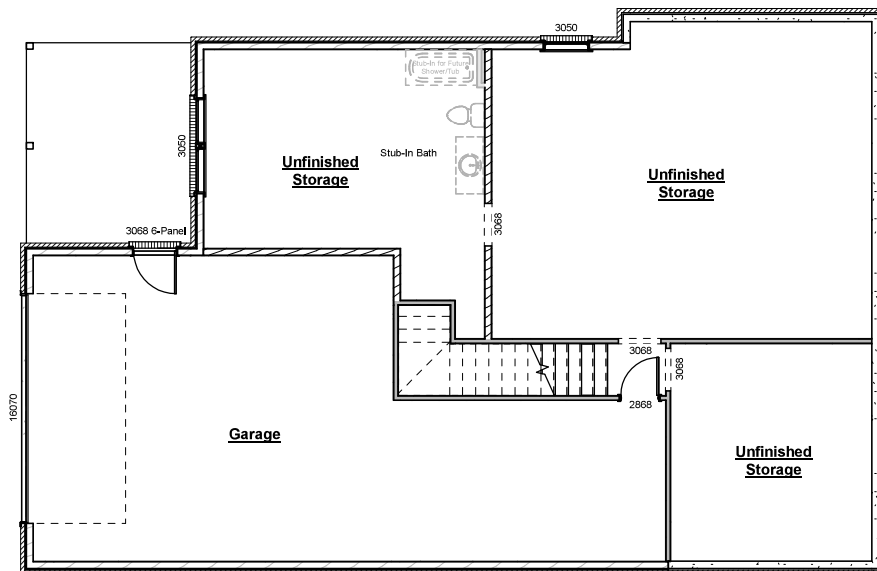


@harrisdoylehomes
#harrisdoyle



1st Floor Plan for Basement Plan

- Pocket Office is replaced with Stair Hall
- Pantry re-locates to replace previous Mud Room location
- Previous Pantry location replaced with Hall
- New access location for Primary Bedroom, Laundry room, and Covered Deck
- Primary Bedroom walk-in closet increases to 75sf with the addition of new Hall

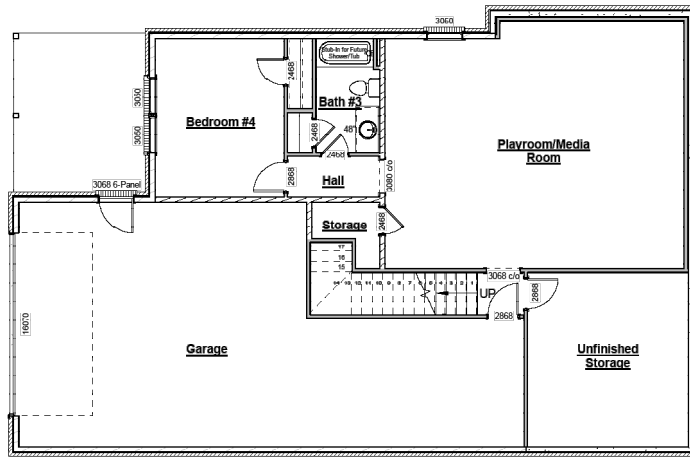


Unfinished Basement

- Adds approximately 1,440 sf of unfinished space

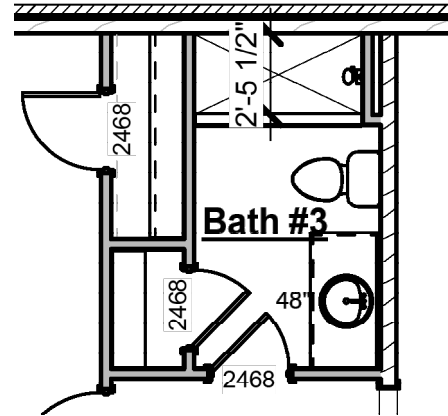


HARRIS DOYLE
HOMES



Finished Basement

- Adds approximately 982 sf of finished space & 439 sf of unfinished space
- Play Room, Media Room, additional bedroom, full bathroom & unfinished storage
- Carpet floors in Play Room, Media Room, additional bedroom & stairs
- Full bath includes sink with cabinet base, mirror, toilet & fiberglass shower/tub & tile floor



Basement Bath 3 Tile Shower

- Replaces tub/shower unit with tile shower
- Includes tile walls & floor, shower head/valve & 4" curb
- Shower enclosure not included & may be purchased at design

*Certain structural options may not be available due to lot restrictions and/or selection of other options. Prices subject to change without notice.



HARRIS DOYLE
HOMES

...

LIFE WELL CRAFTED



HARRISDOYLE.COM



facebook.com/harrisdoylehomes



[@harrisdoylehomes](https://twitter.com/harrisdoylehomes)
[#harrisdoyle](https://twitter.com/harrisdoyle)