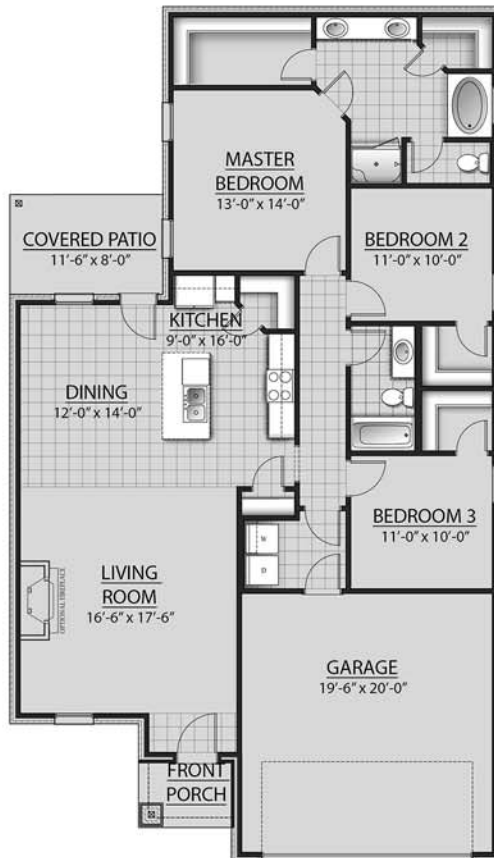


# THE DOGWOOD J IV PLAN



## Living Area

1660 Square Feet

## Total Area

2212 Square Feet

## Features

- Open Floor Plan
- 3 Bedrooms, 2 Bathrooms
- Brick & Siding Exterior
- Double Master Vanity
- Walk-In Master Closets
- Garden Master Tub
- Separate Master Shower
- Walk-In Pantry
- Recessed Can Lighting in Kitchen
- Two Car Garage
- Covered Rear Patio



Floor plans and elevations are subject to change without notice. Elevations and renderings are artistic conceptions and may not accurately depict home styles. Windows, doors and plan configurations are subject to change per elevation. Information contained in this flyer is subject to errors, omissions, changes, withdrawals and prior sales without notice.