

Gabriella



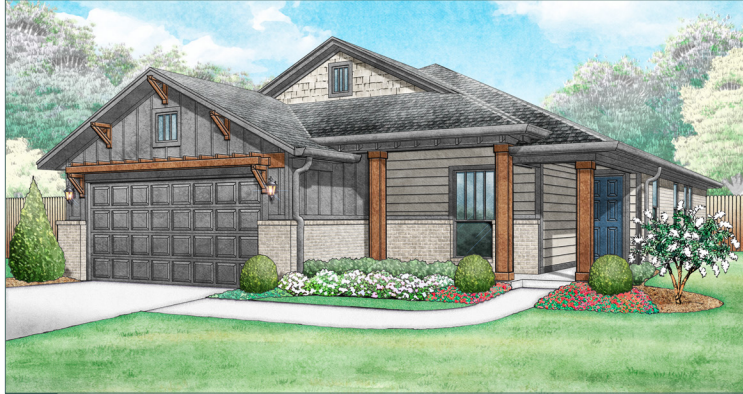
1,586 sq ft



3 bed



2 bath



a

craftsman



b

modern



e

mountain cottage



f

modern

FEATURES YOU'LL LOVE ABOUT THIS HOME

mud room at the garage
entrance with a bench

storage options including a
pantry and utility room

master suite with a spacious
walk-in closet

an open, linear design to keep fun flowing
when you are entertaining

ample kitchen counterspace and windows
above the sink for backyard views



IDEAL
homes | neighborhoods®



**HERE'S HOW WE DEVELOP
EVERY IDEAL FLOOR PLAN:**

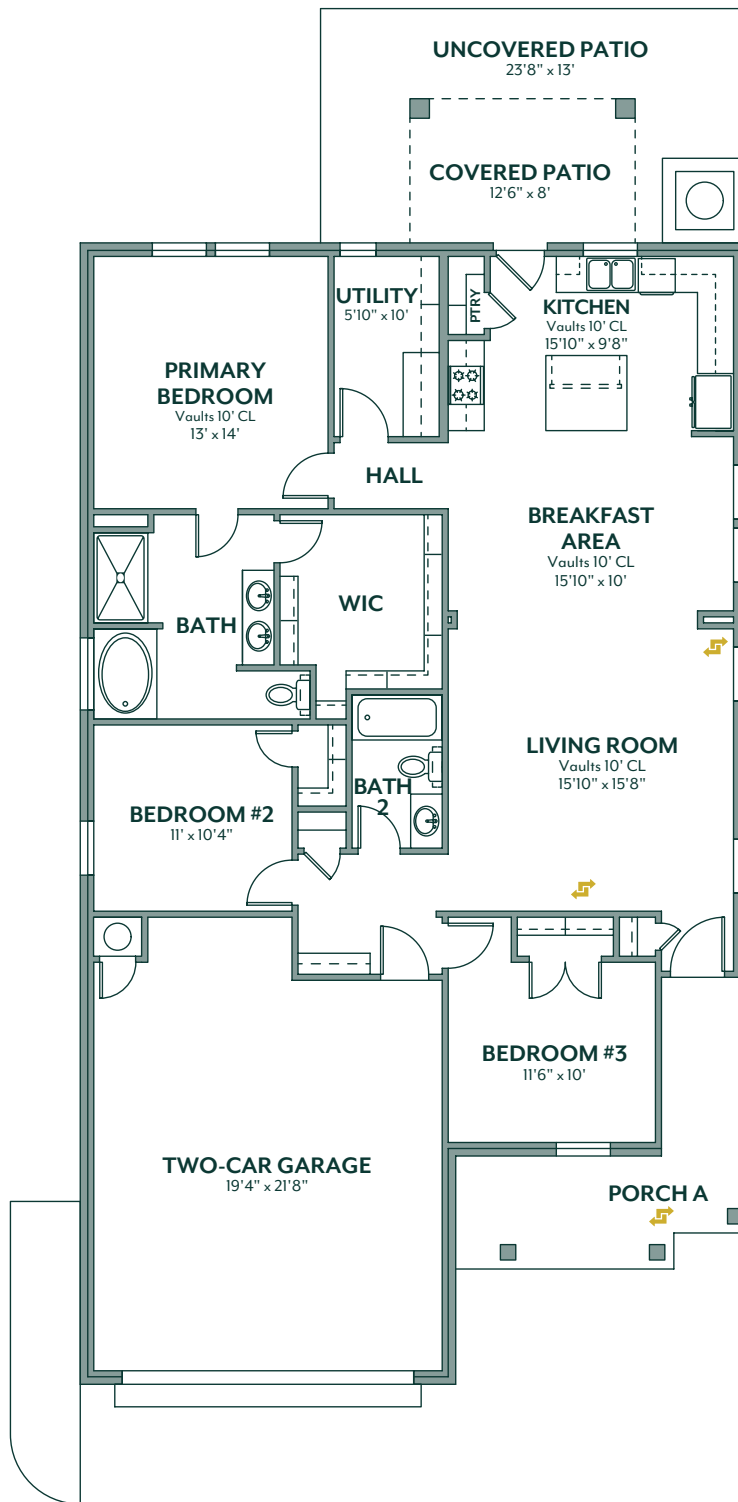
We consider everything ...

- sight lines & traffic flow
- furniture placement
- usable space
- architectural details

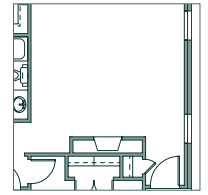
- window placement & size for optimal lighting
- function & low maintenance needs

405.364.1152

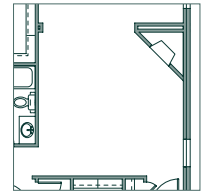
www.idealhomes.com



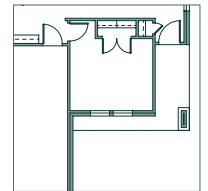
✓ customize this plan



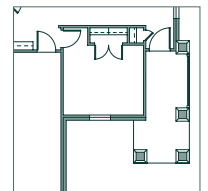
fireplace



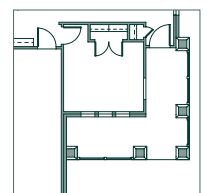
corner fireplace



porch b



porch e



porch f



Scan the code to view a **photo gallery & included features**
for the Gabriella floor plan