

DESIGN

PITTSBURG - 5410



A



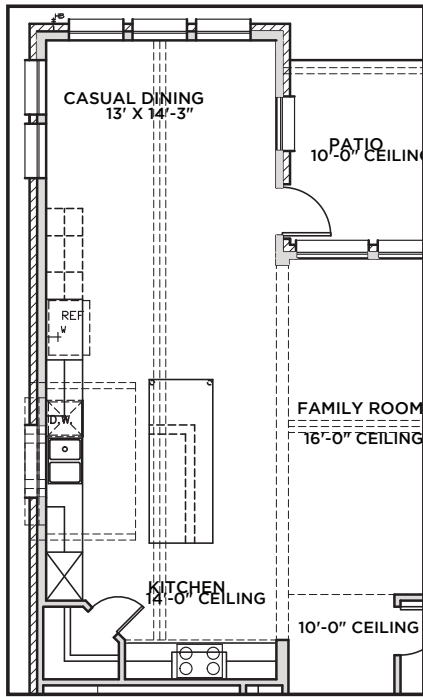
C



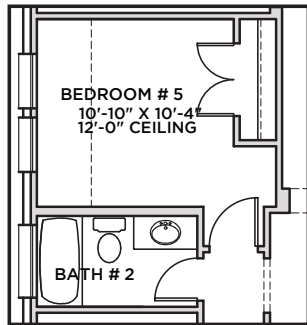
D



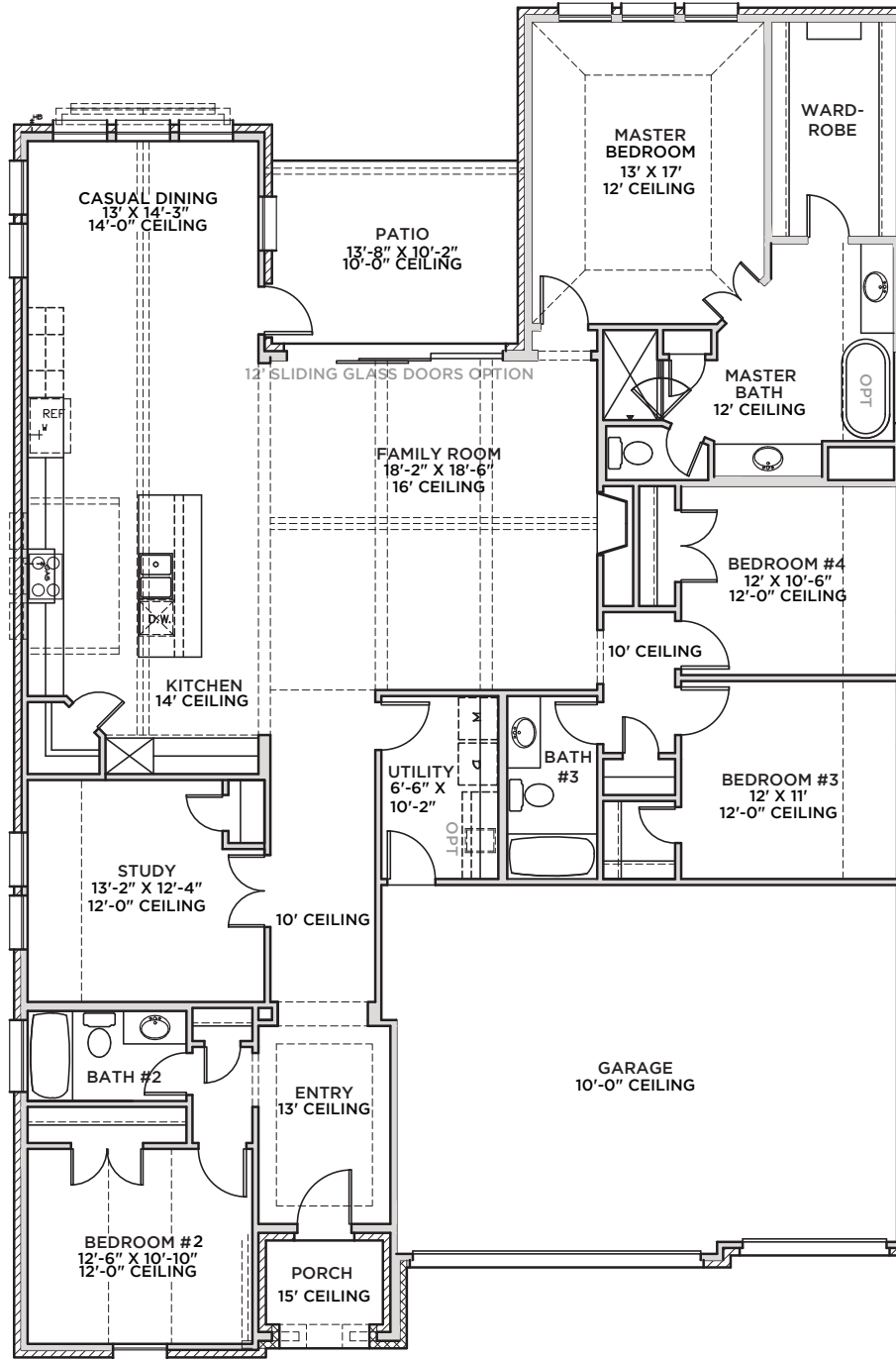
All Product including Architectural Designs, ©2000-2026, Shaddock Homes, LTD., All rights reserved. There may be existing or future design changes made in the floorplans, building products, methods, square footage, or designs used in our homes that are not reflected in our information, sales center or in our models. The materials, designs, square footages, features, and amenities shown are based upon current development plans, which are subject to change without notice. No guarantee is made that the designs, square footages, materials, features, and amenities depicted by artist's renderings or otherwise described will be built, or if built, will be of the same type, size or nature as depicted or described. All stone elevations, metal roofs, cast stone door and window headers and solid sawn cedar posts are optional, but available via change order. Front doors will match the specification sheet or chosen door upgrade. Prices and terms subject to change without notice. REVISION DATE: 10.24.2019



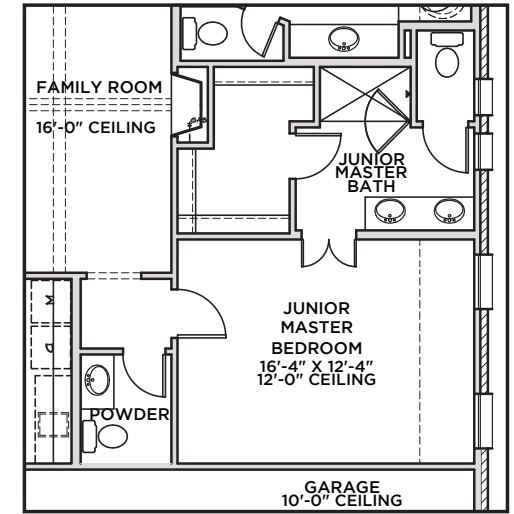
ALTERNATE KITCHEN LAYOUT OPTION



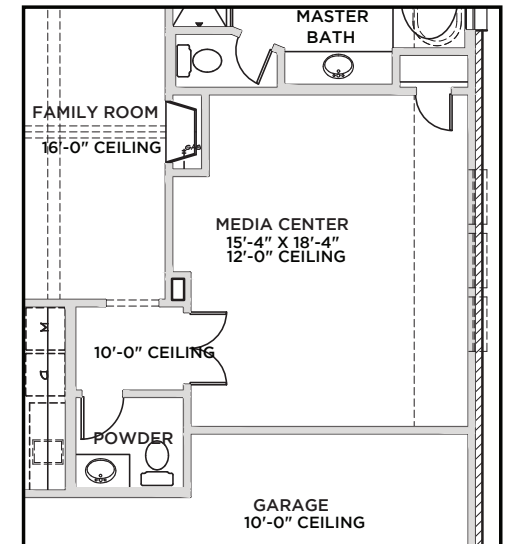
BEDROOM 5
IN LIEU OF STUDY OPTION



FIRST FLOOR



JR. MASTER OPTION



MEDIA OPTION
IN LIEU OF BED 3 & 4
BATH 3 BECOMES A POWDER

PITTSBURGH
5410 (10.24.19)

First Floor	S.FT
Total Living Area	2586
2 Car Garage/Storage	607
Covered Patio	139
Covered Porch	46
Total Area	3378

SHADDOCK HOMES