

Oasis by CrestWood COMMUNITIES



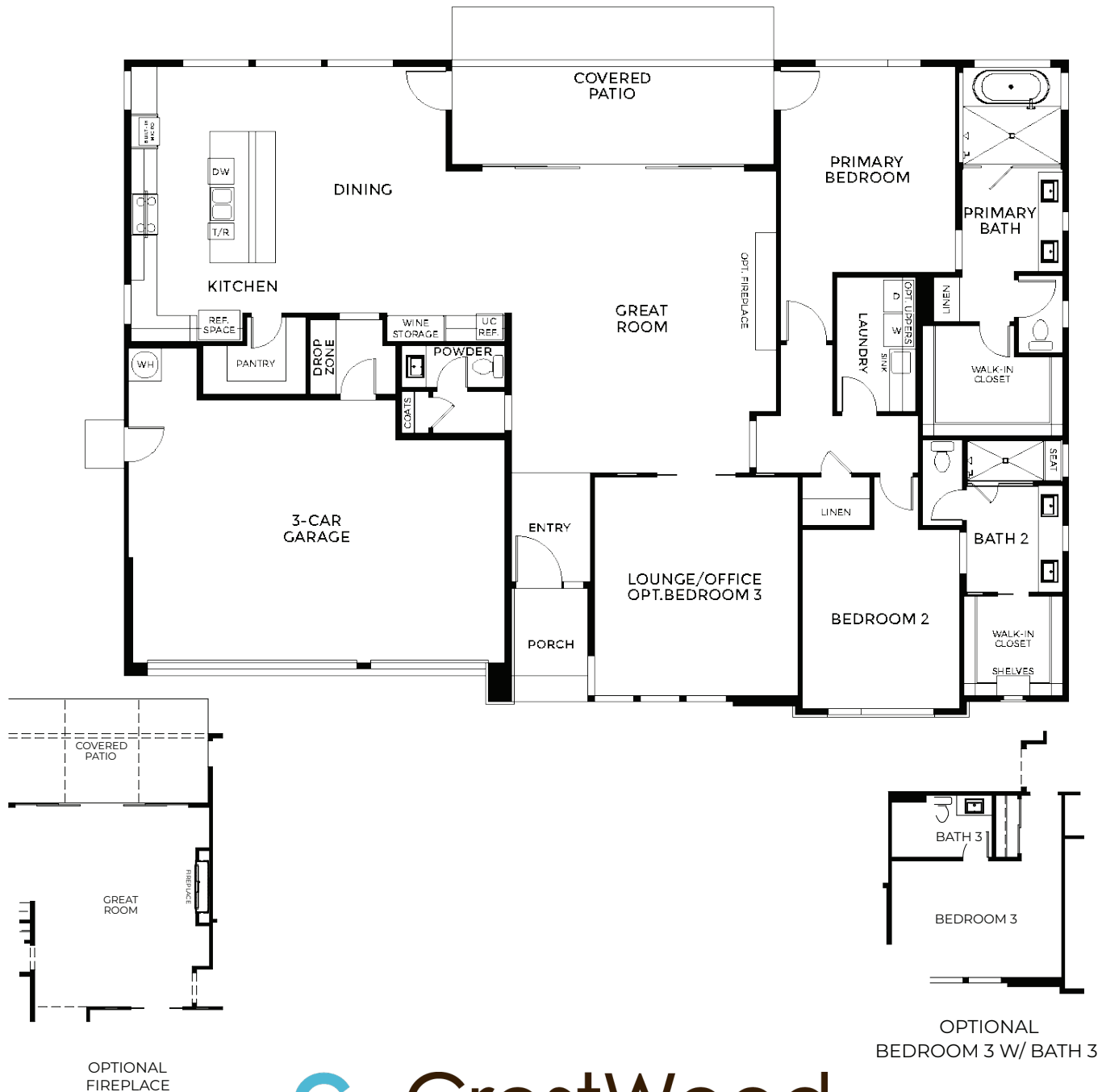
VILLA TWO

Four Generations
OF OUR FAMILY BUILDING HOMES FOR YOUR FAMILY

VILLA TWO

2,626 SQ.FT. | 2 BEDROOMS | 2.5 BATHROOMS | LOUNGE

COVERED PATIO | POOL & SPA | 3 CAR GARAGE



www.CrestWoodCommunities.com

In a continuous effort to improve its products, the seller reserves the right at its sole discretion to make changes or modifications to maps, plans, specifications, materials, features, options, amenities, and colors without notice. All maps, plans, landscaping, and elevation renderings are artist's conceptions and are not to scale. The square footage and dimensions shown are only estimates, and actual square footage and dimensions will differ. Prices and availability are subject to change without notice. Equal Housing Opportunity. Sales by Citrus Edge Realty DRE# 01525938.

Updated 7.29.25