

# THE MEADOW



Elevation A



**Norfolk**  
H O M E S

Building Dreams, One Home At A Time  
[www.norfolk-homes.com](http://www.norfolk-homes.com)



# THE MEADOW



Elevation B



**Norfolk**  
H O M E S

Building Dreams, One Home At A Time  
[www.norfolk-homes.com](http://www.norfolk-homes.com)



# THE MEADOW



Elevation C

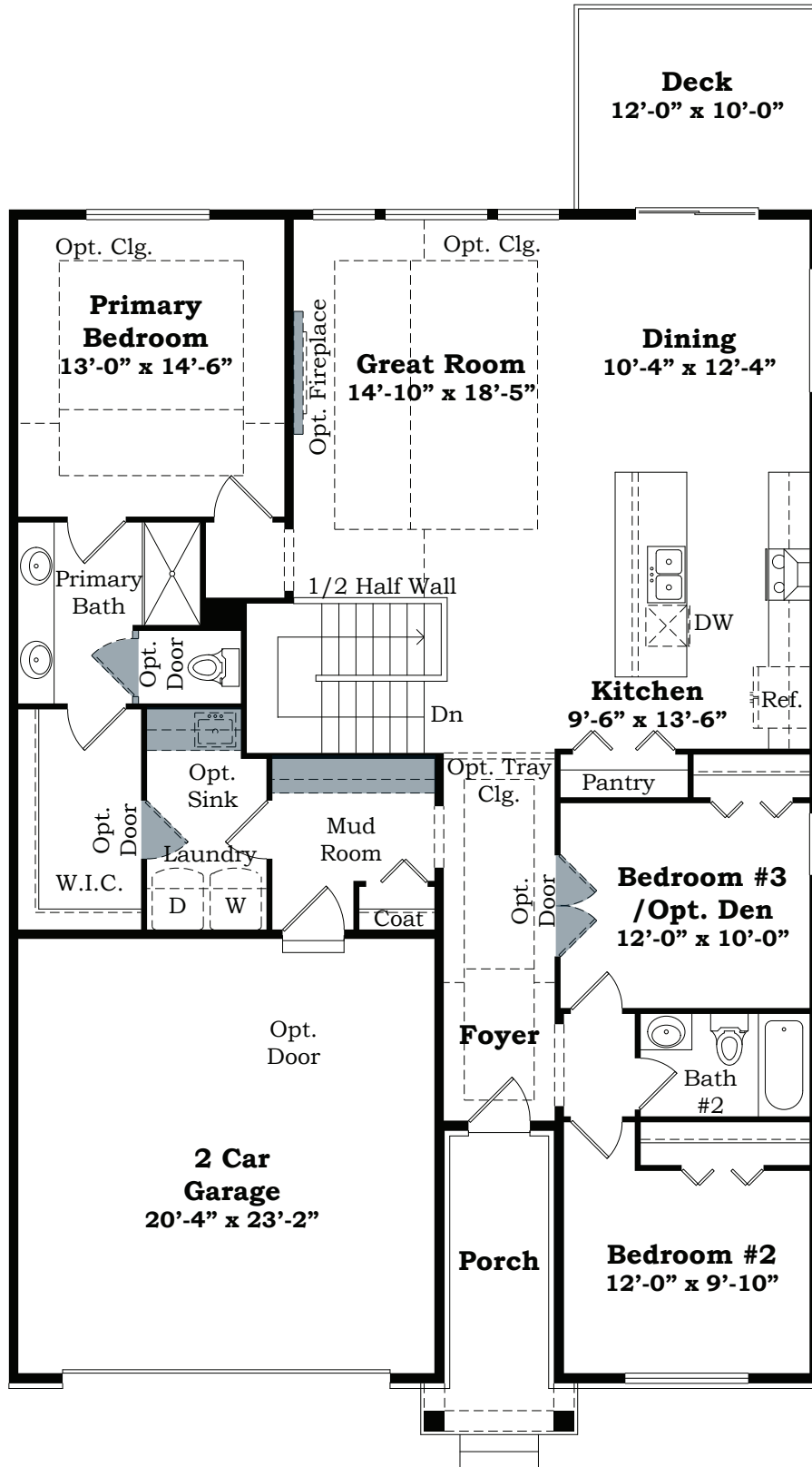


**Norfolk**  
H O M E S

Building Dreams, One Home At A Time  
[www.norfolk-homes.com](http://www.norfolk-homes.com)



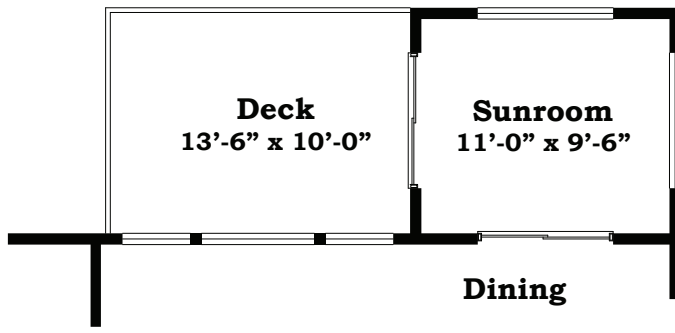
Approximate Sq.Ft. 1,869, 3 Bedrooms, 2 Baths,  
2 Car Garage



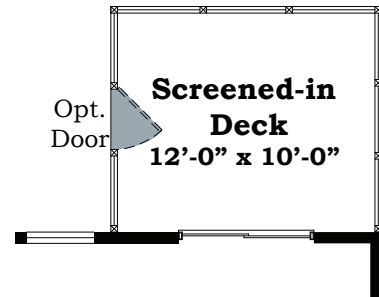
## First Floor



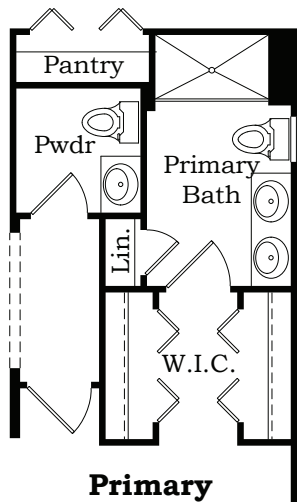
Approximate Sq.Ft. 1,869, 3 Bedrooms, 2 Baths,  
2 Car Garage



Opt. Sunroom  
With Deck

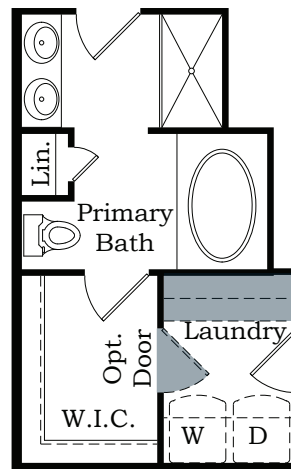


Opt. Screened in Deck



**Primary Bedroom**

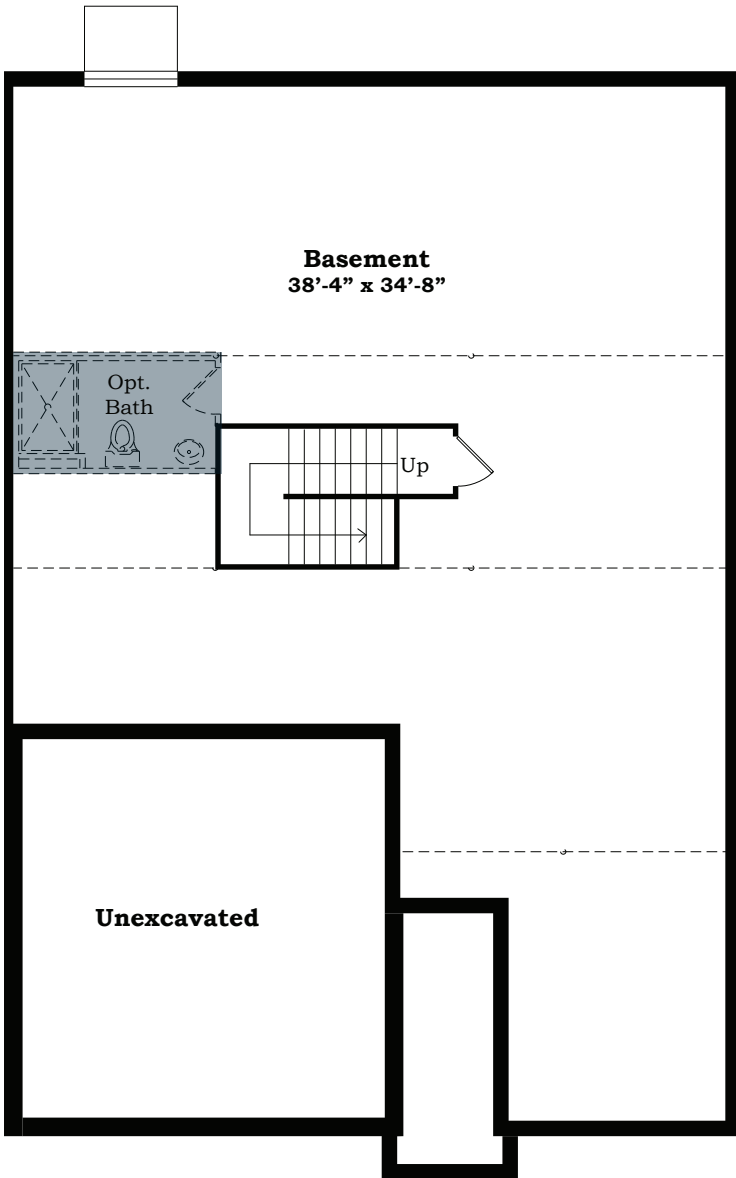
Opt. Added  
Primary  
Bath



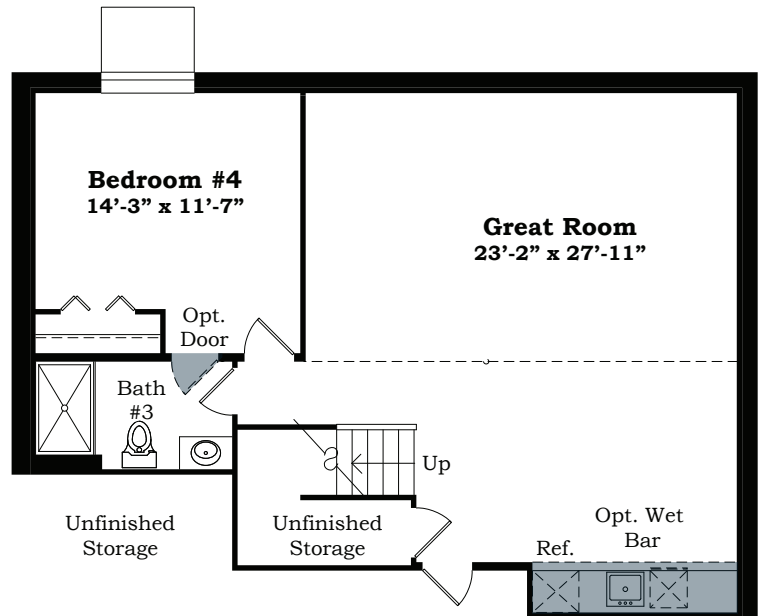
Opt. Primary  
Bath



Approximate Sq.Ft. 1,869, 3 Bedrooms, 2 Baths,  
2 Car Garage



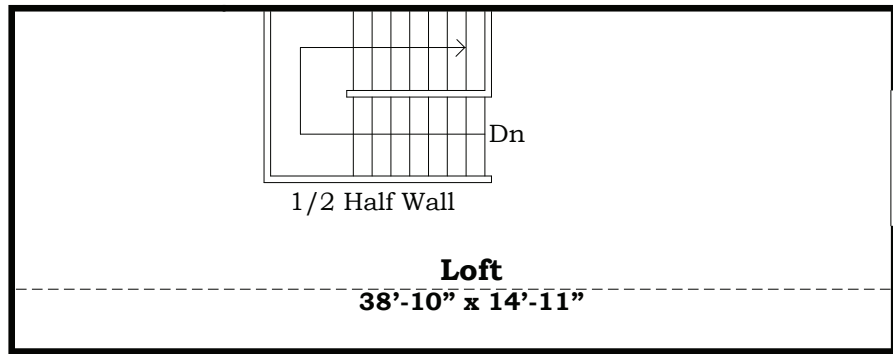
Unfinished Basement



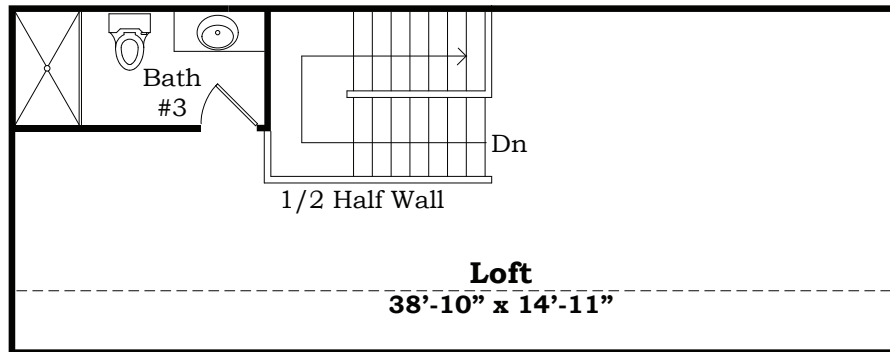
Finished Basement



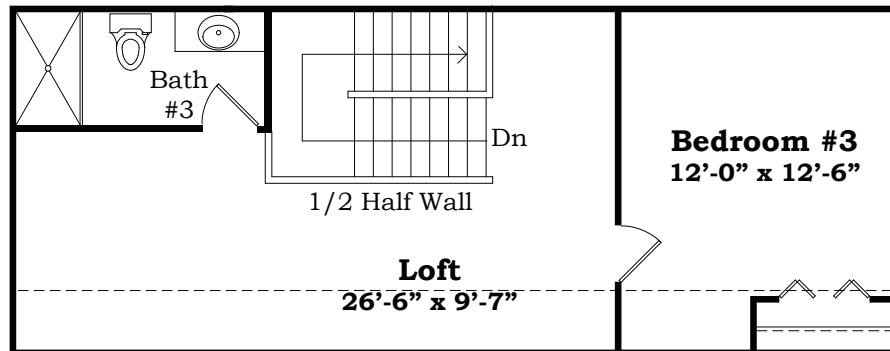
Approximate Sq.Ft. 1,869, 3 Bedrooms, 2 Baths,  
2 Car Garage



Loft



Loft With Bath

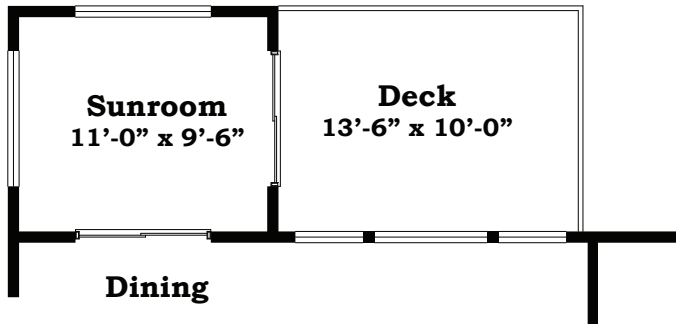


Loft With Bedroom

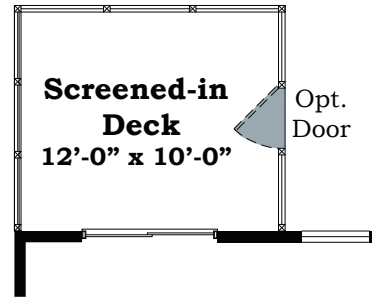




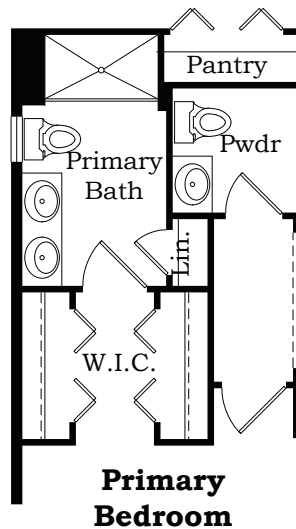
Approximate Sq.Ft. 1,869, 3 Bedrooms, 2 Baths,  
2 Car Garage



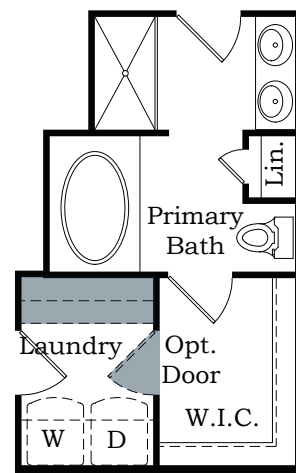
Opt. Sunroom  
With Deck



Opt. Screened in Deck



Opt. Added  
Primary  
Bath

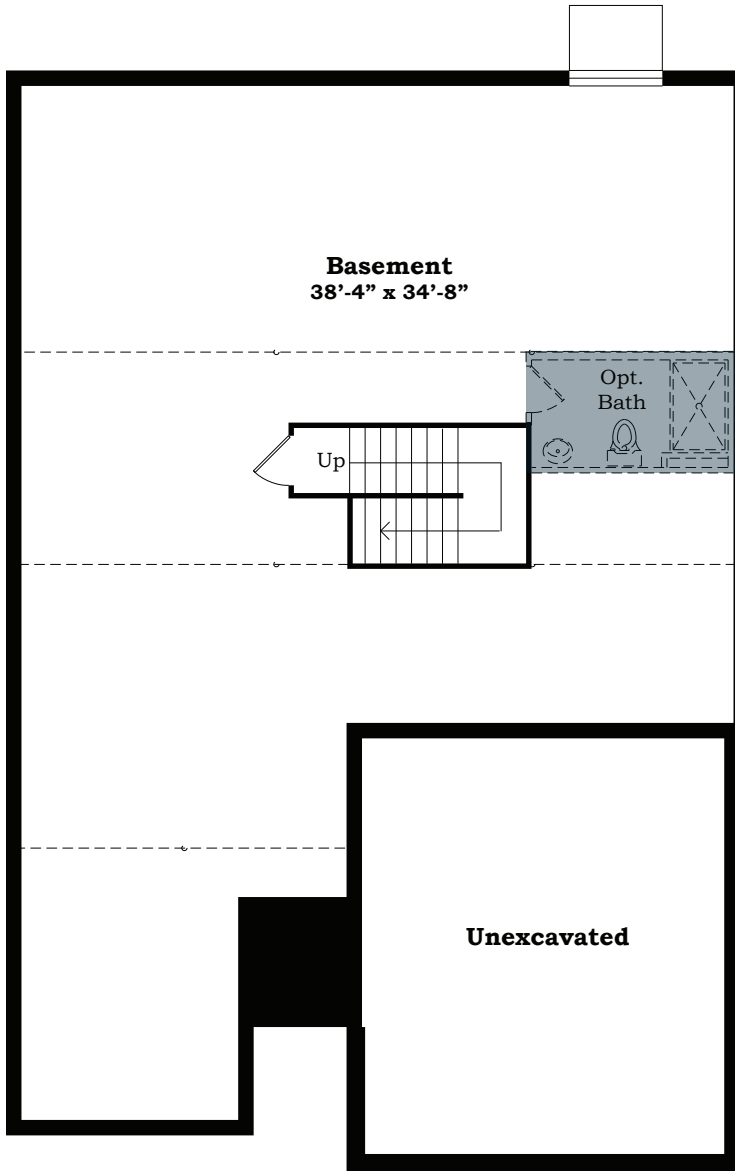


Opt. Primary  
Bath

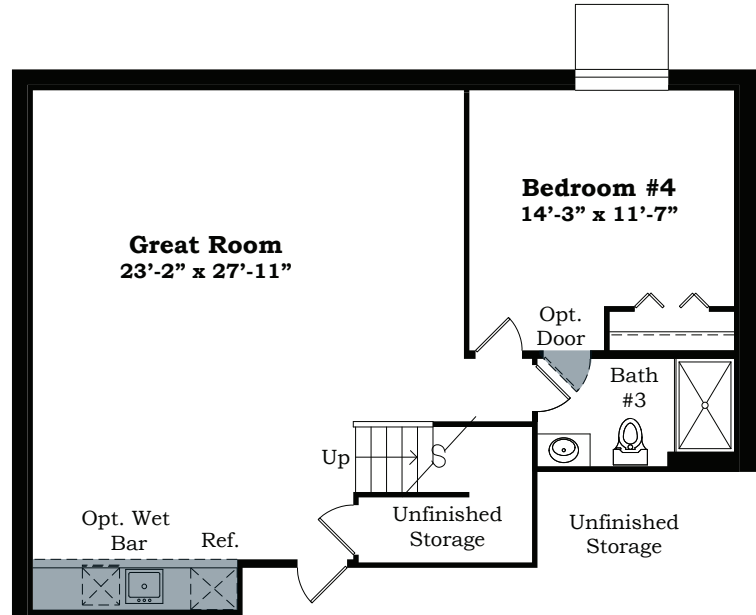


# THE MEADOW (LEFT UNIT)

Approximate Sq.Ft. 1,869, 3 Bedrooms, 2 Baths,  
2 Car Garage



Unfinished Basement



Finished Basement

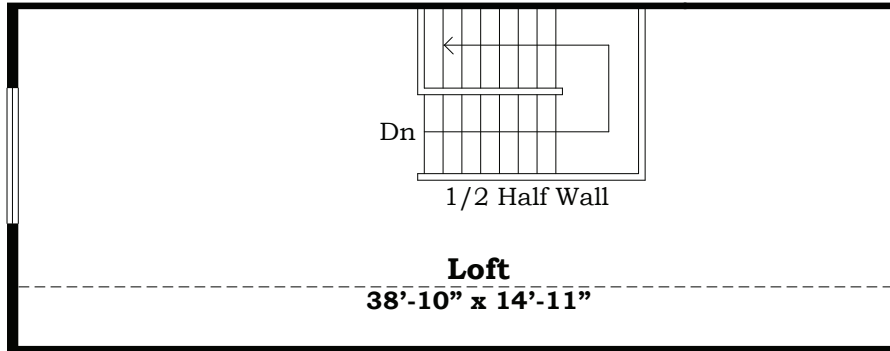


Norfolk  
H O M E S  
www.norfolk-homes.com

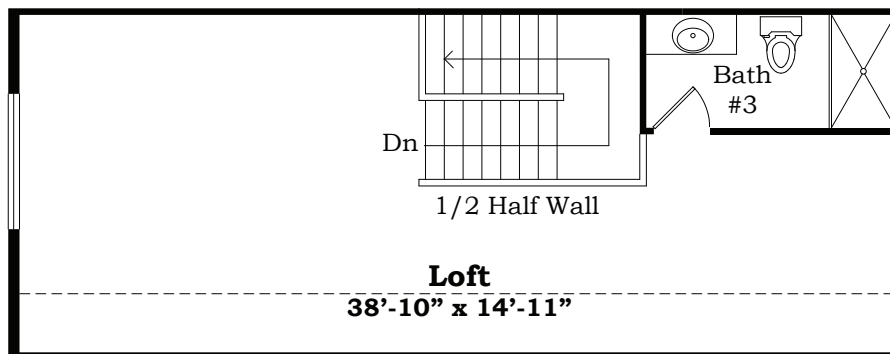
Renderings and floor plans are artist's conception. Room dimensions and square footage are approximate and may vary with construction. Landscaping shown is not included. The right is reserved to make changes without notice or obligation. Windows, doors and ceilings may vary based on options and elevations selected. Not all homes can be built on all home sites. Optional items are available at additional cost. The brochure is for illustrative purposes only and not part of a legal contract. Please see sales consultant for further details. © Norfolk Homes 2026.



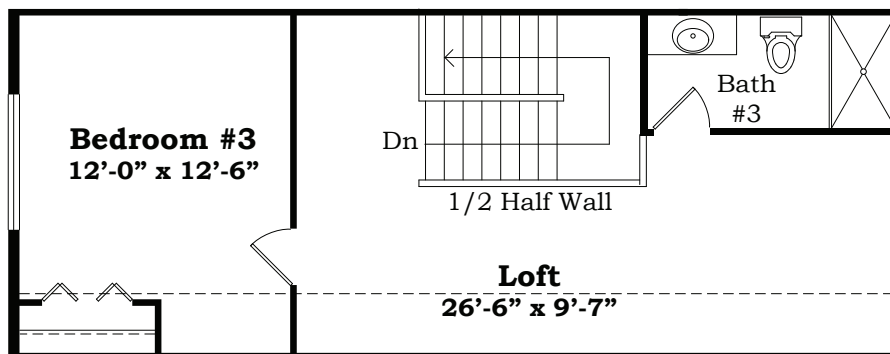
Approximate Sq.Ft. 1,869, 3 Bedrooms, 2 Baths,  
2 Car Garage



Loft



Loft With Bath



Loft With Bedroom

