



Discover

# HERITAGE CREEK

---

NEW  
SINGLE FAMILY HOMES

NASHVILLE, TN



A  COMPANY





# COMMUNITY VIDEO



CLICK TO VIEW VIDEO ON YOUTUBE!

**HC** HERITAGE CREEK



# DISCOVER

## Heritage Creek

---

Welcome home to Heritage Creek! This lovely new community offers that neighborhood feeling, with gorgeous Craftsman-style single-family homes nestled within the wooded landscape of suburban Nashville. There's plenty of family fun nearby too! Enjoy picnics on the lake at Cedar Hill Park less than 5 minutes away. Let your lunch settle and then have fun with the kids on the playground or explore the park's eight mountain biking trails. Disc golf enthusiasts will have a blast on the 21-hole course. Plus, you're only 10-15 minutes away from top-notch shopping, dining and entertainment at the Opry Mills Mall, Rivergate Mall, East Nashville local shops, and of course all that Nashville has to offer downtown.





# COMMUNITY FEATURES



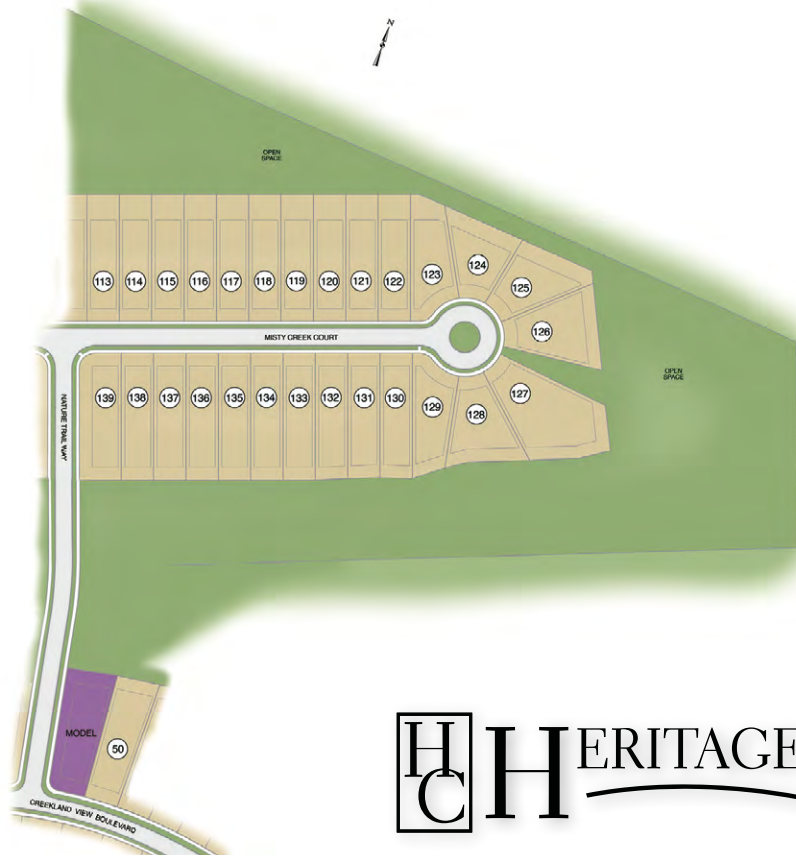
# AREA MAP





# HOMESITE MAP

\*Masterplan Concept is subject to change based on single phase recorded plats.





**HC** HERITAGE CREEK

## FLOORPLAN DETAILS

\*New home prices, included features, and available locations are subject to change without notice. Stated dimensions and square footage are approximate. Artist renderings are concept only. Photos and videos may be of model homes.

### SINGLE FAMILY HOMES

 **3-6 BR**     **2-4 BA**

 **1,765 to 2,846** SQ FT

 **From the Upper \$400s**



**NOW SELLING NEW HOMES!**



Craftsman 1

# The Heartland



Craftsman 2



Traditional 1



Homestead

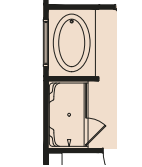
AT HERITAGE CREEK

1,765-2,220 SQ FT

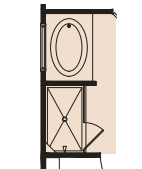
3 BR

2 BA

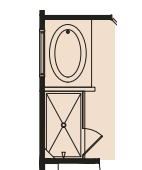
## OWNER'S BATH OPTIONS



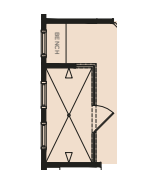
SEPARATE TUB & SHOWER



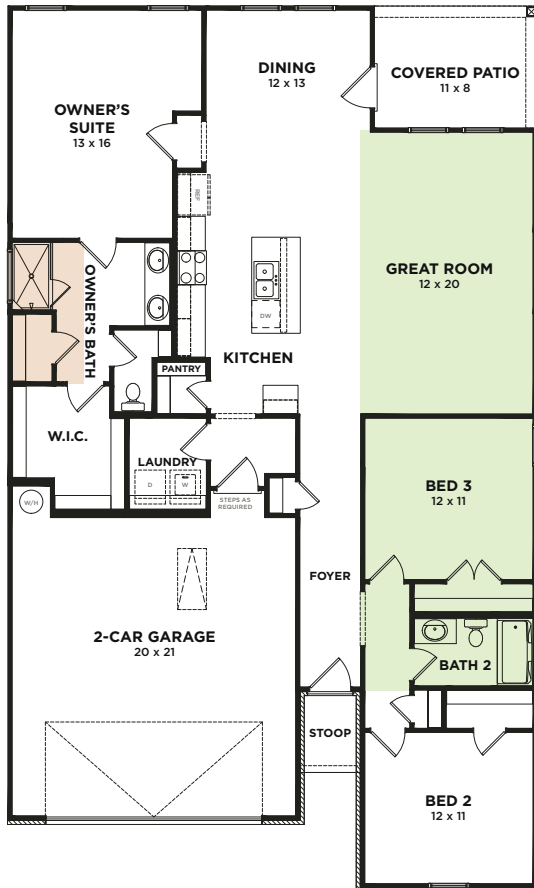
SEPARATE TUB & TILE SHOWER



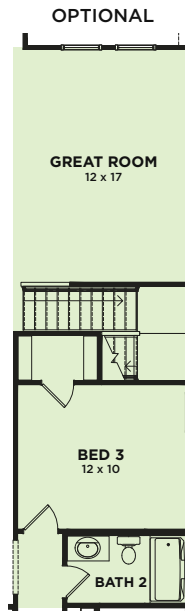
SEPARATE TUB & TILE SHOWER w/ HALF-WALL



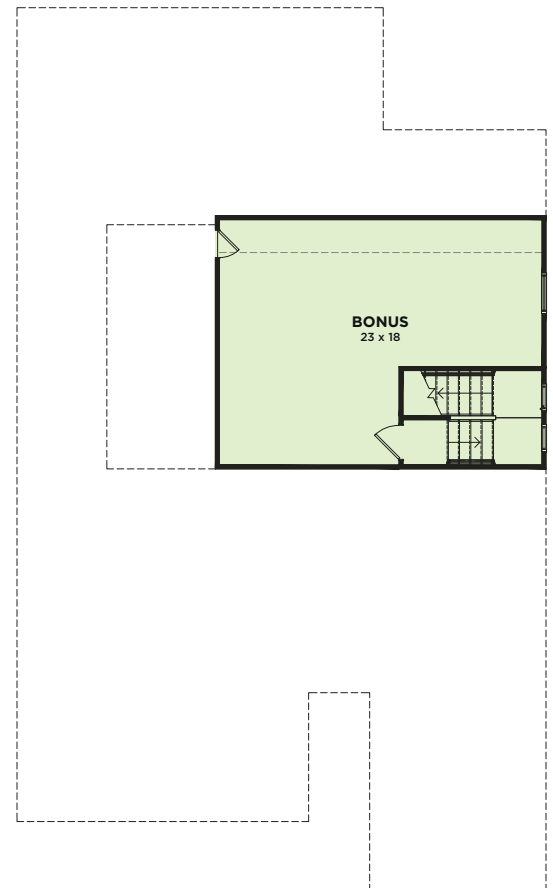
OVERSIZED TILE SHOWER



First Floor



STAIRS TO OPTIONAL SECOND FLOOR



Optional Second Floor

Artist renderings are concept only. Photos and videos may be of model homes. New home prices, included features, and available locations are subject to change without notice. Elevation floor plans and options vary by community, Traditional Elevation shown above. All dimensions are approximate & rounded down to the nearest whole number for marketing content. See a New Home Consultant for more exact room dimensions and home details.





Elevation A



+ 4 More Elevations! View on Our Website!



Elevation B



Elevation C



Elevation E



Elevation H

AT HERITAGE CREEK

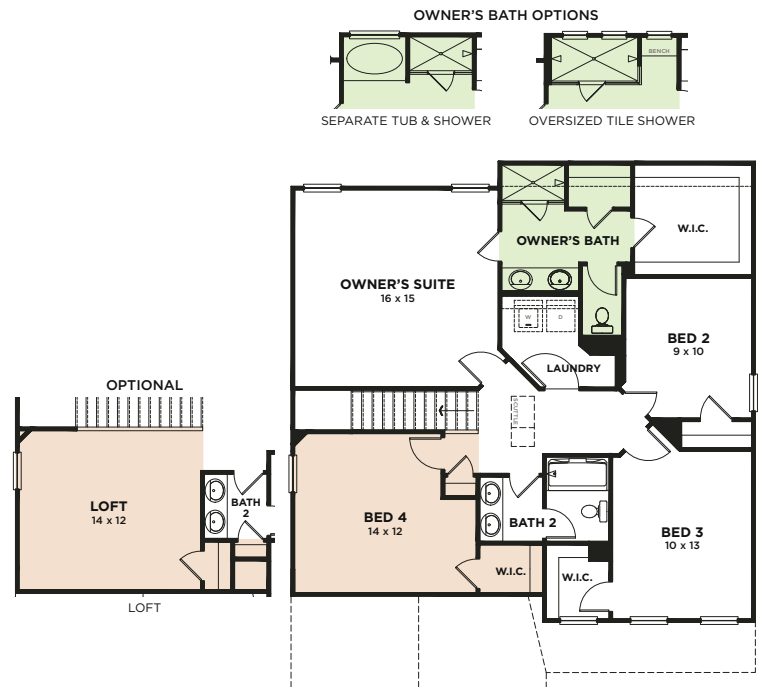
2,269 SQ FT

3-5 BR

2.5-3 BA



First Floor



Second Floor

Artist renderings are concept only. Photos and videos may be of model homes. New home prices, included features, and available locations are subject to change without notice. Elevation floor plans and options vary by community, Traditional Elevation shown above. All dimensions are approximate & rounded down to the nearest whole number for marketing content. See a New Home Consultant for more exact room dimensions and home details.



Craftsman 1

# The Sutherland



Craftsman 2



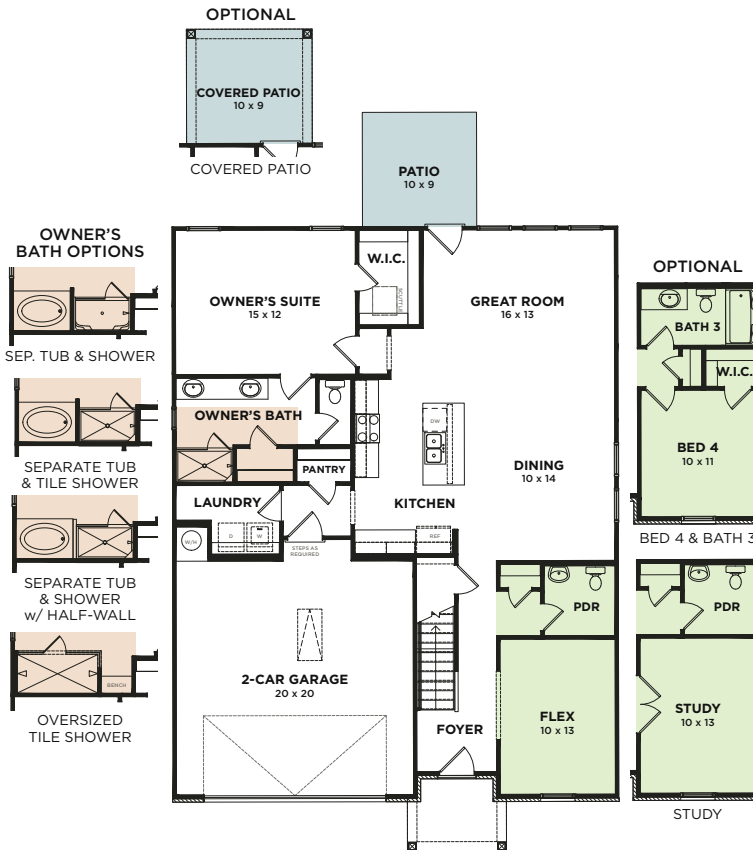
Traditional 1



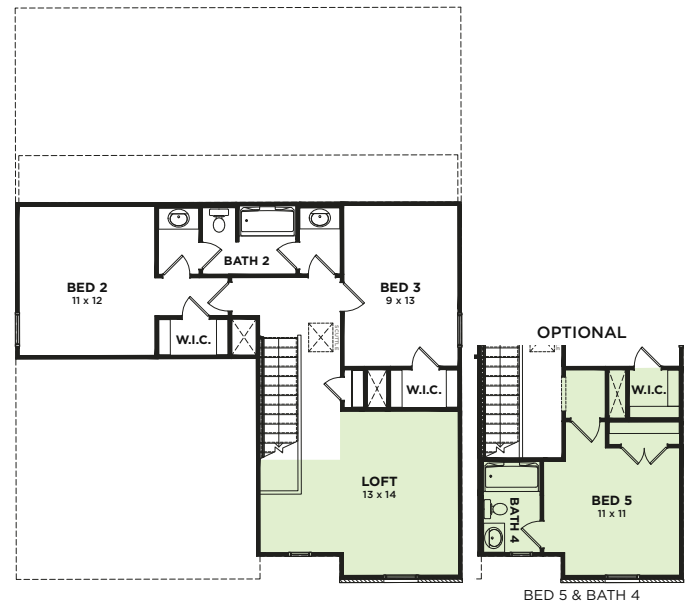
Homestead

AT HERITAGE CREEK

2,344 SQ FT 3-5 BR 2.5-4 BA



First Floor



Second Floor

Artist renderings are concept only. Photos and videos may be of model homes. New home prices, included features, and available locations are subject to change without notice. Elevation floor plans and options vary by community. Traditional Elevation shown above. All dimensions are approximate & rounded down to the nearest whole number for marketing content. See a New Home Consultant for more exact room dimensions and home details.





Elevation A



+ 2 More Elevations! View on Our Website!



Elevation C



Elevation D



Elevation E



Elevation H

AT HERITAGE CREEK

2,584 SQ FT 3-5 BR 2.5-4 BA



First Floor



Second Floor

Artist renderings are concept only. Photos and videos may be of model homes. New home prices, included features, and available locations are subject to change without notice. Elevation floor plans and options vary by community. Traditional Elevation shown above. All dimensions are approximate & rounded down to the nearest whole number for marketing content. See a New Home Consultant for more exact room dimensions and home details.



Elevation S

+ 8 More Elevations! View on Our Website!

# The Colburn



Elevation J



Elevation M



Elevation Q



Elevation R



AT HERITAGE CREEK

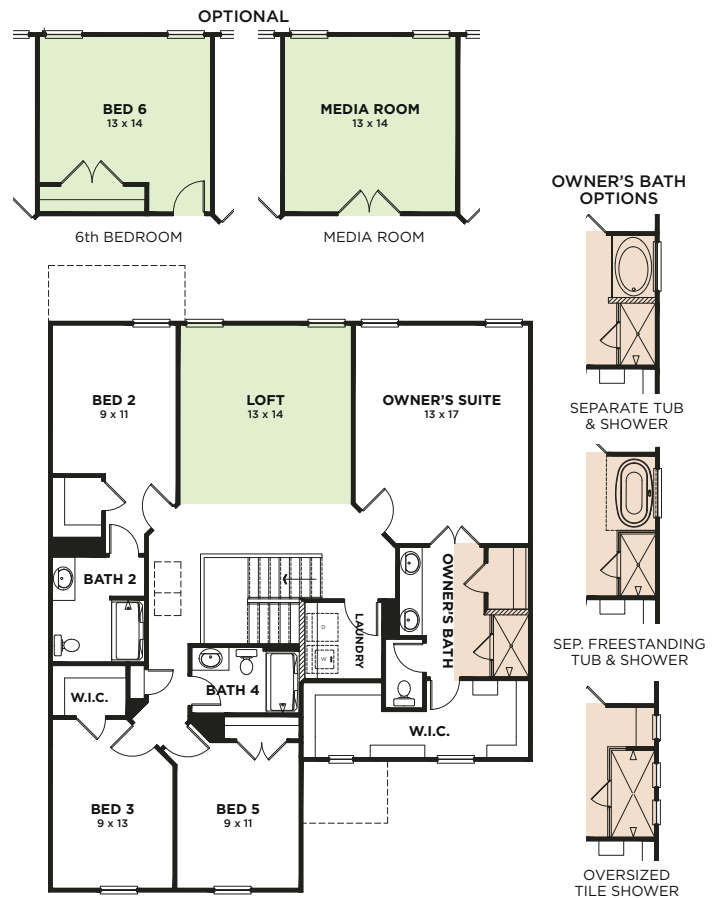
 2,846 SQ FT

 5-6 BR

 4 BA



First Floor



Second Floor

Artist renderings are concept only. Photos and videos may be of model homes. New home prices, included features, and available locations are subject to change without notice. Elevation floor plans and options vary by community. Traditional Elevation shown above. All dimensions are approximate & rounded down to the nearest whole number for marketing content. See a New Home Consultant for more exact room dimensions and home details.



# ABOUT US

## Discover the Difference with a Hometown Builder

---

Founder, Bob Goodall, Jr., established Goodall Homes. Using the homebuilding knowledge he learned from his father, he set out to develop a unique style of homes and communities he hadn't seen being used yet in this area. While Goodall Homes began in 1983, we adapt to the times and different lifestyles around us. We have withstood the test of time and continue to grow!

We continue to thrive by sticking to our 6 Core Values: Glorify God by doing the right thing. Treat others like we want to be treated. Be humble. Relentlessly pursue improvement. Teach every team member to be a business owner. Build a positive team and family atmosphere.

By living by these core values, we get to achieve our company's purpose every day: To create opportunities to improve the lives of our team members, business partners, and customers.

Throughout Nashville, Knoxville, and Southern Kentucky, Goodall Homes designs and builds single-family homes, townhomes, courtyard cottages, and villas — because we realize that “home” has its own meaning to you..... it's a 'lifestyle'. No matter what we build and where, every home that bears the Goodall name carries our pride in craftsmanship, meticulous attention to detail, and personal commitment to our homeowners.





# Mortgages. SIMPLIFIED.™



# FINANCING

## Goodall Homes and Silverton Mortgage are making Mortgages. Simplified.

Buying a home can be overwhelming. There are so many financing options, offered by so many different banks, lenders, and brokers. Don't stress yourself out trying to find the perfect product and perfect rate on your own – Our partner, Silverton Mortgage, can help guide you in the right direction.

## Financing Your Home

We're proud to partner with Silverton Mortgage, a leader in the home lending industry since its founding in 1998. Silverton Mortgage has been continually recognized for having some of the best customer satisfaction ratings in the mortgage community. Strong customer relationships are the foundation of Silverton's business. As Goodall's in-house lender, Silverton Mortgage is able to streamline communication to help borrowers smoothly navigate every stage of the mortgage process, all the way from application to closing. With Goodall Homes and Silverton Mortgage, you have a unified team working with one simple goal: to get you into the home of your dreams.

## Special Interest Rate Incentives

Silverton Mortgage and Goodall Homes partner to offer Special Incentives and Low-Interest Rate\* Options on select homes to well qualified customers. Check out our special incentives on our website or contact us TODAY!

\*Rates are not guaranteed and may vary depending on loan program, loan terms, daily rates, credit history and time of application. Other factor may apply.  
All trademarks are property of their respective owners.

**ALL LOANS ARE SUBJECT TO CREDIT APPROVAL**

Vanderbilt Mortgage and Finance, Inc., dba Silverton Mortgage, 1201 Peachtree St NE, Ste 2050, Atlanta, GA 30361, 404-815-0291, NMLS #1561, (<http://www.nmlsconsumeraccess.org/>), AZ Lic. #BK-0902616, Licensed by the Department of Financial Protection and Innovation under the California Residential Mortgage Lending Act license, Licensed by the N.J. Department of Banking and Insurance, Licensed by PA Dept. of Banking and Securities, Rhode Island Licensed Lender. Licensing information: <https://silvertonmortgage.com/licensing/>.

[CA Resident Privacy Policy](#) | [Clayton Homes](#) and [Legal and Privacy at Vanderbilt Mortgage and Finance \(vmf.com\)](#) | [Do Not Sell or Share My Personal Information](#)





# THE TEAM



**Cameron Mackintosh**

New Home Consultant

240-357-7236 (Cell)

[cmackintosh@newhomegroupn.com](mailto:cmackintosh@newhomegroupn.com)



**Online Sales Team**

New Home Specialists

615-703-5883

[online@newhomegroupn.com](mailto:online@newhomegroupn.com)



SOLD BY  
**NEW HOME GROUP**  
WELCOME HOME

New Home Group LLC #266481  
Broker #293693



**HC** HERITAGE CREEK



DIRECTIONS

**MODEL HOME**

 **2021 Creekland View Blvd  
Nashville, TN 37207**

**Goodall  
HOMES**

A **Clayton** COMPANY

**GoodallHomes.com**

