

The Savannah



SCAN THE QR CODE
TO LEARN MORE!

6726 Mayland Ridge Lane | Lot 03



4 Beds



3 Baths



2-Car Garage



2,420 sq ft



\$620,493

Features | Move-In Ready

- Quad-Style Home
- First-Floor Primary Suite
- Quartz Countertops
- GE Appliances
- Courtyard



Dark Knight



Charcoal



Triangle River Street

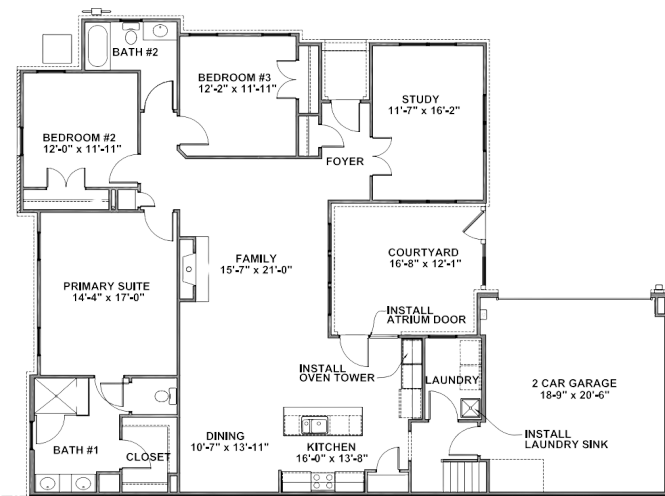


White

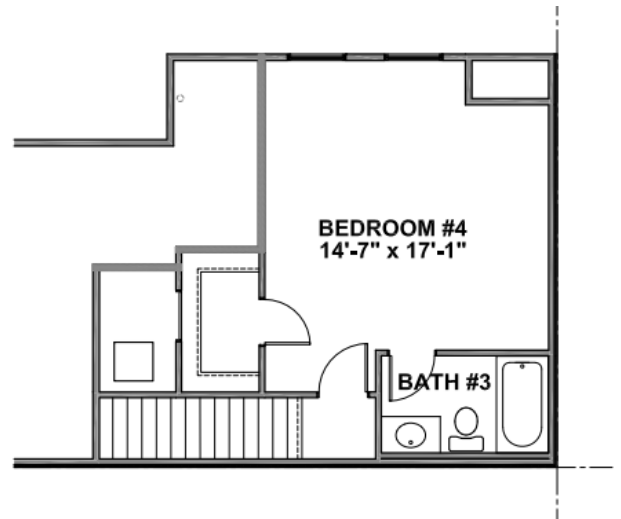


Dove Gray

First Floor



Second Floor



Boone Homes

CONTACT US:

(804) 481-9386



Kitchen



KITCHEN FAUCET:
Kohler Simplice Pull-Down
Matte Black



PENDANTS (X2)



BACKSPLASH
3x12 Flow White

COUNTERTOPS
Pental Luce Oro Quartz

CABINETS

Sinclair
(Perimeter) White
(Island) Arid



**CABINET
HARDWARE**

GE Appliances

Dishwasher, Microwave,
Built-In Gas Cooktop, Wall Oven



Flooring



REVWOOD SELECT
Foyer, Dining Room,
Kitchen/Pantry, Family Room,
First Floor Halls, Mudroom Area
off Garage, Primary Suite/Closet
Color: Fawn Chestnut



CARPET (8 LB PAD)
Bedroom #2/Closet,
Bedroom #3/Closet,
Bedroom #4/Closet,
Stairs/Landing
Color: Cross Country

Lighting

DINING



FOYER



Bathroom #2



**LIGHTING
SHADES DOWN**



PLUMBING
Kohler Simplice Series
Brushed Nickel



FLOOR TILE
Adrock 12x24
Frost Natural

CABINETS

Benton White
Raised Height
Cultured Marble Tops
Large Oval Bowl

Primary Bath

LIGHTING (X2)
SHADES DOWN



PLUMBING
Kohler Simplice
Brushed Nickel



Kohler Awaken
Brushed Nickel

SHOWER WALL TILE

CS81 12x24
Timeless Marble



SHOWER FLOOR

Venetian Gray 2"
Mosaic Matte By
Lungarno



FLOOR TILE
CS81 12x24
Timeless Marble



CABINETS

Benton Quill
Raised Height
Pure White Cultured
Marble Top w/ Large
Oval Bowls