



the FAZIO

3 Bedroom Interior Unit

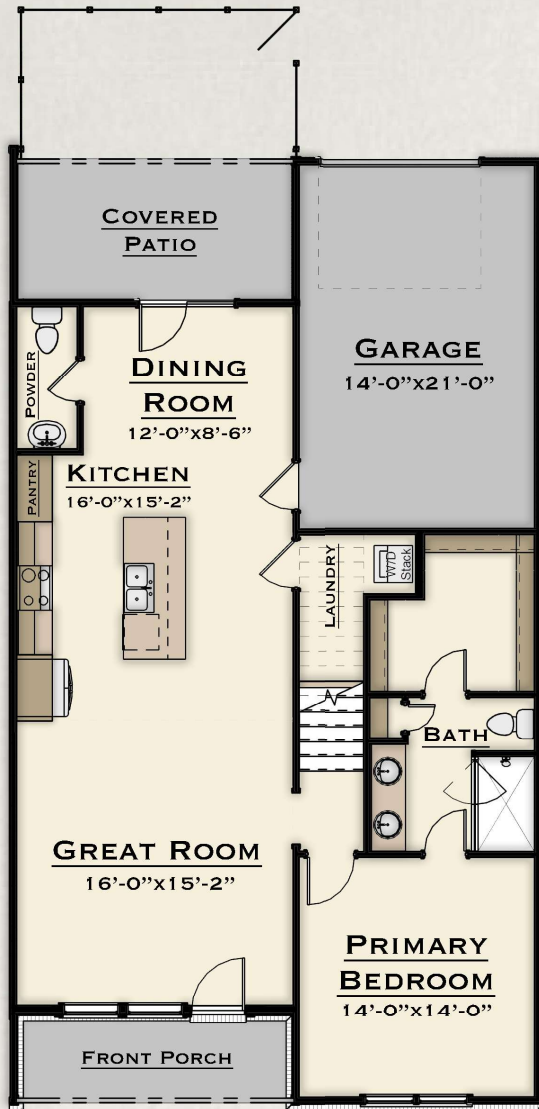
...

*Our homeowners **LOVE** this plan because...*

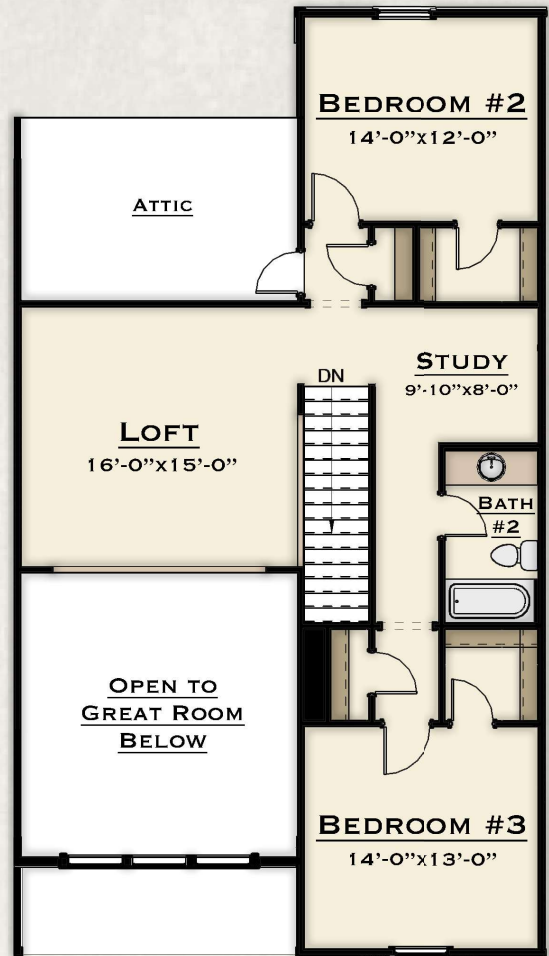
- when you walk in to the home from the front porch, you are greeted by open concept living that leads straight back to the covered patio.
- the primary bedroom opens to the stairs, allowing parents easy access to the second floor of the home.
- upstairs, you'll find a large loft overlooking the great room with a connected study space, two additional bedrooms with spacious walk-in closets and a second bath.



HARRIS DOYLE
HOMES



Main Level



Second Floor

...

Approximate SF: 2,038 SF
(1099/939)

Beds/Baths: 3/2.5

HARRISDOYLE.COM

Keystone

*All renderings are not to scale and are for graphical illustrations and presentation purposes only. Floor plans represent approximate room sizes for furniture placement ideas only and may vary by elevation. All material and colors may vary prior to or during construction, and some features shown may be optional. Plans and their availability are subject to change without notice.