

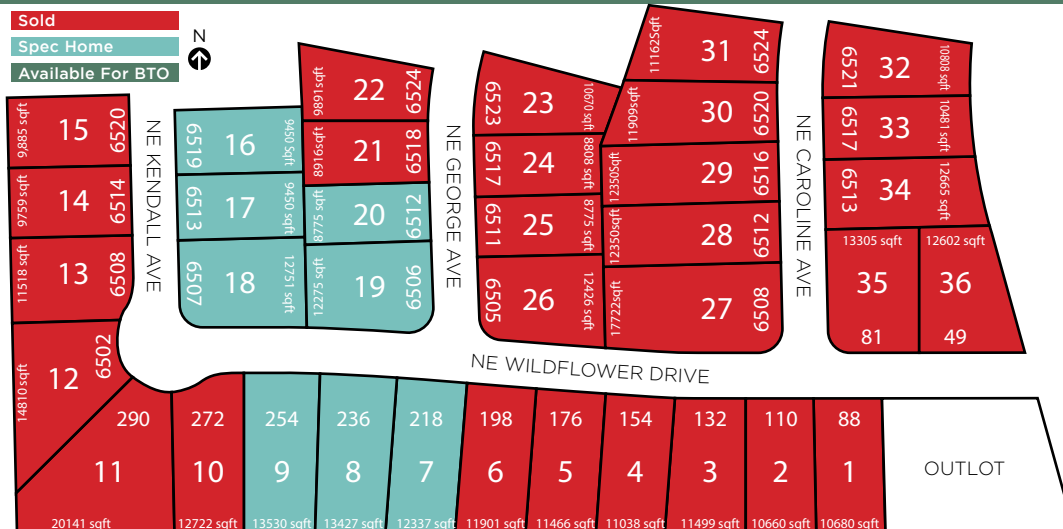


SUNRISE POINTE

PLEASANT HILL

PLAT 6

www.jerryshomes.com



School District
Southeast Polk Community

Nearest Schools
Four Mile Elementary
Spring Creek 6th Grade Center
Southeast Polk Junior High School
Southeast Polk High School

Nearest Grocery
2 miles to Fareway, 4 miles to Hy-Vee, 5 miles to Target
5 miles to Walmart

Nearest Gym
2 miles to Snap Fitness
3 miles to Anytime Fitness
3 miles to Orange Planet

Nearest Shopping Center
7 miles to Outlets of Des Moines, 15 miles to Valley West Mall

Home Improvement Store
5 miles to Lowe's
6 miles to Menards

Tucked away in a quiet little neighborhood in Pleasant Hill, Sunrise Pointe is a hidden gem of a community found just east of the HWY 5 bypass. Off the beaten path, yet just minutes from access to the entire metro area. Excellent South East Polk schools with Four Mile Elementary, a community of neighbors who become friends, small town feel with plenty of amenities including parks, library, trails & local restaurants.

Dianna Elder | 641.780.8804 | dianna@teamelder.com



Listing information subject to change without notice.

#SINCE1957

Our history builds your future.



Daylight lots are an additional \$4,000 above listing price. Walkout lots are an additional \$7,000 above listing price.