



welcome home

BISHARD HOMES

4633 A CORONET


**BISHARD
HOMES**

WHY BISHARD HOMES?

More than 20 years after Bishard Development Corporation was introduced, we continue the tradition that the Bishard brothers began.

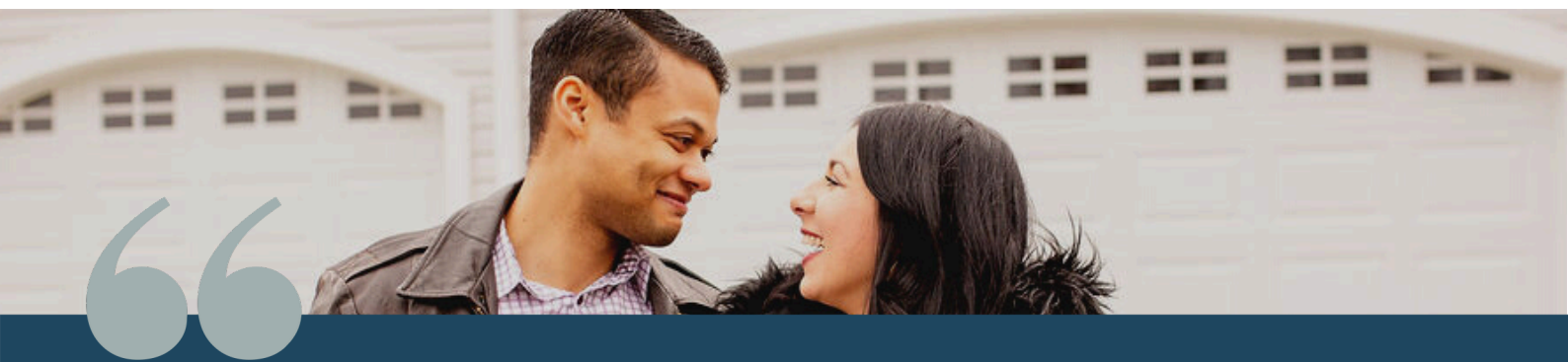
Over the years, the area has changed. Design, materials, and technology have evolved, enabling us to build

homes that “perform”—with smart technology, energy efficiency, and design innovations that increase comfort and convenience.

Still, the desire for the serenity that can only be experienced at the shore remains the same—along with the integrity of the people who make Bishard Homes a success. From your first inquiry through finalizing your choices and following the path to ownership, we will smoothly navigate you through every step.

We listen. We offer ideas. We use our experience to bring your dream to life.

Bishard Homes is not our business. It's our pleasure.



Bishard Homes and Bishard Builders have an outstanding reputation for building quality affordable housing and standing firmly behind the quality construction they construct!

-MICK, VIRGINIA BEACH

The Parker

4633 A CORONET

Welcome to the Parker, a modern 3-level duplex just minutes from the Chesapeake Bay, First Landing State Park, and the restaurants along Shore Drive. The Parker floorplan offers a flexible layout designed for real life, with a first-floor bedroom and a full bath ideal for guests, a home office, or added privacy, plus a one-car garage. The second floor features a bright, open-concept living, dining, and kitchen space with a balcony, creating an easy flow for everyday living and entertaining. Upstairs, the third floor provides two private bedroom suites, including a spacious owner's retreat with a walk-in closet, double vanity, and its own private balcony. With multiple outdoor spaces, a functional layout, and a prime coastal location, this home offers an easy, comfortable way to enjoy life near the water.

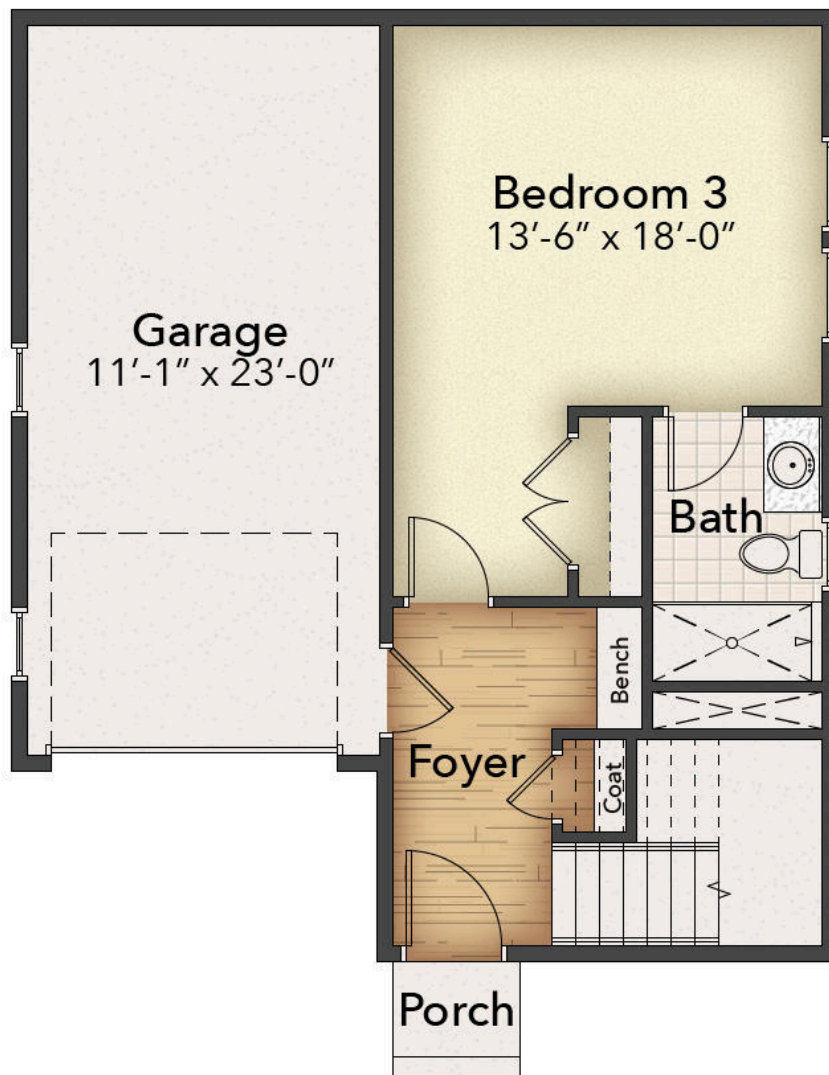



BISHARD HOMES

The Parker

4633 A CORONET

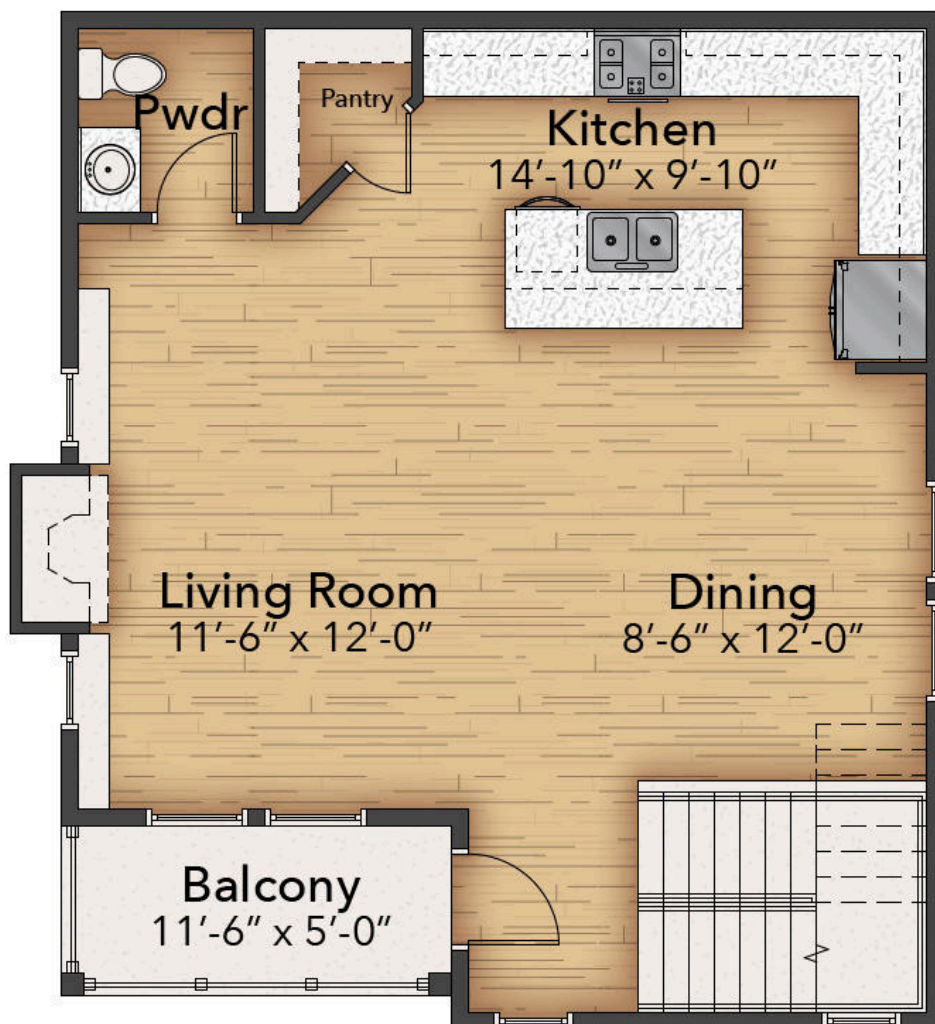
FIRST FLOOR
3 BED | 3.5 BATH | 1,735 SQFT



The Parker

4633 A CORONET

SECOND FLOOR
3 BED | 3.5 BATH | 1,735 SQFT



**BISHARD HOMES**

The Parker

4633 A CORONET

THIRD FLOOR
3 BED | 3.5 BATH | 1,735 SQFT

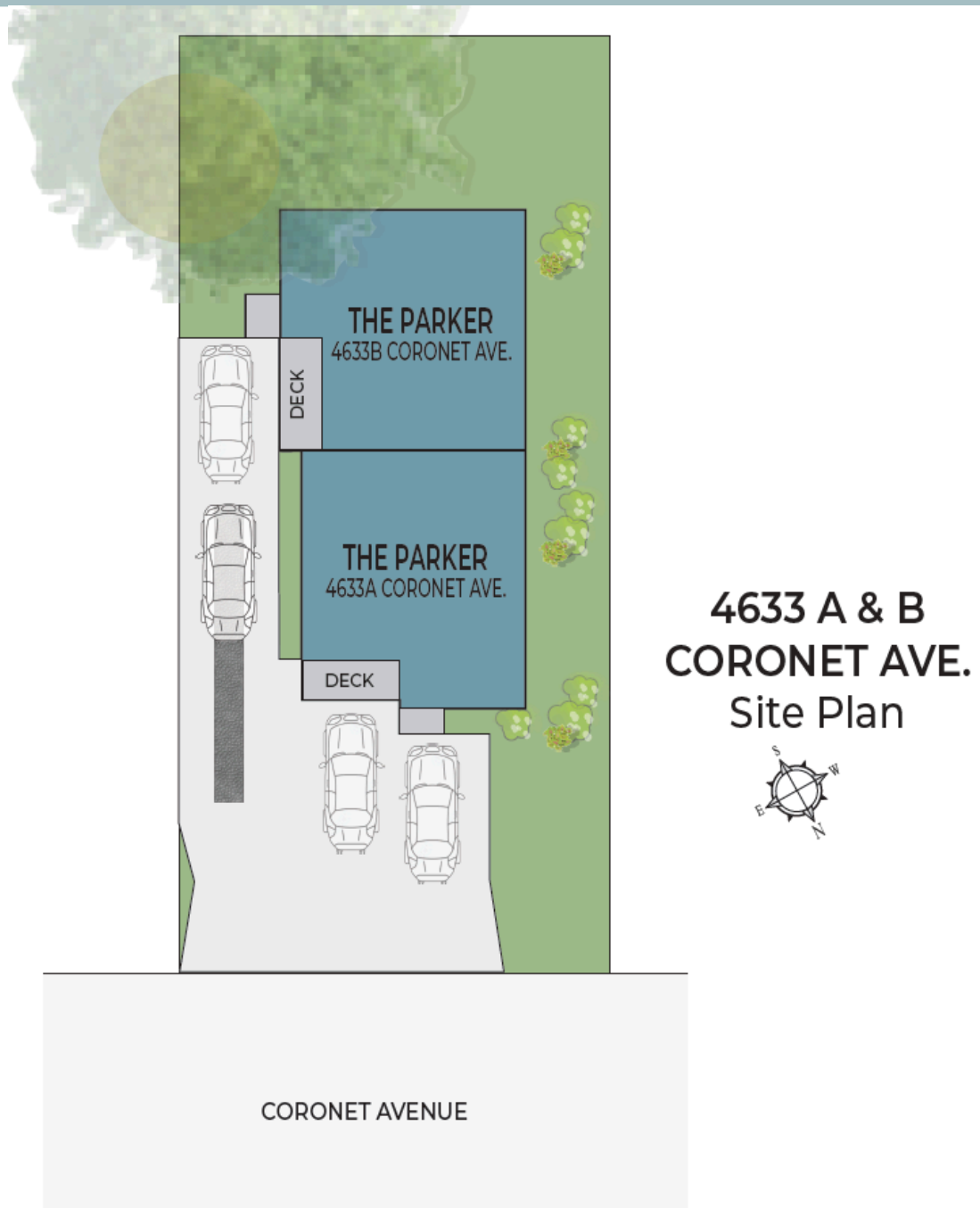


**BISHARD HOMES**

Renderings, floor plans, dimensions, features, and pricing are for illustrative purposes only and are subject to change without notice.

4633 A Coronet Avenue

SITE LAYOUT



**BISHARD HOMES**

4633 A Coronet

STANDARD FEATURES

EXTERIOR

- Beautiful Appointed Exterior Features
- Vinyl Windows Low E Glass with grids
- 30 Year Architectural Shingles
- James Hardie 8.5" Color Plus Lap Siding
- Fiberglass Entry Door
- Brick accents/skirt on front elevation (Per Plan)
- Raised Panel Garage Door
- Designer Brand Lighting Fixture Package
- Hose Bibs – Front and Rear
- GFI Protected Outlets – Front and Rear
- Concrete Walkways
- Landscape Design Including Shrubs & Sod
- Brush Finished Concrete Outdoor Living Patio

INTERIOR

- Interior Floor Plans Designed to Maximize Natural Light
- High Ceilings in Living Area (9' Per Plan)
- Deluxe 42" (Upper) Cabinets
- Maintenance Free Backsplash
- Soft close Dovetail Drawers and Doors
- Quartz Kitchen Countertops w/ Modern Kitchen Sink
- Stainless Steel Appliances
- Free Standing Gas Range & Microwave above
- Shaw Optimum LVP in the Living Area
- Hardwood Oak Treads from 1st- 2nd Floor
- Ceiling Fan in the Living Room
- Gas Fireplace with Mantel and Legs
- Abundant LED Recessed Lighting (Per Plan)
- Smooth Drywall Finish
- Cable Outlets in All Bedrooms and Living Room
- Smart Closet for Whole Home Wi-Fi Connectivity
- Sherwin Williams 2-Toned Paint

OWNER'S SUITE BATH

- Ceramic Tile Floors
- All Tile Shower with Niche
- Quartz Vanity Countertops w/ Custom Mirrors
- Quality Delta Fixtures & Matching Bath Hardware
- Elongated Toilet
- Frameless Glass Shower Door

SECONDARY BATHS

- Pedestal Sink w/ Oval Mirror in Powder Room
- Granite Vanity Tops in Secondary Bathrooms
- Ceramic Tile on Floors
- Maintenance Free Fiberglass Bathtub/ Shower Inserts
- Quality Delta Fixtures & Matching Bath Hardware
- Elongated Toilets

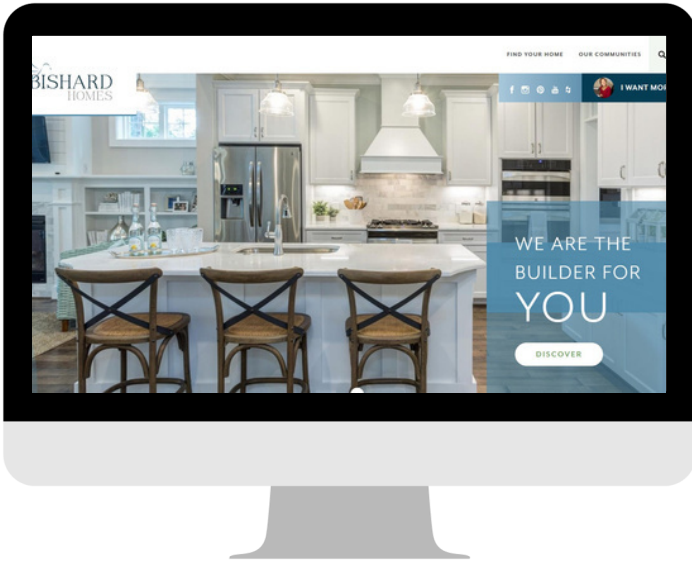
ENERGY EFFICIENCY

- LED Energy Efficient Bulbs Throughout Home
- Energy Star Appliances
- Energy Efficient Gas Furnace w/ 14 SEER A/C
- Programmable Thermostat w/ Smart PhoneConnectivity
- R-49 Attic Insulation, R-15 Exterior Wall Insulation
- Insulated Concrete Slab Foundation
- Spray Foam Insulation on All Penetrations
- TYPAR House Wrap System
- Energy Efficient Tankless Water Heater

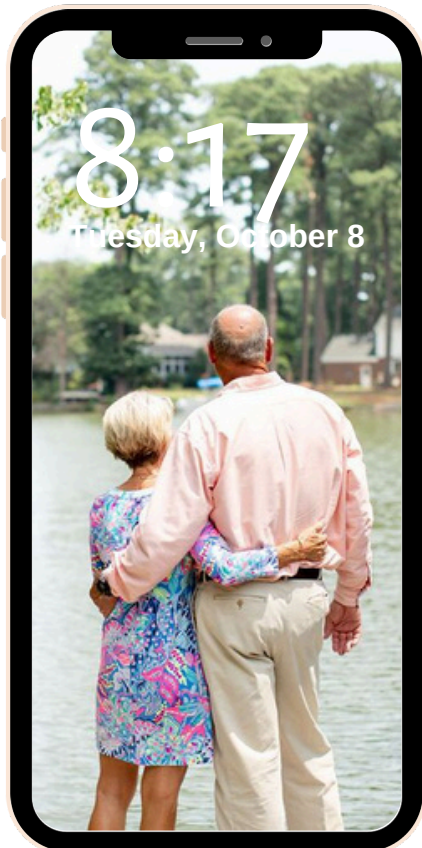
WARRANTY

- 1 Year Material & Workmanship
- 5 Year Structural Warranty

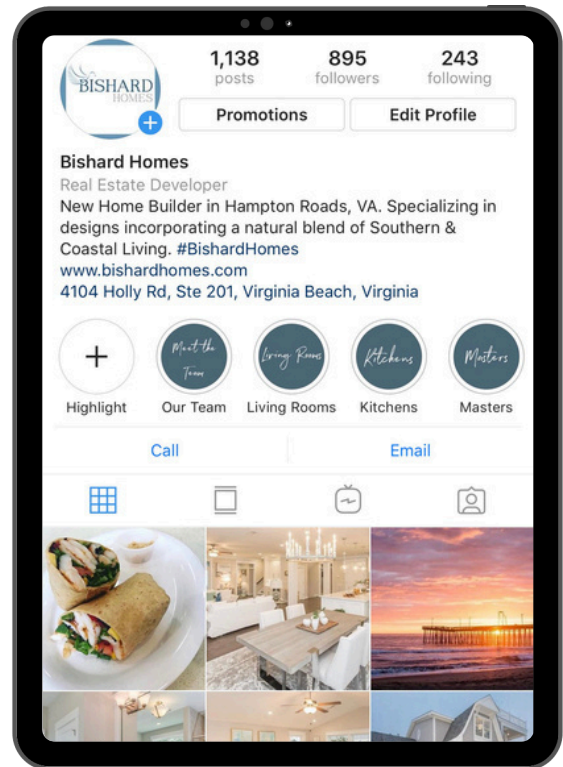
Questions



FIND US ONLINE AT
WWW.BISHARDHOMES.COM



FOLLOW ALONG ON
SOCIAL MEDIA
@BISHARDHOMES



CALL OUR
NEW HOME SPECIALISTS
(757) 703-3367