

Opus II



Craftsman



Modern Farmhouse



Modern Euro



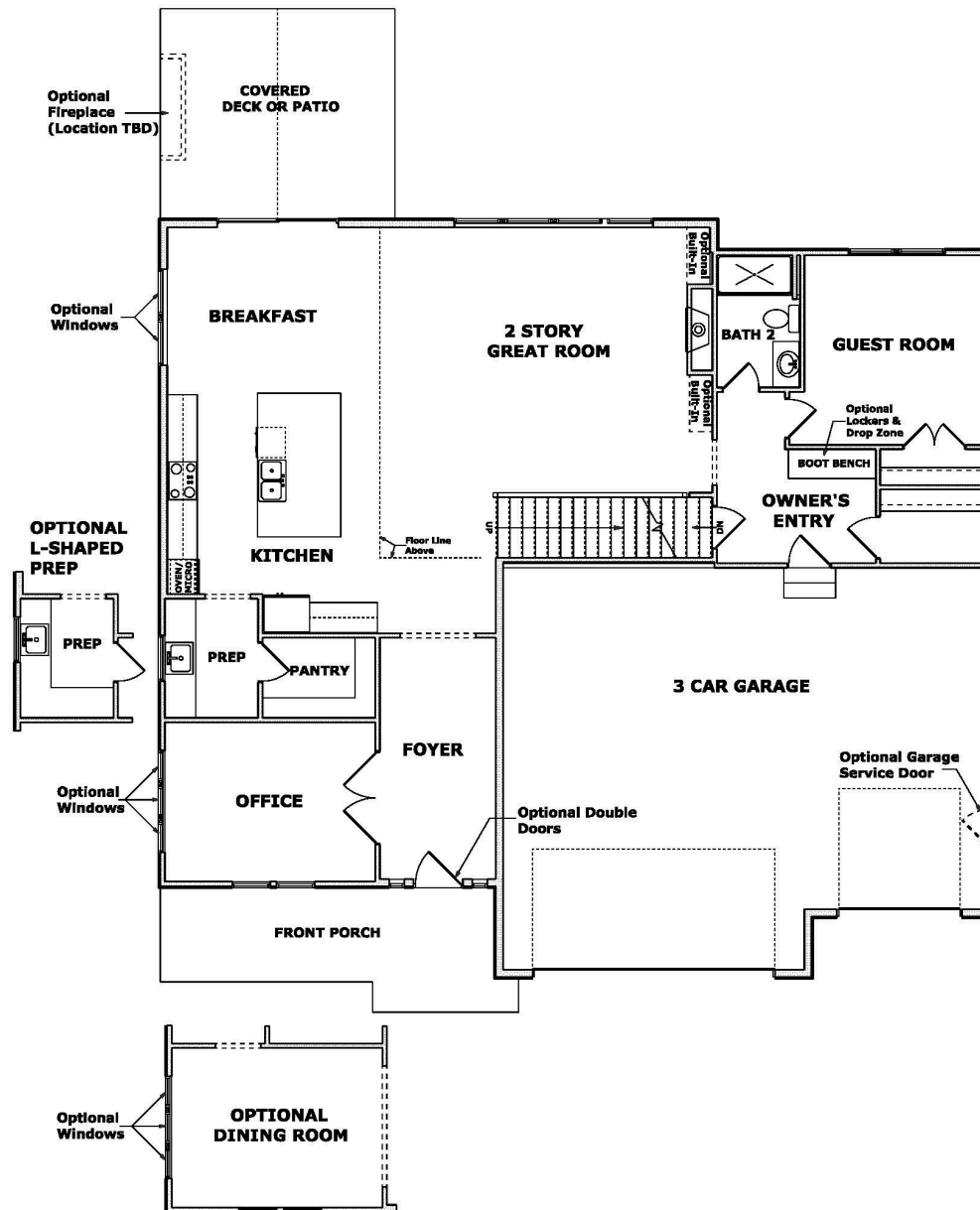
Contemporary



Prairie

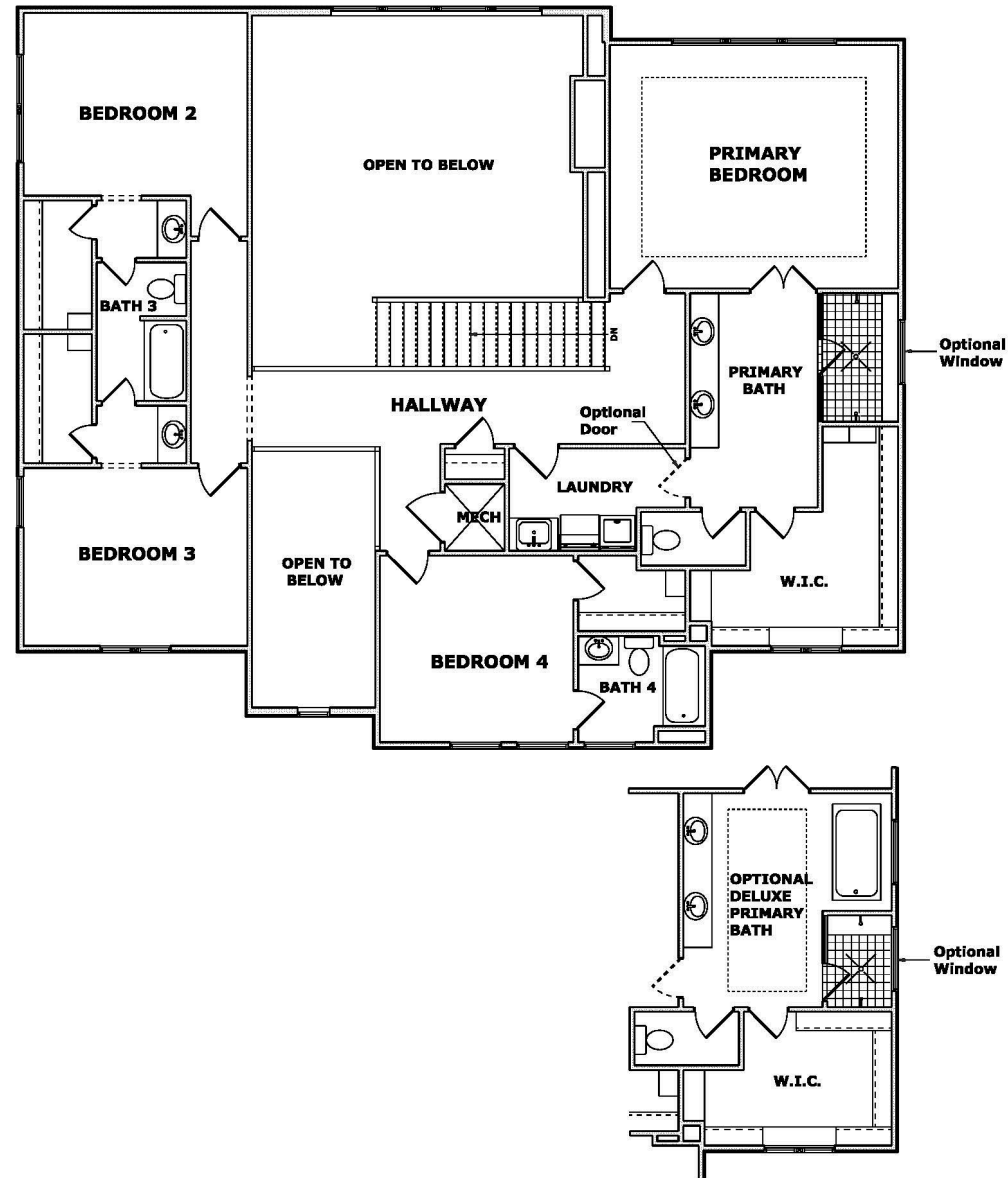
Opus II

MAIN LEVEL



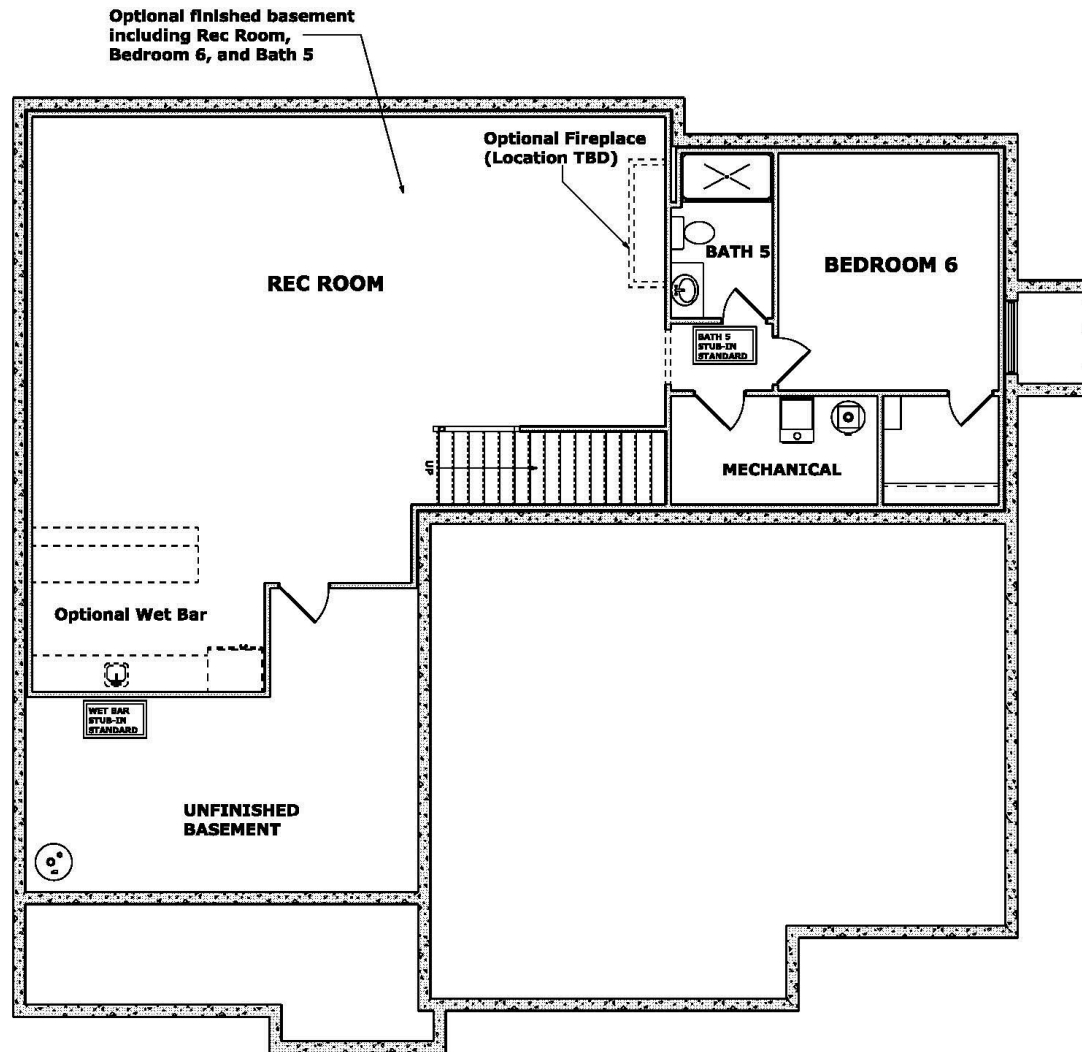
Opus II

UPPER LEVEL



Opus II

OPTIONAL LOWER LEVEL



Opus II

includes the following:

STANDARD FEATURES

INTERIOR FEATURES

- 8' interior doors (main floor) including full view glass double doors at office
- Boot bench with open cubbies and hooks
- Wide plank premium laminate flooring on main level traffic areas
- High traffic stair carpet
- Laundry room sink with lower & upper cabinet and hanging rod
- 48" x 36" Gas fireplace with blower and battery back-up
- 2 Story Great Room
- Floor to ceiling stone fireplace with floating mantel
- TV HDMI chase at fireplace
- Quartz countertops
- Ceiling fans in great room and primary bedroom
- Ceiling fan pre-wire and switch in all bedrooms
- Tray ceiling in primary bedroom
- Tiled primary bath floors and shower
- Two shower heads in primary bathroom shower
- Straight black iron spindles on staircase
- Approx. 9' basement walls
- Plumbing stub for future wet bar/lower-level bath
- Tile floors in all bathrooms
- Wood enameled shelving in all closets & pantry
- 8 lb. carpet pad
- Sherwin-Williams® interior/exterior paint
- CAT 6 outlet at GR Fireplace, Primary Bedroom, Finished LL Rec Room
- Upstairs: shared bath between two bedrooms and one bedroom with a private on-suite
- Wood trimmed mirror frames in primary bathroom and bath 2

EXTERIOR FEATURES

- 8' tall entry door
- 3 car garage - Painted SW Pure White with base trim
- 8' tall garage doors (non-insulated)
- Wi-Fi enabled garage door openers with (1) keypad
- Fully sodded yard with front landscaping
- Irrigation system with shrub zone
- Recessed soffit lighting
- Covered rear patio with fan & light
- 8' Tall Sliding Glass Door - Walkout Lots

KITCHEN

- Built-in GE® stainless steel appliances:
 - Gas cooktop, built-in oven and microwave, upgraded dishwasher with SS interior
- Custom site-finished wood cabinetry with soft close drawers/doors
- Choice of enameled or stained cabinetry
- Under cabinet LED lighting with switch
- Tile backsplash
- Trash/recycle pull-out with bins
- Composite undermount sink
- Oversized island
- USB outlet
- Prep kitchen base cabinet with SS sink, disposal and window

ENERGY EFFICIENCY

- 95% high efficiency gas furnace
- 14 SEER air conditioner
- Programmable thermostat
- Pella® vinyl Low-E thermal windows
- Passive radon mitigation system
- LED light bulbs throughout
- Whole house humidifier

WARRANTY

Your new home will be enrolled in the 2-10 Home Buyers Warranty, a nationwide program. This includes:

- 1 Year workmanship
- 2 Year systems
- 10 Year structural



BE INSPIRED. BUILD INSPIRED. LIVE INSPIRED.

**Standard Features are subject to change without notice and could vary by floor plan, lot, and community.