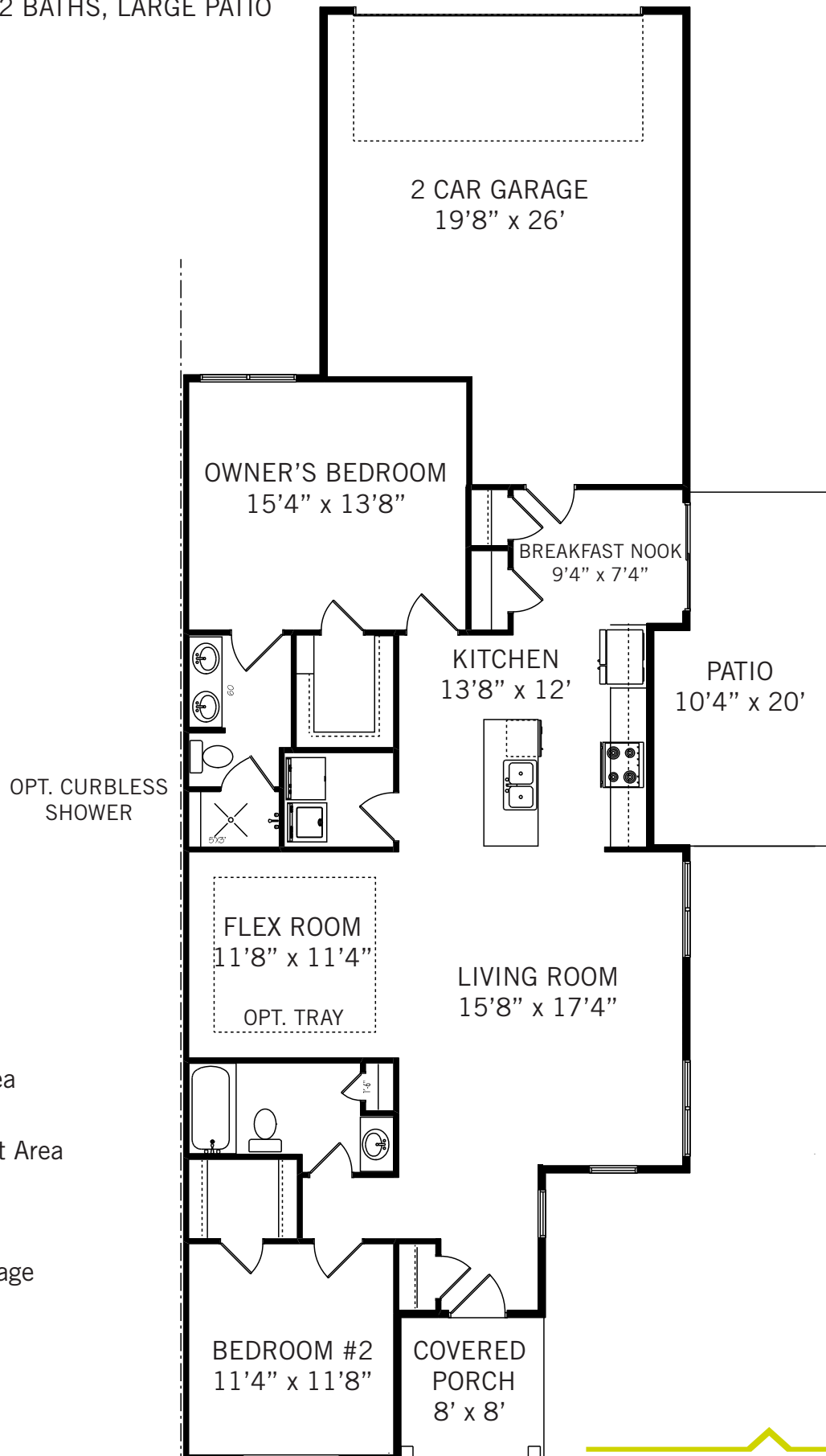


# THE BEDFORD PAIRED HOME // 1,390 SQ FT

2 BEDROOMS, 2 BATHS, LARGE PATIO



## INCLUDED FEATURES

- Open and Spacious Living Area
- Cook's Kitchen with Granite Countertops, Island, Breakfast Area
- Flex Space for Dining/Office
- Large Patio
- Attached Oversized 2 Car Garage

**CORNERSTONEHOMES.NET**

Subject to change without notice. The designs shown here, as well as the entire Development System, are the property of EPCON Communities Franchising Inc. And are subject to both copyright and patent protection. Use of any part of these designs or the Development System is prohibited without the written consent for EPCON Communities Franchising Inc. A condominium unit may be reserved on a non binding reservation agreement, but no contract of sale or lease may be entered prior to registration. EPCON Communities Franchising Inc. 1999-2019

**cornerstone**  
HOMES