

Built for the Way You Live.

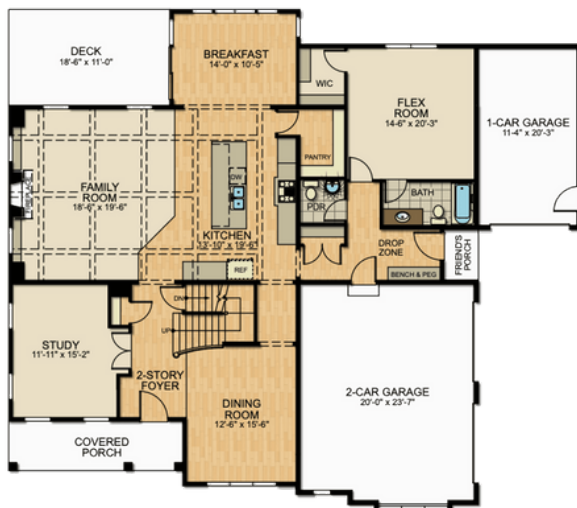


4 Beds | 3.5 Baths | 3,894 SF

Huntleigh

- ▶ 2-Story Home
- ▶ 4 Bedrooms
- ▶ 3.5 Bathrooms
- ▶ 3 Car Garage
- ▶ 2nd Floor Owner's Suite
- ▶ 2nd Floor Laundry
- ▶ 2-Story Foyer
- ▶ Walk-in Pantry
- ▶ 1st Floor Flex Room & Study
- ▶ Opt. Fireplace Library Wall

Floor Plan



FIRST FLOOR



SECOND FLOOR

*Please check with New Homes Specialist for variations or changes to this plan. All square footages, floor plans, and dimensions are approximate and are subject to change without notice. Actual configuration may vary based on specific lot size, shape, and topography. Home square footages vary based on elevation and options selected. Floor covering placement is shown for presentation purposes only. Plans are shown with optional features and layouts not included with base pricing.

Built For The Way You Live.

garmanbuilders.com

717-733-4383

Garman
BUILDERS

