



CEDAR RIDGE

VILLAGE OF PLEASANT PRAIRIE

PHASE 1

| LOT | LOT SIZE SF | PRICE | STATUS | EXPOSURE | LOT | LOT SIZE SF | PRICE | STATUS | EXPOSURE |
|-----|-------------|-----------|--|--|-----|-------------|-----------|---|---------------------|
| 1 | | | Sold | | 19 | 19,405 | \$180,990 | Available | None |
| 2 | | | Sold | | 20 | | | Sold | |
| 3 | 13,600 | | FUTURE GENEVA READY HOME \$784,900 | None; Backs up to Wooded Park | 21 | 19,537 | \$180,990 | Available | None |
| 4 | | | Sold | | 22 | | | Sold | |
| 5 | | | Sold | | 23 | 14,711 | \$175,990 | Available | 4' Lookout |
| 6 | 13,600 | \$189,990 | Available | None; Backs up to Wooded Park | 24 | 19,776 | \$177,990 | Available | 4' Lookout |
| 7 | | | Sold | | 25 | 19,547 | \$184,990 | Available | 8' Walkout |
| 8* | 13,600 | | GLENWOOD READY HOME \$839,900 | None; Backs up to Wooded Park | 26 | | | Sold | |
| 9 | 13,600 | | FUTURE DANBURY READY HOME \$844,900 | None; Backs up to Wooded Park | 27 | | | Sold | |
| 10 | 13,600 | \$183,990 | Available | None; Backs up to Tree Line & Open Land | 28 | | | Sold | |
| 11 | 13,906 | \$182,990 | Available | None; Backs up to Tree Line & Open Land | 29 | | | Sold | |
| 12 | 13,652 | \$184,990 | Available | None; Backs up to Tree Line & Open Land | 30 | 19,040 | \$174,990 | Available | 4' Lookout |
| 13 | 15,116 | \$159,990 | Available | None | 31 | | | Sold | |
| 14 | 14,704 | | Under Contract | None | 32 | 13,919 | \$174,990 | Available | 4' Lookout |
| 15 | 15,341 | \$159,990 | Available | None | 33 | 16,587 | \$164,990 | Available | None |
| 16 | 13,600 | \$165,990 | Available | None | 34 | 13,600 | \$176,990 | Available | 4' Corner Lookout |
| 17 | 13,600 | | FUTURE ASHFORD READY HOME | None | 35 | 14,250 | | FUTURE SUMMERHILL READY HOME | 4' Corner Lookout |
| 18 | 17,153 | \$169,990 | Available | None | 36 | 13,541 | | FUTURE MODEL HOME | None; Pond Frontage |

Lot sizes are approximate and should be verified with the recorded final plat. Prices subject to change at any time.

Map on Other Side →



ASK RYAN!

Online Sales Consultant

262-884-9551

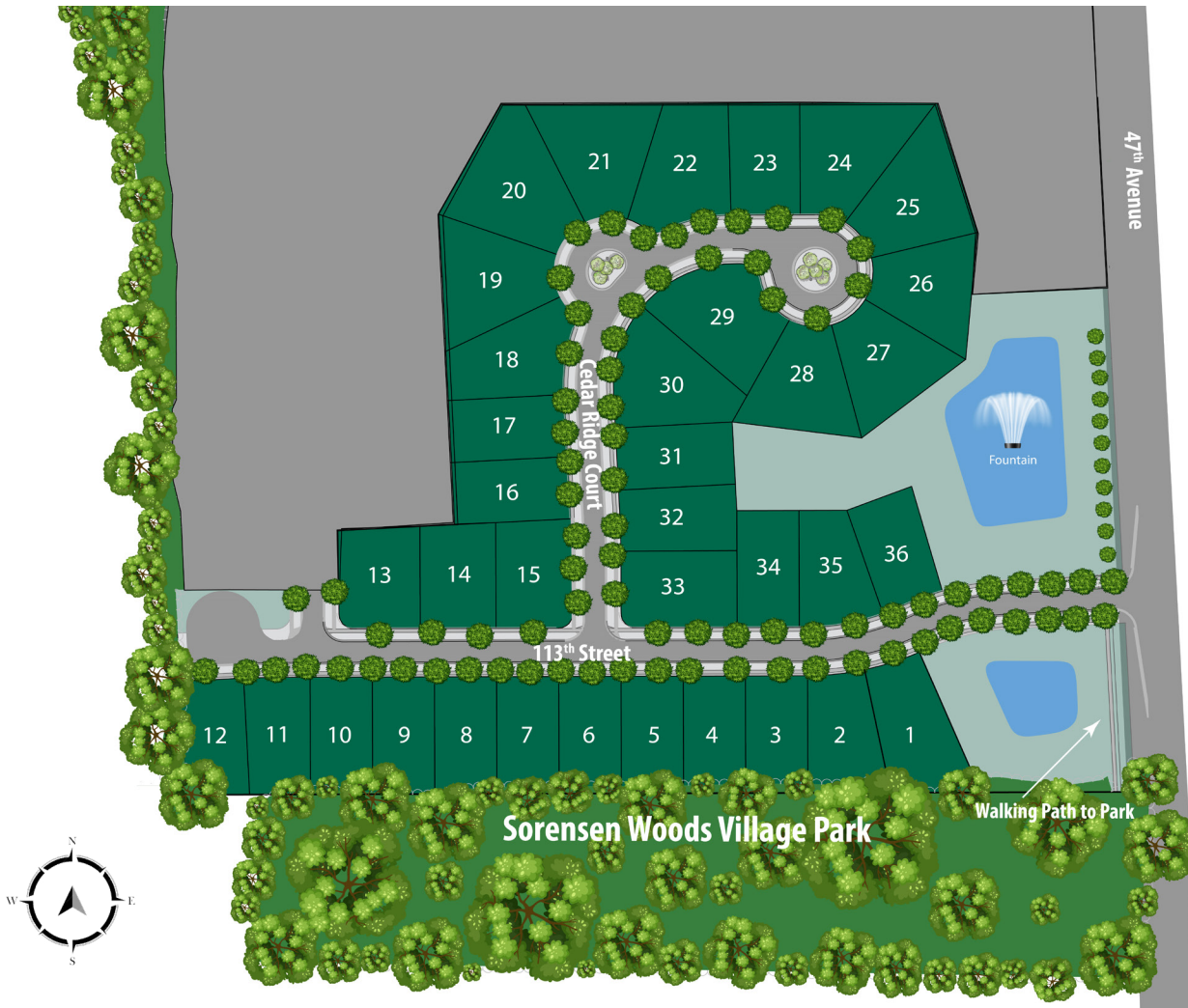
sales@korndoerferhomes.com





CEDAR RIDGE

VILLAGE OF PLEASANT PRAIRIE



Neighborhood Highlights

- Home & Lot Packages from the \$650's
- Fully improved lots with municipal water and sewer
- Neighborhood sidewalks
- Bordered by mature trees and Neighborhood Village Park
- Kenosha Unified School District
- Short drive to [RecPlex](#), the largest municipal recreation facility in America

Covenants

- **Ranch:** 1,700 SF minimum
- **Multi story:** 2,100 SF minimum
- Refer to the protective covenants for details.

[262-884-9551](tel:262-884-9551)
sales@korndoerferhomes.com