



CALIBER HOMES

CHARACTER REDEFINED

# 505 Aermotor

Offered at  
**\$619,800**



## THE PATTON

ELEVATION "A"

### PROPERTY FEATURES:



4 Bedroom



2.5 Bathroom



2 Car



2694 Sq Ft



Full Foam Insulation

### ABOUT:

"Always do more than is required of you."  
— George Patton

This High Caliber Plan, tactfully named The Patton, is the perfect split floorplan nestled amongst a beautiful tree lined setting in Windmill Creeks. Come Enjoy the peace and quiet this home has to offer.

### CONTACT DETAILS:



817-790-9559



[sales@caliberhomestx.com](mailto:sales@caliberhomestx.com)



[www.caliberhomestx.com](http://www.caliberhomestx.com)

All not cop the squ  
All plans and elevations are subject to change without prior notice. All Caliber Homes floor plans & elevations are copyrighted. Caliber Homes will enforce copyright laws to their fullest extent. All plan numbers are approximations of square footage and may vary with alternate elevations.

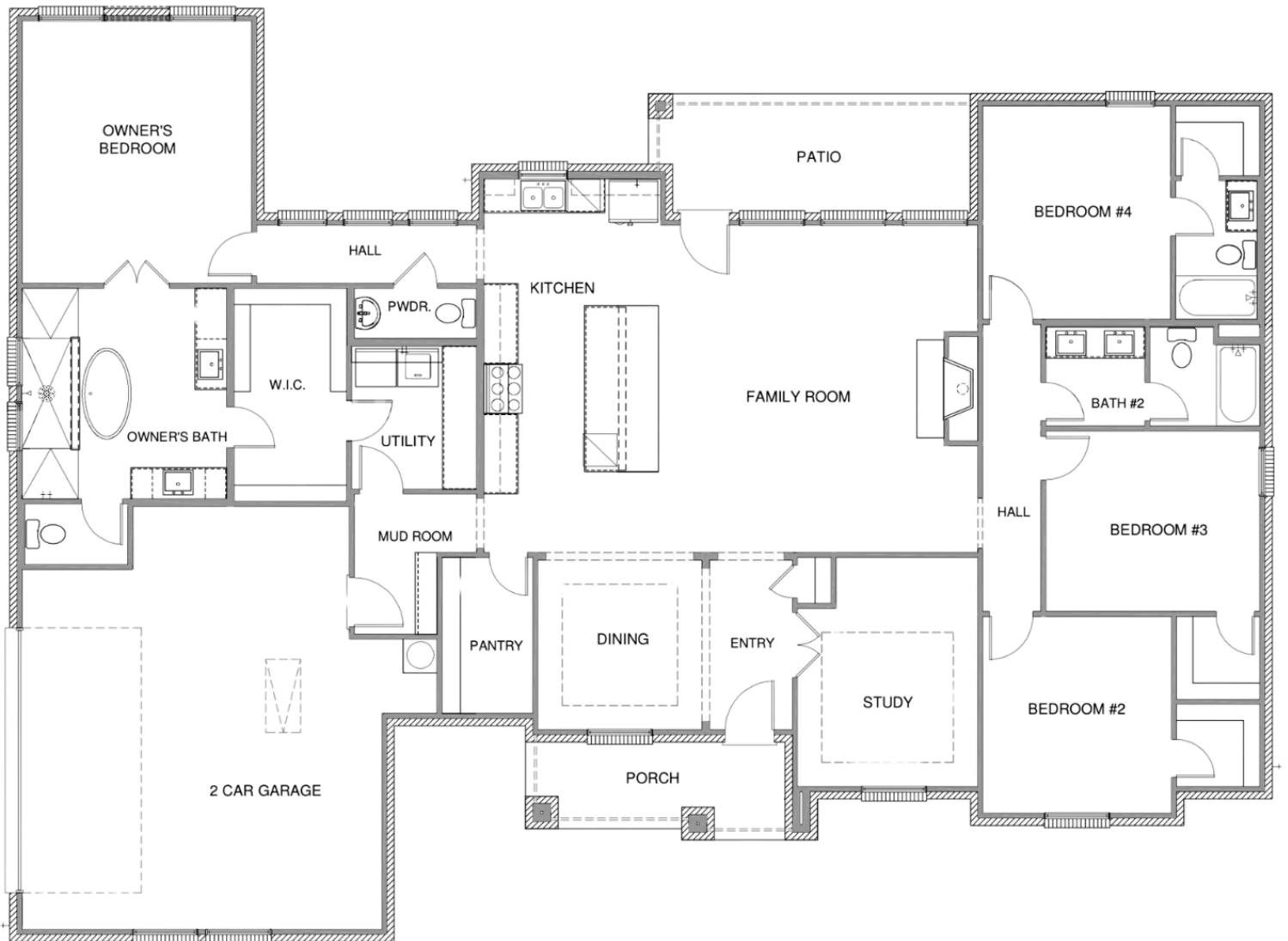
Please note: In an effort to continually improve our floor plans and elevations, Caliber Homes reserves the right to make alterations to the designs without prior notice.



CALIBER HOMES

CHARACTER REDEFINED

# 2694 SQ. FT. THE PATTON



## SQUARE FOOTAGE TOTALS

2694	1ST FLOOR
0	2ND FLOOR
234	COVERED PORCHES
593	GARAGE
3521	TOTAL A.U.R.

All plans and elevations are subject to change without prior notice. All Caliber Homes floor plans & elevations are copyrighted. Caliber Homes will enforce copyright laws to their fullest extent. All plan numbers are approximations of square footage and may vary with alternate elevations.

Please note: In an effort to continually improve our floor plans and elevations, Caliber Homes reserves the right to make alterations to the designs without prior notice.