

# The Ambrose

BY TODD HOMES LLC

**TODD**  
Homes  
llc.com  
Affordable Luxury



## THE AMBROSE FEATURES:

- Experience approximately 3,366 square feet of luxury in this 5 or 6-bedroom open concept estate-style home tailored to your specifications.
- Choose between a magnificent two-story great room or an additional sixth bedroom to suit your needs!
- The versatile first-level suite, complete with a full bath, can serve as a second office, guest suite, 5th bedroom, or a personal gym—perfect for any lifestyle!
- The stunning kitchen features a spacious island, elegant granite countertops, soft-close shaker cabinetry, Moen fixtures, and modern stainless steel appliances for culinary excellence.
- The inviting two-story great room showcases a breathtaking window wall and an optional floor-to-ceiling fireplace, opening seamlessly to the high-end kitchen and an optional sunroom.
- The expansive owner's retreat boasts a generous walk-in closet and a luxurious spa bath featuring an oversized walk-in shower and quartz vanity.
- Numerous customization options are available—ask us about our finished lower level, chef's kitchen, and deluxe bath upgrades!



Virtually Staged Features Shown Not Included. Finishes May Differ.



Virtually Staged Features Shown Not Included. Finishes May Differ.

 **5 or 6**  
Bedrooms

 **3.5**  
Bathrooms

 **2 or 3**  
Garage

 **3366**  
Square Feet

# The Ambrose

BY TODD HOMES LLC

**TODD**  
Homes  
llc.com  
Affordable Luxury



Virtually Staged Features Shown Not Included. Finishes May Differ.



Virtually Staged Features Shown Not Included. Finishes May Differ.



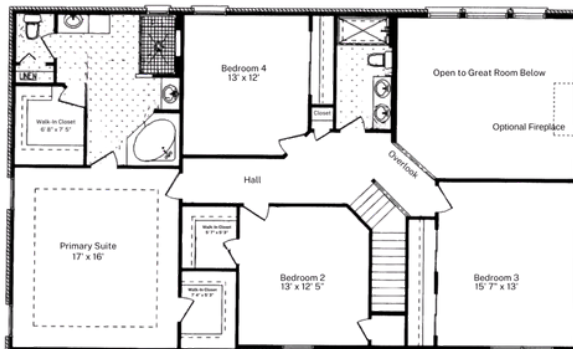
Virtually Staged Features Shown Not Included. Finishes May Differ.



Virtually Staged Features Shown Not Included. Finishes May Differ.



Main Level



Second Level



EXPLORE  
THE AMBROSE

Copyright 2026 Todd Homes LLC. All rights reserved. Please be aware that, in line with our dedication to ongoing product enhancement, we reserve the right to alter our home pricing, availability, features, choice of product brands, dimensions, architectural details, and design specifications. This brochure serves solely for illustrative purposes and does not form any part of a legally binding contract. The photos may include upgrades that are not included in the base pricing. Room sizes approximate.

CONTACT US



513.823.3774

VISIT US:



www.toddhomesllc.com