

Langley



2,105 sq ft



4 bed



2 bath



a

traditional



b

traditional



e

craftsman



f

modern

FEATURES YOU'LL LOVE ABOUT THIS HOME

great options to create
home workspaces

spacious kitchen for the home
cook that entertains

easy-start fireplace featured
in the living room

master suite with attached bath including a
roomy walk-in closet with two entrances

mud room with organization near
the garage entry and utility room



IDEAL
homes | neighborhoods®



**HERE'S HOW WE DEVELOP
EVERY IDEAL FLOOR PLAN:**

We consider everything ...

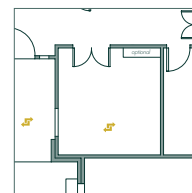
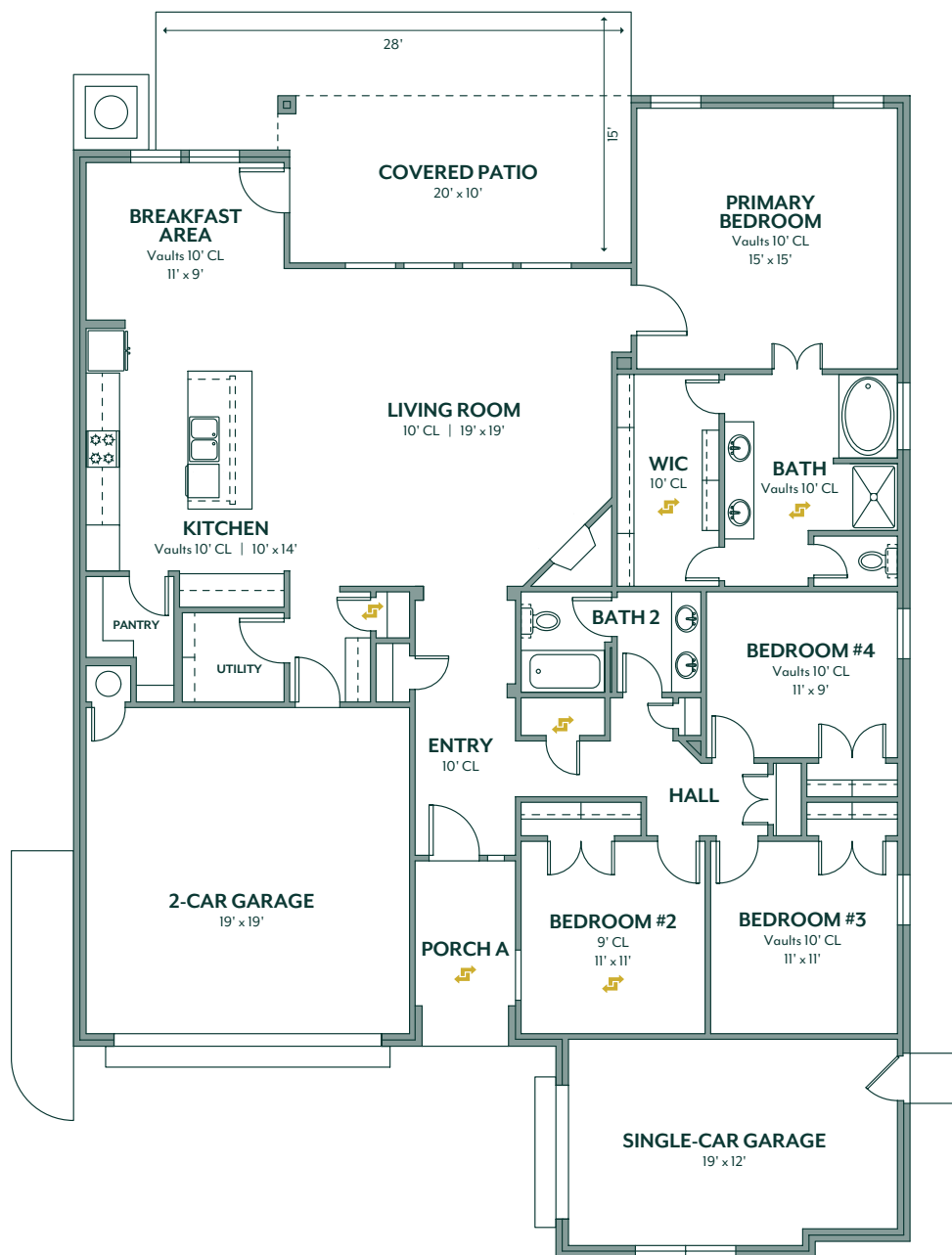
- sight lines & traffic flow
- furniture placement
- usable space
- architectural details
- window placement & size for optimal lighting
- function & low maintenance needs

405.364.1152

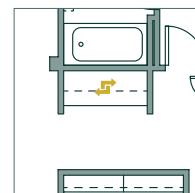
www.idealhomes.com



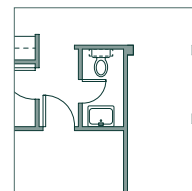
customize this plan



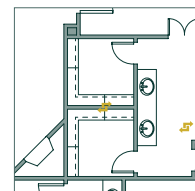
study ILO
bedroom four



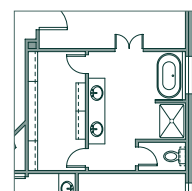
desk nook in
hallway



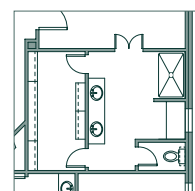
powder
bath



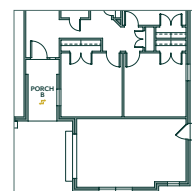
his & her
closets



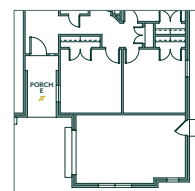
primary bath:
OPT 1



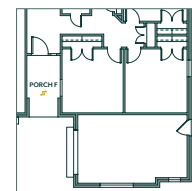
primary bath:
OPT 2



porch b



porch e



porch f



Scan the code to view a **photo gallery & included features**
for the Langley floor plan