



284 E. CONCORD FARM LANE
DRAPER, UTAH



LOT 8 | SOUTHWICK



6 Bedrooms



3.5 Bathroom



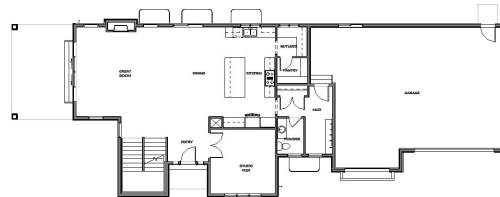
3 Car Garage



4,126 SF Total



Basement



Main Floor



Main Floor

EXTERIOR COLOR PACKAGE



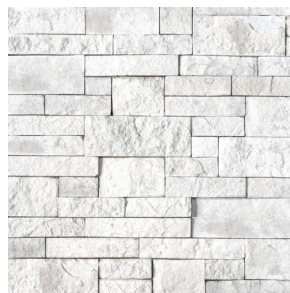
ROOFING

IKO Cambridge:
Dual Black



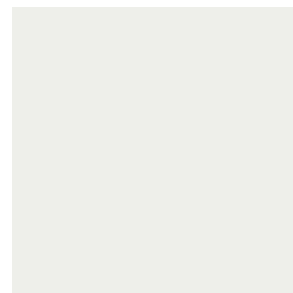
SOFFIT/FASCIA

Ply Gem Mastic:
Black



STONE COLOR

HARRISTONE
White Sand Divino
ledge dry stack



STUCCO COLOR, BOARD & BATTEN

SW7006:
Extra White



LAP SIDING COLOR

SW9634:
Morning at Sea



FRONT DOOR

SW6991:
Black Magic



RAIN GUTTERS

Black



GARAGE DOOR COLOR

Flat Panel:
Black

For details on the interior package, please request an Interior Package booklet from the agents.

The information provided is for illustrative purposes only and may not be exact. All prices, materials, measurements, images, and renderings are subject to change without notice.

primed^{RE}
REAL ESTATE

134 W. 13100 S., Suite 200
Draper, Utah 84020

www.primedre.com

Call our preferred lender for details on incentives,
rate, and borrower specific qualifications.
Jordan Duckett: (801) 636-9069 with Security National Mortgage.



SANDY EWING

ASSOCIATE BROKER/
SALES CONSULTANT

(801) 652-4424
sandyewing@primedre.com



DESI EDDY

NEW HOME
SALES CONSULTANT

(801) 574-9050
desieddy@primedre.com