

DESIGN

HICO - 5239



SHADDOCK
—HOMES—



A



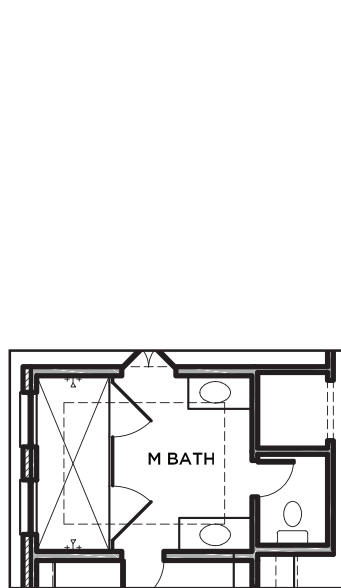
B



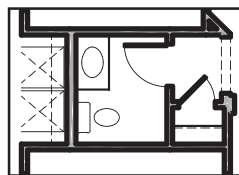
C



All Product including Architectural Designs, ©2000-2025, Shaddock Homes, LTD., All rights reserved. There may be existing or future design changes made in the floorplans, building products, methods, square footage, or designs used in our homes that are not reflected in our information, sales center or in our models. The materials, designs, square footages, features, and amenities shown are based upon current development plans, which are subject to change without notice. No guarantee is made that the designs, square footages, materials, features, and amenities depicted by artist's renderings or otherwise described will be built, or if built, will be of the same type, size or nature as depicted or described. All stone elevations, metal roofs, cast stone door and window headers and solid sawn cedar posts are optional, but available via change order. Front doors will match the specification sheet or chosen door upgrade. Prices and terms subject to change without notice. **REVISION DATE: 11.5.2019**



OPT
EXTRA
LARGE SHWR



OPTIONAL
POWDER

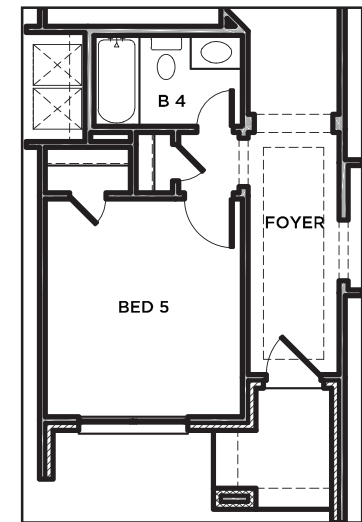
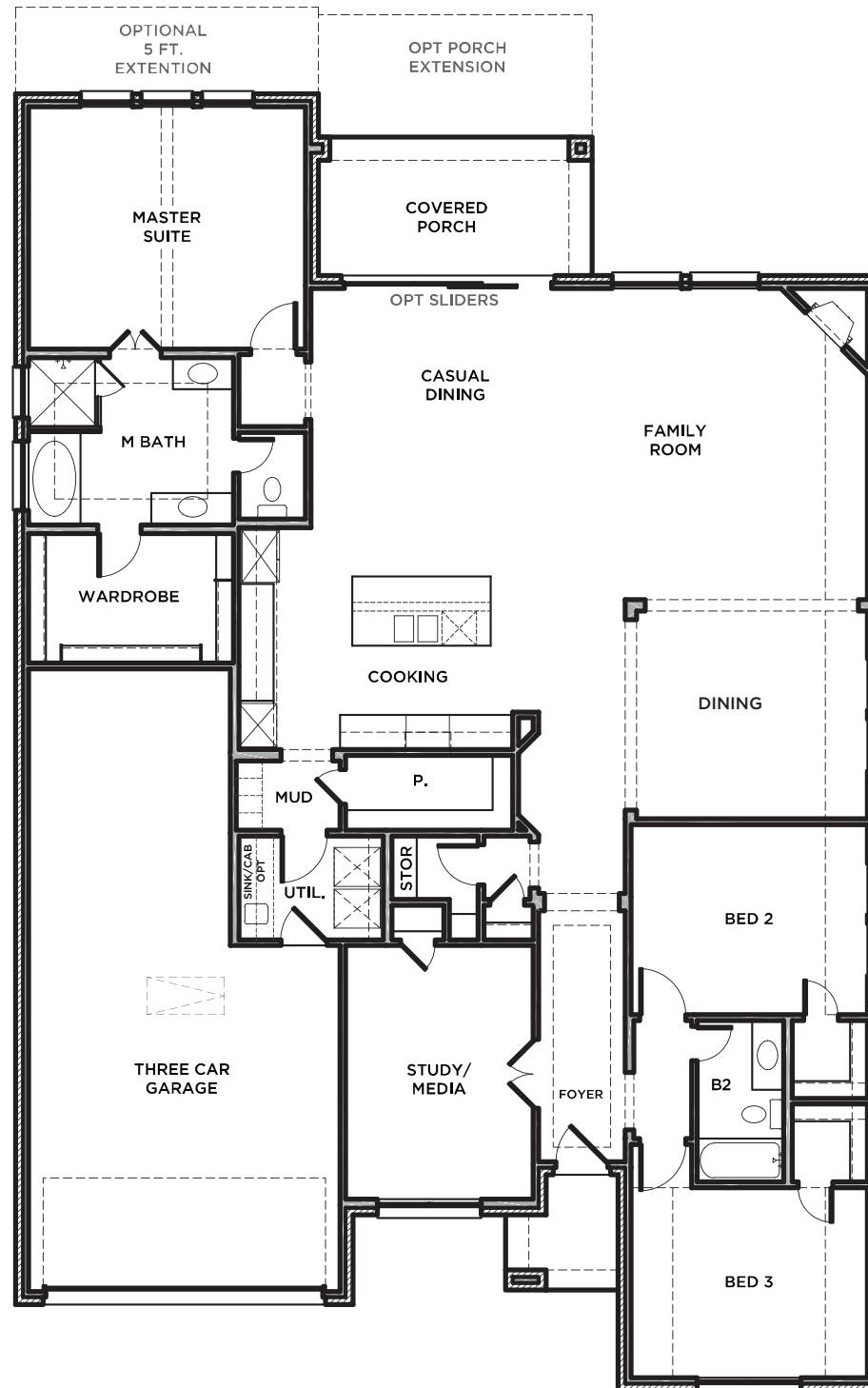
HICO 5239 (11.5.19)

	S.FT
First Floor	2554
Total Living Area	2554
3 Car Garage	592
Covered Porch	38
Covered Patio	130
Total Area	3314

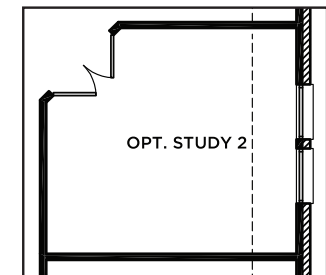
Options:

5' Master Ext.	88
Ext. Porch	32

SHADDOCK HOMES



OPT BED 5 & BATH 4



OPT STUDY IN LIEU
OF DINING