

Bill Clark Homes

Building. Family. Traditions.



Elevation A



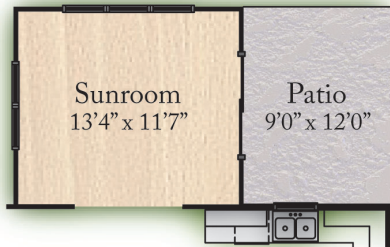
Elevation B

THE TURNER at Laurel Oaks

2,182 Sq.Ft. | **3** BEDROOMS | **2.5** BATHS

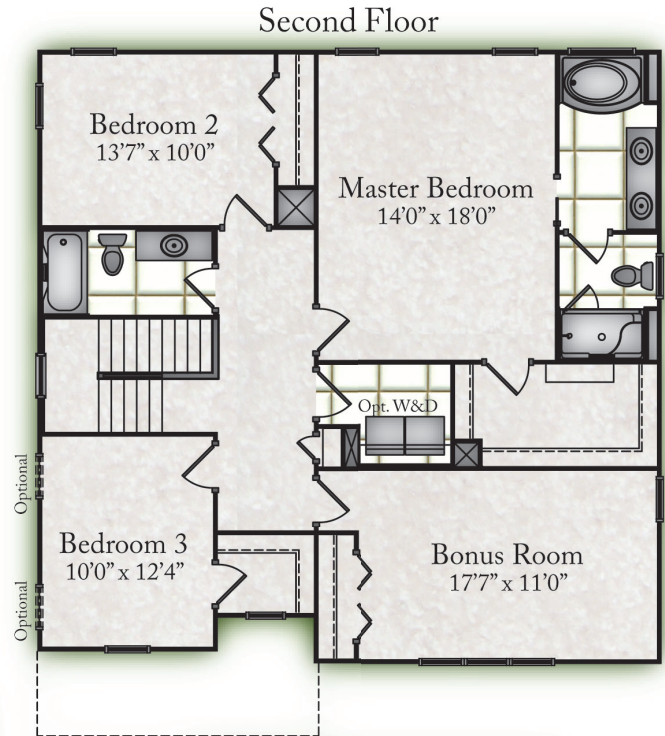
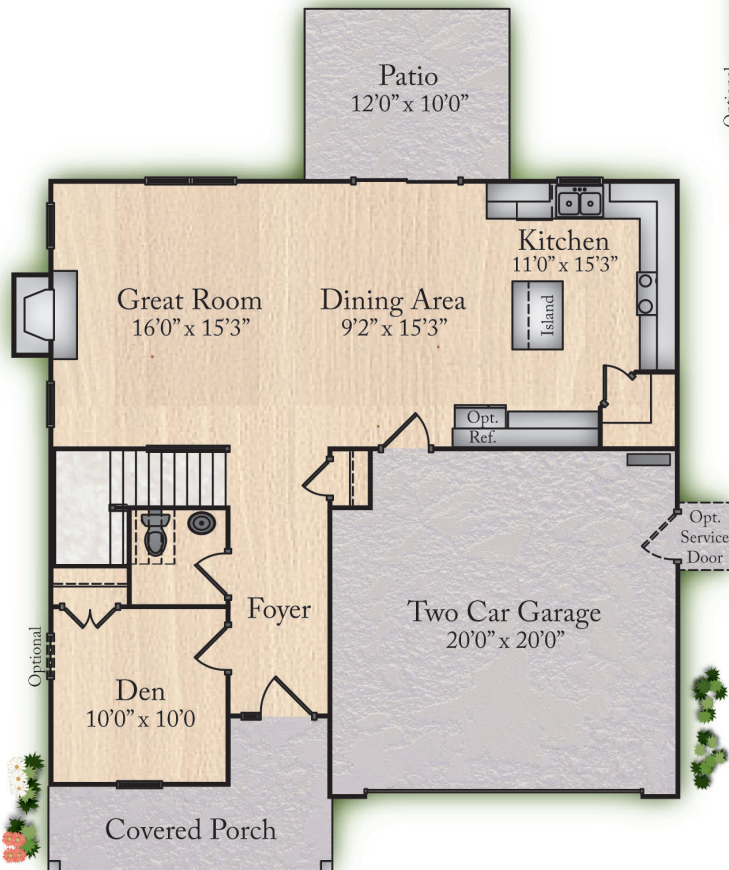
THE TURNER

2,182 Sq.Ft. | 3 BEDROOMS | 2.5 BATHS

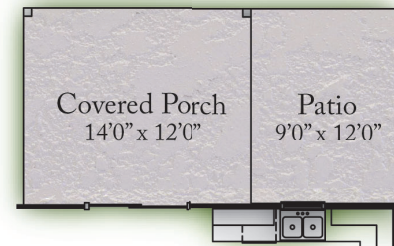


Optional Sunroom

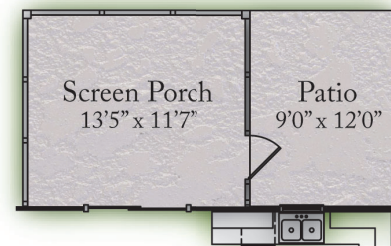
First Floor



Second Floor



Optional Covered Porch



Optional Screen Porch

Continuous improvements of our plans and community specifications may result in changes without notice. Any dimensional data shown is approximate. Artwork is for illustrative purposes only. Actual construction details may vary.

This plan is property of Bill Clark Homes. Duplication of this plan is prohibited.

01/24/22