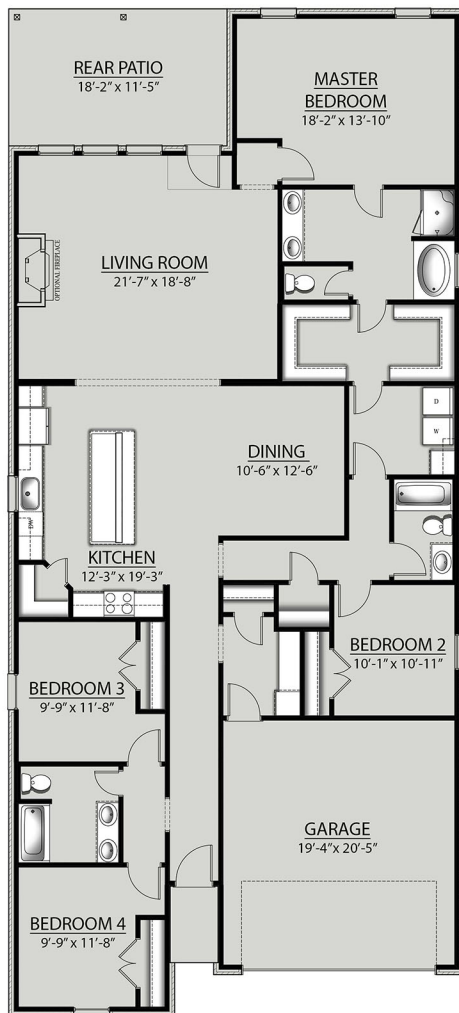


THE AZALEA A IV PLAN



Living Area

2438 Square Feet

Total Area

3104 Square Feet

Exterior Features

- Brick & Stucco Exterior
- Covered Rear Patio
- Two Car Garage

Interior Features

- Open Floor Plan
- Four Bedrooms, Three Bathrooms
- Recessed Can Lighting in Kitchen & Living Room
- Walk-In Pantry
- Boot Bench in Mud Room
- Double Master Vanity
- Master Garden Tub
- Separate Master Shower
- Walk-In Master Closet



Floor plans and elevations are subject to change without notice. Elevations and renderings are artistic conceptions and may not accurately depict home styles. Windows, doors and plan configurations are subject to change per elevation. Information contained in this flyer is subject to errors, omissions, changes, withdrawals and prior sales without notice.