



The Millpond | 3 Bed / 2.5 Bath | 1335 sqft
Starting at \$199,500

HOME FEATURES

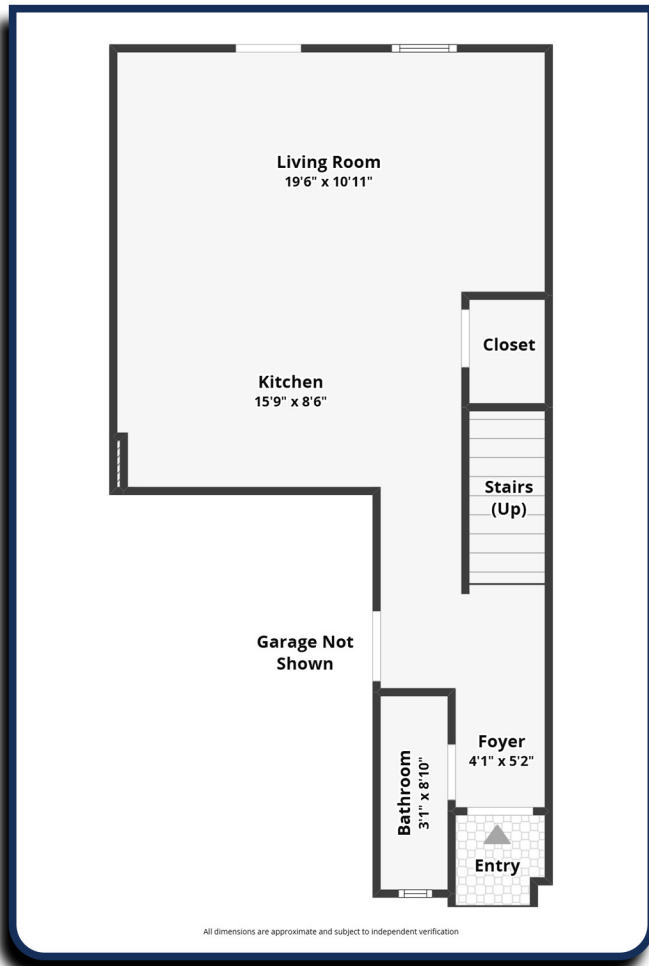
- OPEN-CONCEPT MAIN LEVEL WITH LVP FLOORING
- SPACIOUS LIVING ROOM WITH NATURAL FLOW
- KITCHEN WITH GRANITE COUNTERTOPS
- SHAKER CABINETS & SUBWAY TILE BACKSPLASH
- CONVENIENT BAR SEATING FOR CASUAL DINING
- PRIVATE OWNER'S SUITE WITH WALK-IN CLOSET
- TWO ADDITIONAL BEDROOMS + FULL BATH UPSTAIRS
- CENTRALLY LOCATED LAUNDRY ROOM
- SMART HOME PACKAGE (DOORBELL, LOCK, THERMOSTAT, GARAGE)

Schedule a Tour Today!

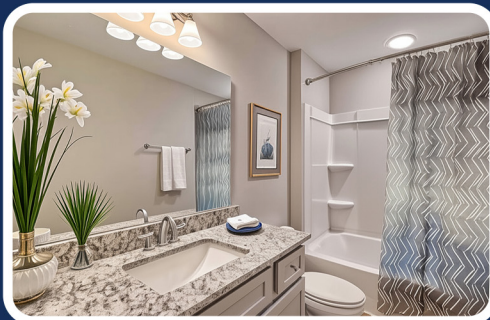
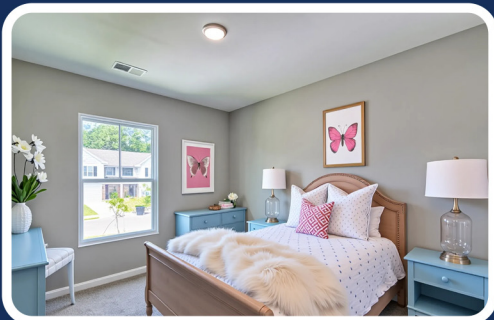
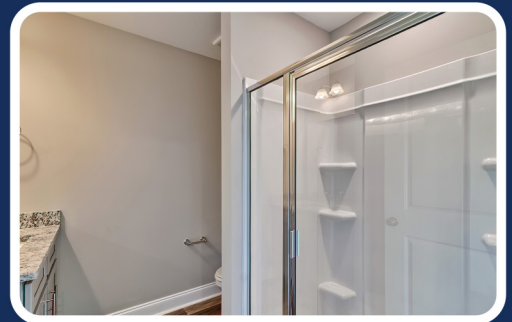
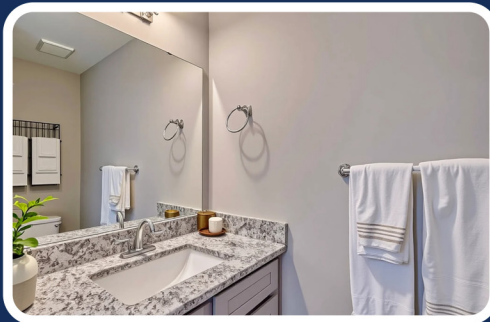
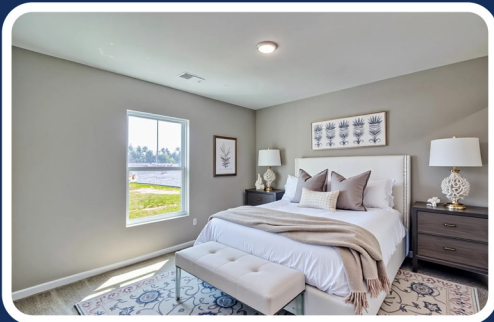
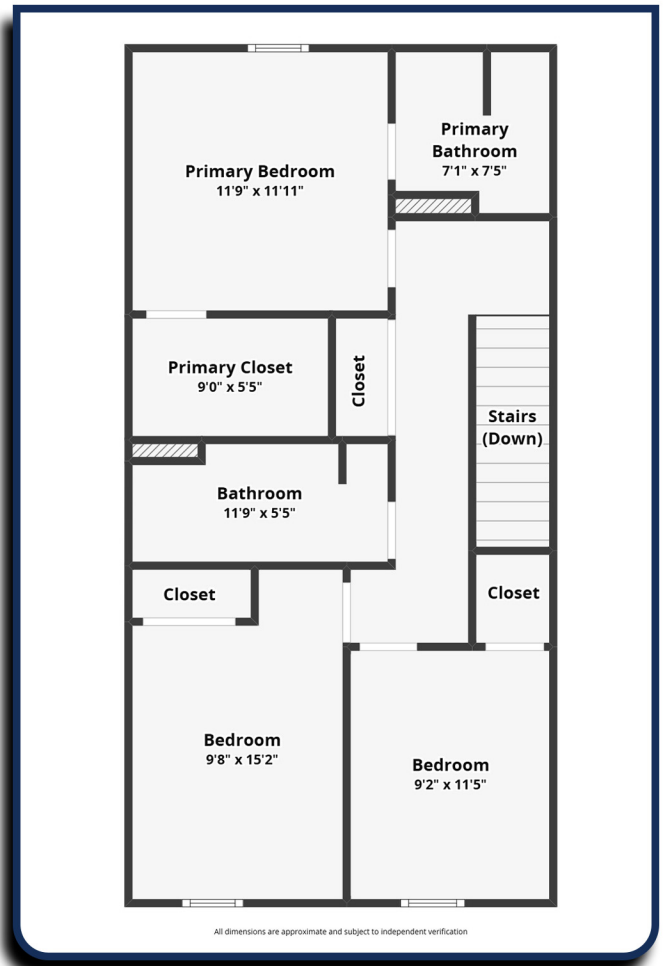
Visit: [ECHouses.Com](https://www.ECHouses.com) | Call: (803) 399-0266



1ST FLOOR



2ND FLOOR



Visit: [ECHouses.Com](https://www.ECHouses.com) | Call: (803) 399-0266