



CALIBER HOMES

CHARACTER REDEFINED

6012 Kodiak

Offered at

\$853,855



ELEVATION "A"

The Patton

PROPERTY FEATURES:



4 Bedroom



3.5 Bathroom



3 Car



2728 Sq Ft



Full Foam Insulation

ABOUT:

"If everyone is thinking alike, then somebody isn't thinking."

-George S. Patton

We definitely think outside the box at Caliber Homes TX and our Patton Plan is no exception. It boasts a split floor plan including a game room, study and separate dining area that flows perfectly into the kitchen and main living area.

CONTACT DETAILS:



817-360-0249



sales@caliberhomestx.com



www.caliberhomestx.com

All plans and elevations are subject to change without prior notice. All Caliber Homes floor plans & elevations are copyrighted. Caliber Homes will enforce copyright laws to their fullest extent. All plan numbers are approximations of square footage and may vary with alternate elevations.

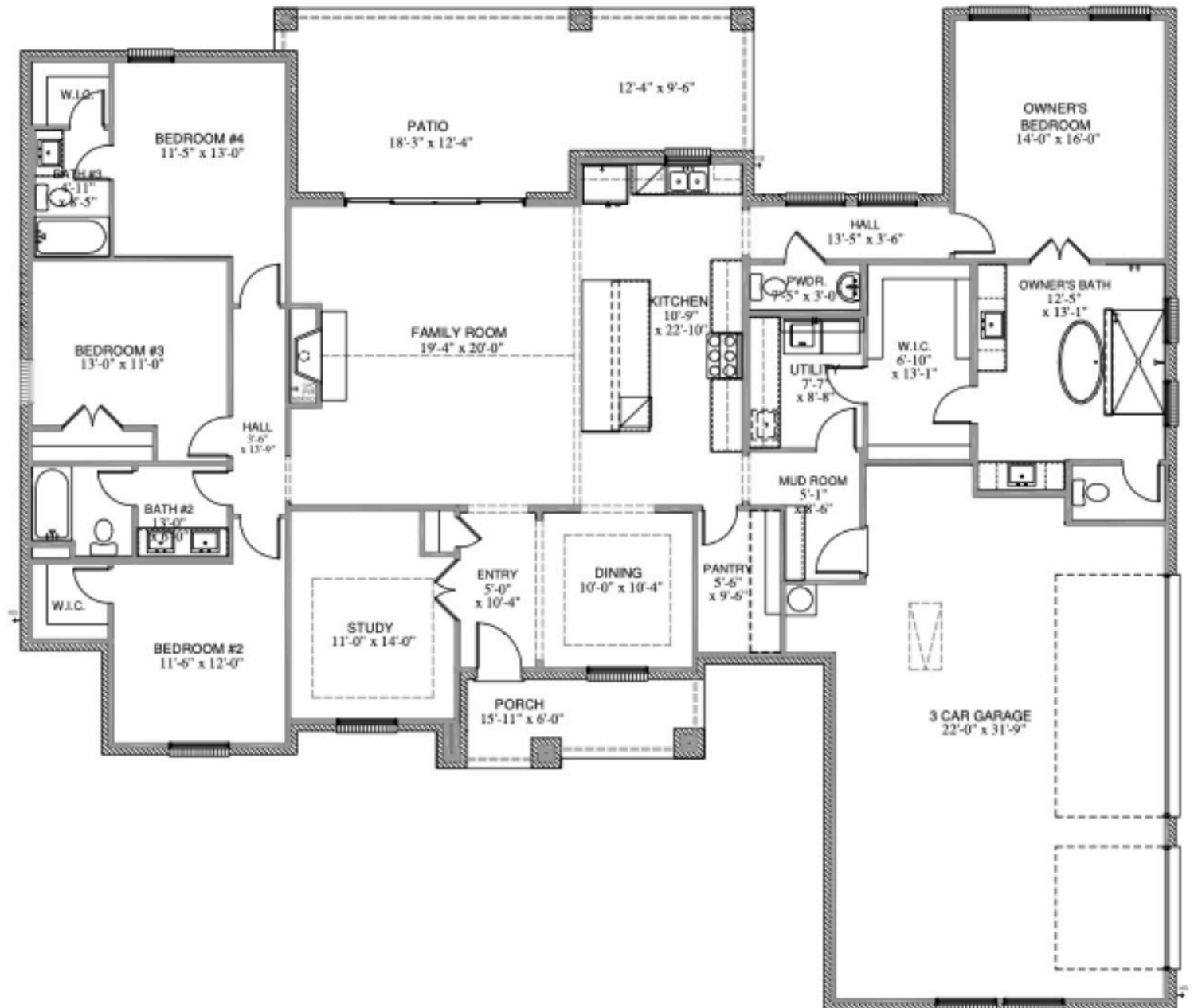
Please note: In an effort to continually improve our floor plans and elevations, Caliber Homes reserves the right to make alterations to the designs without prior notice.



CALIBER HOMES

CHARACTER REDEFINED

2728 SQ. FT THE PATTON



SQUARE FOOTAGE TOTALS

2728	1ST FLOOR
0	2ND FLOOR
442	COVERED PORCHES
812	GARAGE
3982	TOTAL A.U.R.

All plans and elevations are subject to change without prior notice. All Caliber Homes floor plans & elevations are copyrighted. Caliber Homes will enforce copyright laws to their fullest extent. All plan numbers are approximations of square footage and may vary with alternate elevations.

Please note: In an effort to continually improve our floor plans and elevations, Caliber Homes reserves the right to make alterations to the designs without prior notice.