

# The Brentwood

**TODD**  
Homes  
llc.com  
Affordable Luxury

BY TODD HOMES LLC



## THE BRENTWOOD FEATURES:



- Custom, Modern Craftsman at 3350 SF with 4/5 BR & 3.5/4.5 BA
- An Open-Concept Plan, Accentuated by Soaring Ceilings, Fosters Connectivity Throughout the Living Spaces
- Private 1<sup>st</sup> Floor Primary Suite has a Walk-In Closet & Adjoining Spa-Like Bath with a Walk-In Shower, Quartz Topped Vanity & Dual Sinks. Add the Optional Soaking Tub For a Relaxing Retreat
- Expansive 2 Story Great Room Flows Easily Into the Kitchen
- 2<sup>nd</sup> Floor Loft & a Nanny/Guest Ensuite with Full Bath
- Spacious, Upscale Kitchen With Granite Countertops, 8ft Island, Soft Close Shaker Cabinetry & Stainless Steel Appliances
- Beautiful & Durable LVT Flooring In All Shared Living Spaces
- Included Unfinished Lower Level With Full Bath Rough-In & Optional Egress For Future Living Spaces
- Optional Finished Lower Level with Full Bath, 5th Bedroom, Recreation Room & Home Office/Gym



4 - 5  
Bedrooms



3.5 - 4.5  
Bathrooms

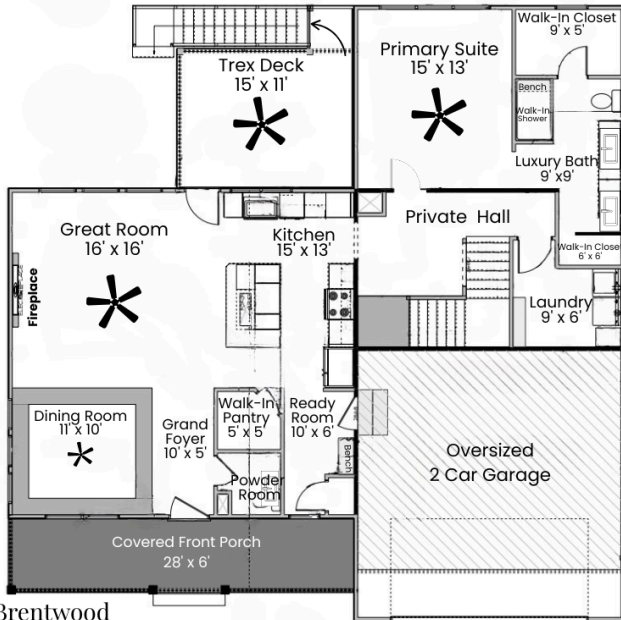
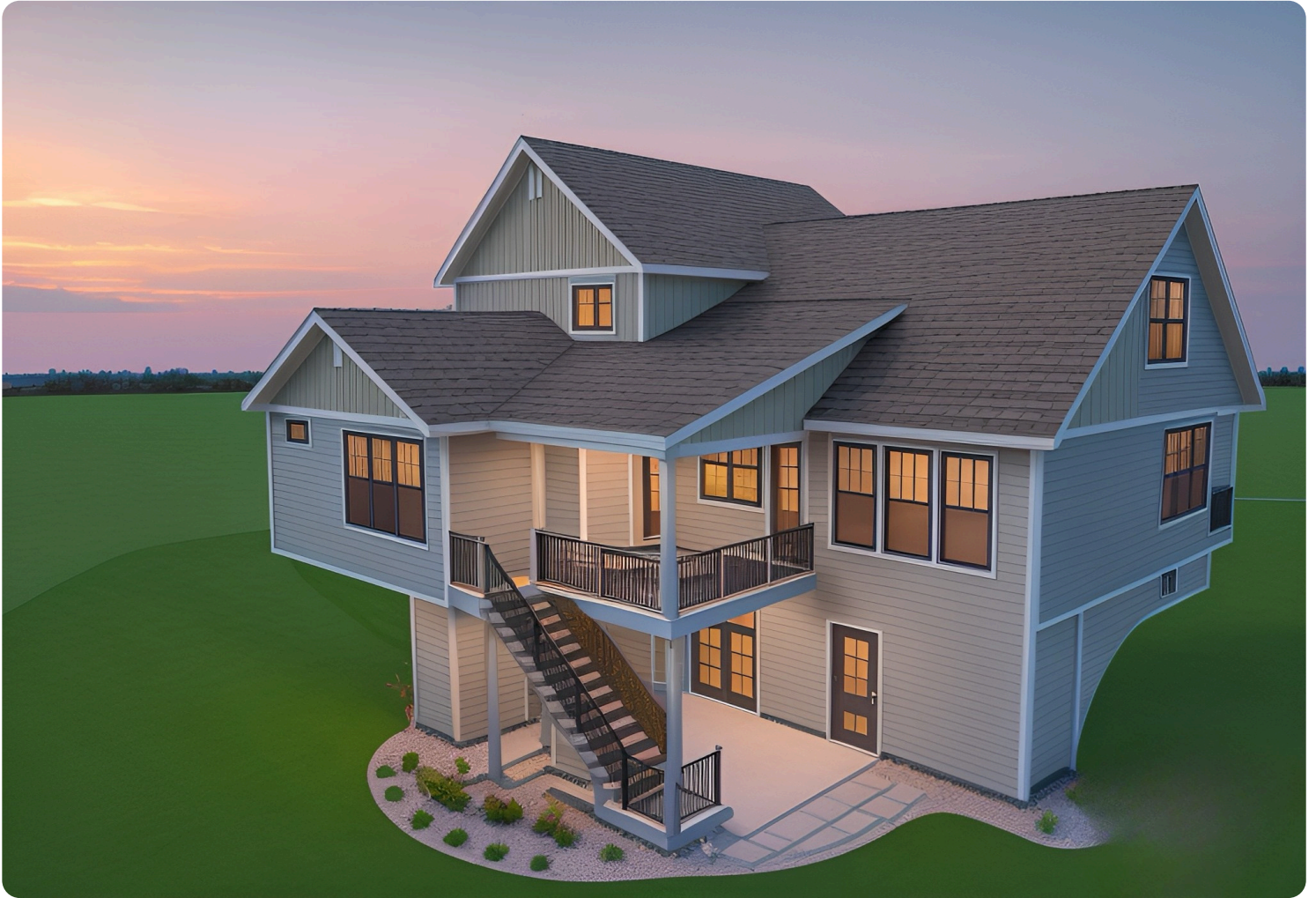


2  
Garage



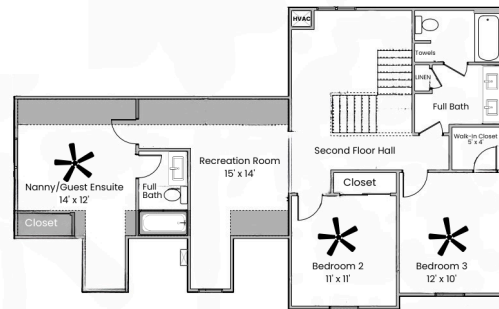
3350  
Square Feet



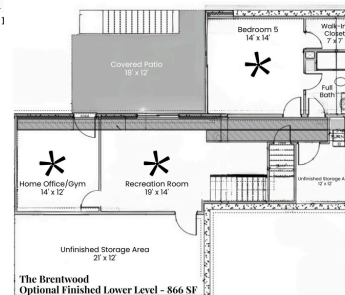


The Brentwood  
First Floor - 1373 SF

Copyright 2025 Todd Homes LLC. All rights reserved. Room sizes approximate.



The Brentwood  
Second Level - 1



The Brentwood  
Optional Finished Lower Level - 866 SF

Optional Finished Lower Level

Copyright 2025 Todd Homes LLC. All rights reserved. Please note that floor plans, tours & photos are intended for illustrative purposes only and cannot be used for building or design purposes. Sizes and dimensions provided are approximate and not guaranteed. Floor plan may include upgrades; please ask your Sales Professional for details.