

# DESIGN

DAYTON - 6421



A



B



C



E



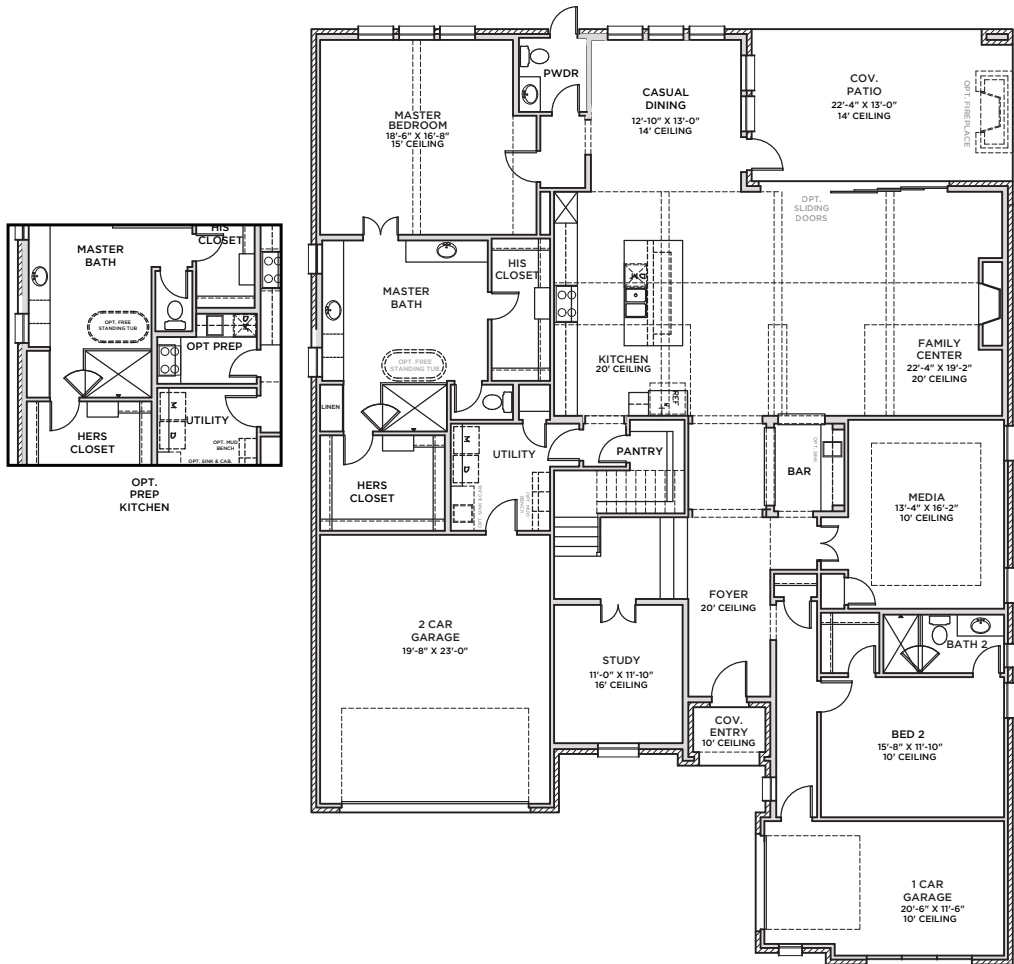
G



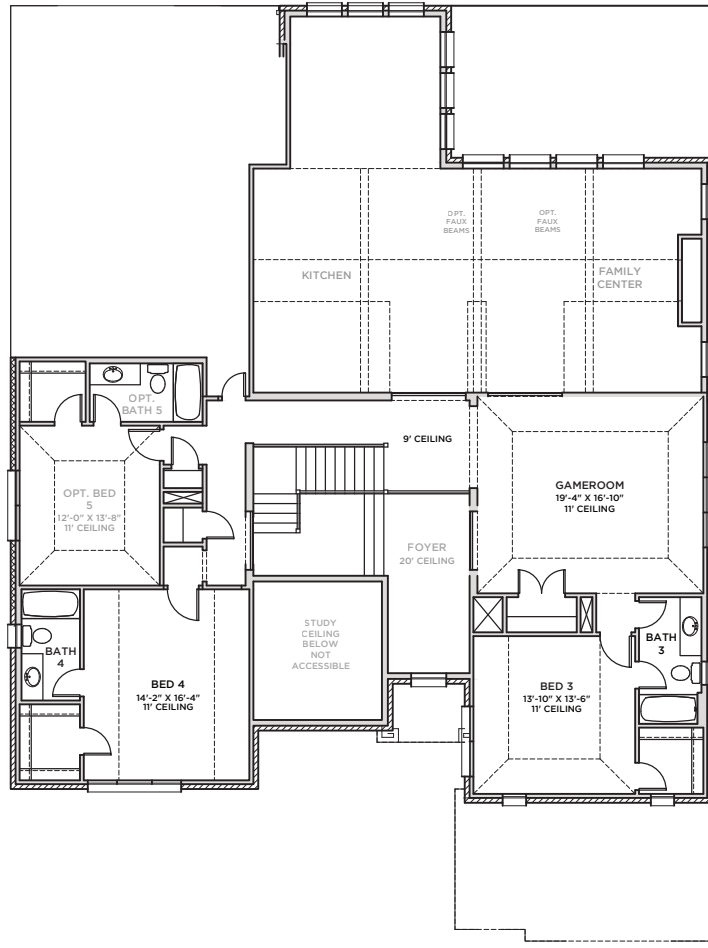
H



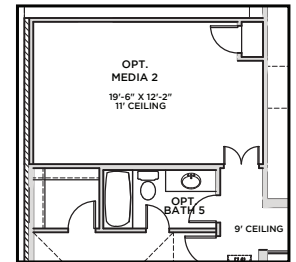
All Product including Architectural Designs, ©2000-2026, Shaddock Homes, LTD., All rights reserved. There may be existing or future design changes made in the floorplans, building products, methods, square footage, or designs used in our homes that are not reflected in our information, sales center or in our models. The materials, designs, square footages, features, and amenities shown are based upon current development plans, which are subject to change without notice. No guarantee is made that the designs, square footages, materials, features, and amenities depicted by artist's renderings or otherwise described will be built, or if built, will be of the same type, size or nature as depicted or described. All stone elevations, metal roofs, cast stone door and window headers and solid sawn cedar posts are optional, but available via change order. Front doors will match the specification sheet or chosen door upgrade. Prices and terms subject to change without notice. REVISION DATE: 1-21-25



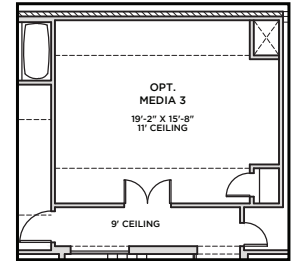
**FIRST FLOOR**



**SECOND FLOOR**



OPT. MEDIA 2  
WBEDS BATH 5



OPT. MEDIA 3  
IN LIEU OF BED 5

**DAYTON  
6421** (1.21.25)

	S.FT
First Floor	3135
Second Floor	1277
<b>Total Living Area</b>	<b>4412</b>
2 Car Garage	489
1 Car Garage	264
Covered Entry	32
Covered Patio	287
Stoop	13
Total Area	5497
<b>OPT</b>	
Bed 5/Bath 5	321

SHADDOCK HOMES