



VERANDA AT SAN MARCO

Pittsburg, CA

SEENO HOMES
— SINCE 1938 —

Floor Plans

Veranda at San Marco

RESIDENCE 1

Approx. 3,621 Sq. Ft. | 6 Beds | 4.5 Baths | 3 Car Garage | 2 Stories

Designed to suite any lifestyle, this open-concept home offers flexible living across thoughtfully connected spaces— including the Living and Dining areas, Kitchen with Nook, Family Room, and a spacious Bonus Room. Featuring six bedrooms across both levels, this layout boasts an additional upstairs bedroom suite adjacent to the Primary Suite.

RESIDENCE 2

Approx. 3,752 - 4,257 Sq. Ft. | 5 - 6 Beds | 4.5 - 5.5 Baths | 3 Car Garage | 2 Stories

Perfect for multi-generational living, Residence 2 offers generous common areas and five well-appointed bedrooms for added privacy. The home includes an upstairs Primary Suite and a downstairs Jr. Primary Suite, which can be optionally converted into a Junior Accessory Dwelling Unit (Jr. ADU).

RESIDENCE 3

Approx. 3,441 Sq. Ft. | 5 Beds | 3.5 Baths | 2 Car Garage | 2 Stories

Rich in thoughtful features, Residence 3 is designed to meet a variety of lifestyle needs. A downstairs Jr. Primary Suite offers an ideal retreat for aging parents or adult children, while the upstairs Bonus Room provides versatile space for work or play. Ample cabinetry throughout ensures abundant storage, and the Primary Suite is elevated by an elegant double-door entry.

Notes: _____

Seeno Homes is an Equal Housing Opportunity builder. Features, specifications, plans, elevations, locations, materials, prices, terms and conditions and other information are subject to change without notice or obligations. All offers are subject to final contract terms. Standard and optional specifications vary per plan type. All square footage is approximate. Not all features are available in all plans. All renderings, maps, displays and handouts are for illustration purposes only and may not accurately depict the actual condition of the item being represented. See our Sales Representative for details. Seecon Realty, Inc. CaIDRE#01971735



Included Features

Veranda at San Marco

DECORATIVE FEATURES

- 9' Ceiling Heights
- 8' Door Heights
- Satin Nickel Door Hardware Throughout
- Wood Stained Cabinets with Shaker Door Style Throughout
- Wood Stained Handrails with Wrought Iron Ballusters
- Undermount Bathroom Sinks
- Two Tone Paint Throughout
- Rounded Sheetrock Corners
- 5 1/4" Decorative Baseboards Throughout

SLEEK & SOPHISTICATED KITCHENS

- Large Kitchen Island with Ample Space for Entertaining
- Granite Slab Counter Tops at Kitchen with 1 1/2" Edge
- Undermount Kitchen Sink with Pull Down Faucet
- Stainless Steel Kitchen Appliance Package Including Cooktop, Combination Wall Oven/Microwave & Dishwasher
- Coffee Bar with Sink (Residence 2 Only)
- 2 USB Ports in Kitchen

LUXURIOUS PRIMARY SUITES

- Spacious Bedrooms with Tray Ceilings
- Ceiling Fan Pre-Wire
- Dual Bath Vanities with Solid Surface Countertops
- Elegant Free Standing Soaking Tub
- Semi-Frameless Glass Shower Enclosure with Shower Seat
- Solid Surface Shower Surrounds
- Generous Walk-In Closet with Wood Shelves

ENERGY EFFICIENCY

- **Solar Panels Included in Purchase Price of Home**
- Garage Prepped for Electric Vehicle Charging Station
- Heat Pump Water Heater
- LED Lighting Throughout
- Vacancy Sensing Lighting at Bathrooms
- Automatic Humidity Sensing Bathroom Fans
- Multizoned Air Conditioning System
- Dual Glazed Vinyl Framed Windows and Sliding Glass Doors
- Energy Efficient Cool Roof System
- Water Efficient Front Yard Landscaping with Automatic Sprinkler System

Seeno Homes is an Equal Housing Opportunity builder. Features, specifications, plans, elevations, locations, materials, prices, terms and conditions and other information are subject to change without notice or obligations. All offers are subject to final contract terms. Standard and optional specifications vary per plan type. All square footage is approximate. Not all features are available in all plans. All renderings, maps, displays and handouts are for illustration purposes only and may not accurately depict the actual condition of the item being represented. See our Sales Representative for details. Seecon Realty, Inc. CalDRE#01971735



Residence 1

Veranda at San Marco

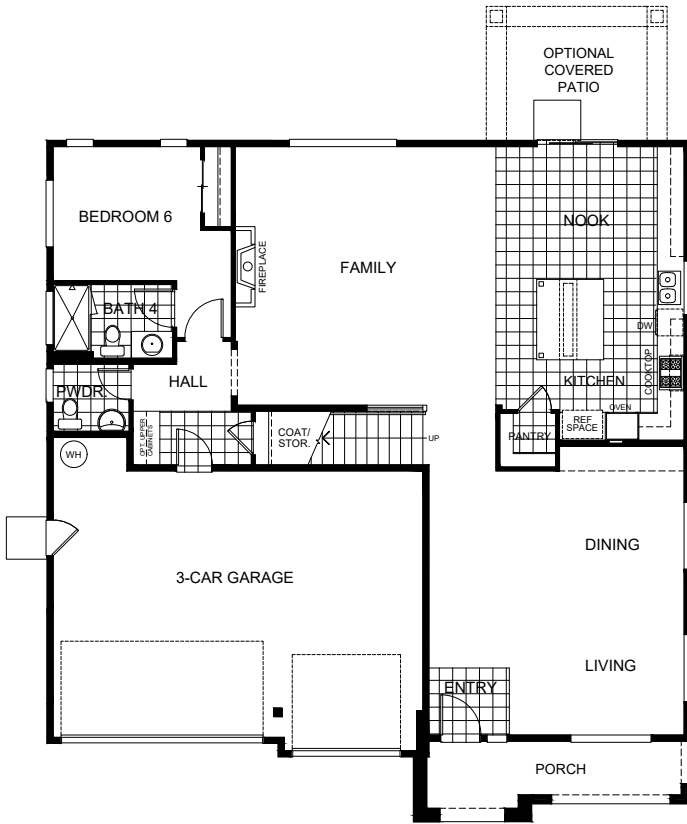
3,621
Sq. Ft.

6
Beds

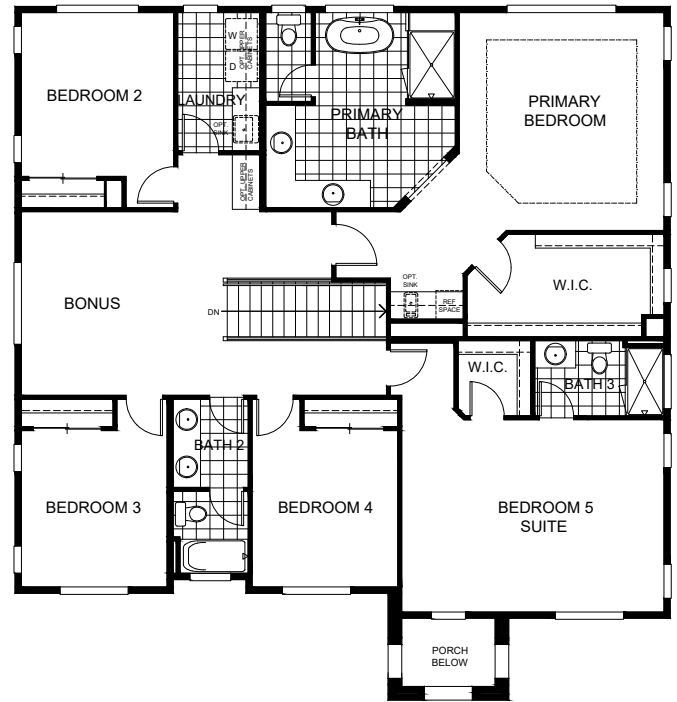
4.5
Baths

3
Car Garage

2
Story



First Floor



Second Floor



Elevation A



Elevation B

Seeno Homes is an Equal Housing Opportunity builder. Features, specifications, plans, elevations, locations, materials, prices, terms and conditions and other information are subject to change without notice or obligations. All offers are subject to final contract terms. Standard and optional specifications vary per plan type. All square footage is approximate. Not all features are available in all plans. All renderings, maps, displays and handouts are for illustration purposes only and may not accurately depict the actual condition of the item being represented. See our Sales Representative for details. Seecon Realty, Inc. CalDRE#01971735



Residence 2

Veranda at San Marco

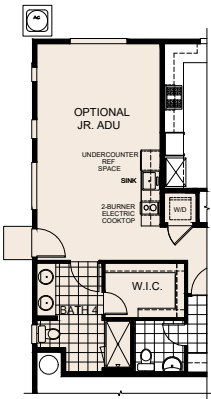
3,752 - 4,257
Sq. Ft.

5 - 6
Beds

4.5 - 5.5
Baths

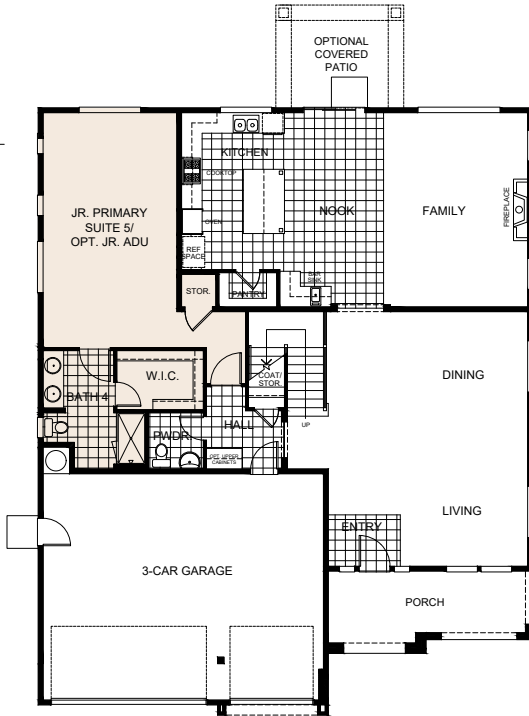
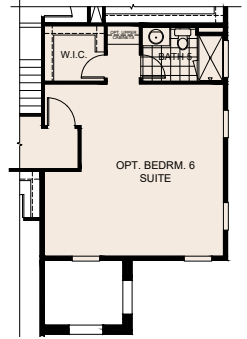
3
Car Garage

2
Story



Optional Jr. ADU
in lieu of
Jr. Primary Suite

Optional Bed 6 Suite
in lieu of
Open to Below



First Floor



Second Floor



Elevation A



Elevation B

Seeno Homes is an Equal Housing Opportunity builder. Features, specifications, plans, elevations, locations, materials, prices, terms and conditions and other information are subject to change without notice or obligations. All offers are subject to final contract terms. Standard and optional specifications vary per plan type. All square footage is approximate. Not all features are available in all plans. All renderings, maps, displays and handouts are for illustration purposes only and may not accurately depict the actual condition of the item being represented. See our Sales Representative for details. Seecon Realty, Inc. CalDRE#01971735



Residence 3

Veranda at San Marco

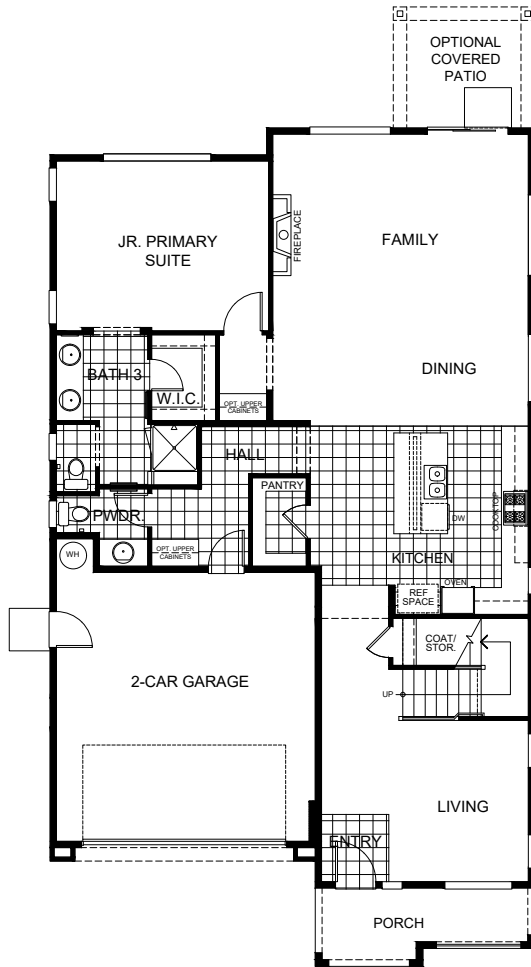
3,441
Sq. Ft.

5
Beds

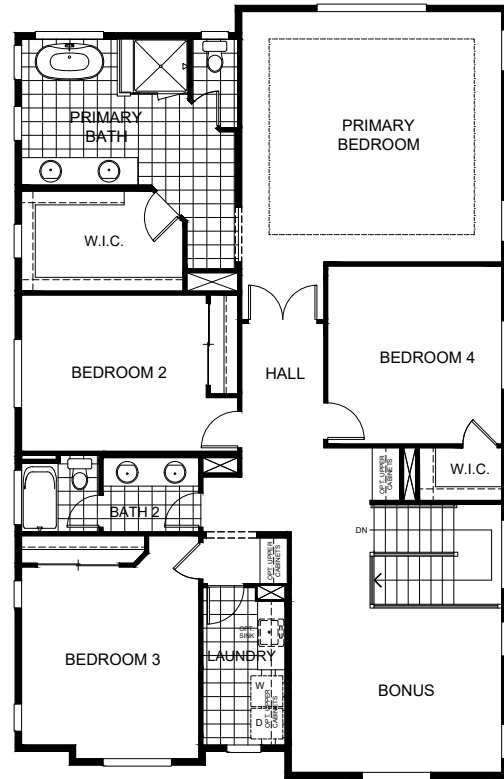
3.5
Baths

2
Car Garage

2
Story



First Floor



Second Floor



Elevation A

Seeno Homes is an Equal Housing Opportunity builder. Features, specifications, plans, elevations, locations, materials, prices, terms and conditions and other information are subject to change without notice or obligations. All offers are subject to final contract terms. Standard and optional specifications vary per plan type. All square footage is approximate. Not all features are available in all plans. All renderings, maps, displays and handouts are for illustration purposes only and may not accurately depict the actual condition of the item being represented. See our Sales Representative for details. Seecon Realty, Inc. CaLDRE#01971735



Site Plan

Veranda at San Marco



Legend

Residence 1

± 3,621 Sq. Ft. | 2 Story
6 Beds | 4.5 Baths
3 Car Garage

Residence 2

± 3,752 - 4,257 Sq. Ft. | 2 Story
5 - 6 Beds | 4.5 - 5.5 Baths
3 Car Garage

Residence 3

± 3,441 Sq. Ft. | 2 Story
5 Beds | 3.5 Baths
2 Car Garage

Seeno Homes is an Equal Housing Opportunity builder. Features, specifications, plans, elevations, locations, materials, prices, terms and conditions and other information are subject to change without notice or obligations. All offers are subject to final contract terms. Standard and optional specifications vary per plan type. All square footage is approximate. Not all features are available in all plans. All renderings, maps, displays and handouts are for illustration purposes only and may not accurately depict the actual condition of the item being represented. See our Sales Representative for details. Seecon Realty, Inc. CalDRE#01971735



Veranda at San Marco

Sales Office:

3304 Vista Meadows Drive
Pittsburg, CA 94565

(925) 261-0711 | SeenoHomes.com
veranda@seeconrealty.com

