

DESIGN

BOYD - 5230



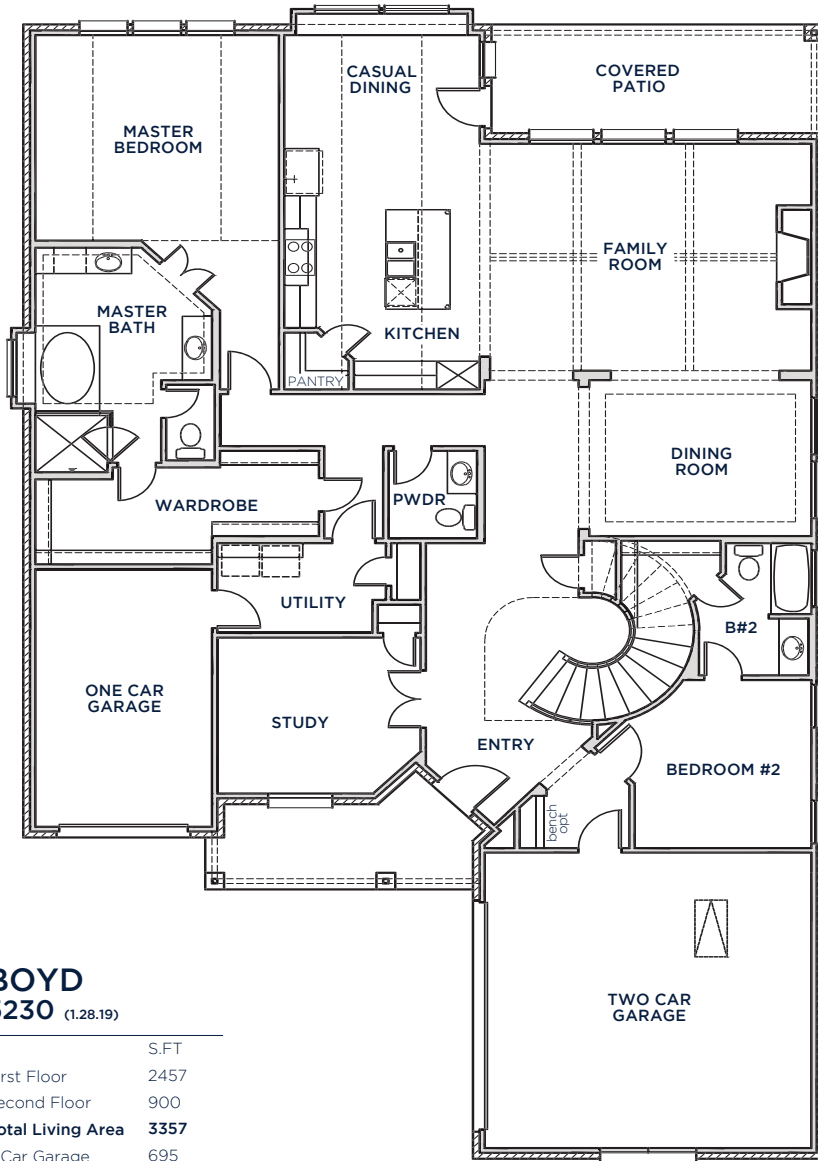
A



B



All Product including Architectural Designs, ©2000-2023, Shaddock Homes, LTD., All rights reserved. There may be existing or future design changes made in the floorplans, building products, methods, square footage, or designs used in our homes that are not reflected in our information, sales center or in our models. The materials, designs, square footages, features, and amenities shown are based upon current development plans, which are subject to change without notice. No guarantee is made that the designs, square footages, materials, features, and amenities depicted by artist's renderings or otherwise described will be built, or if built, will be of the same type, size or nature as depicted or described. All stone elevations, metal roofs, cast stone door and window headers and solid sawn cedar posts are optional, but available via change order. Front doors will match the specification sheet or chosen door upgrade. Prices and terms subject to change without notice. **REVISION DATE: 1.28.2019**

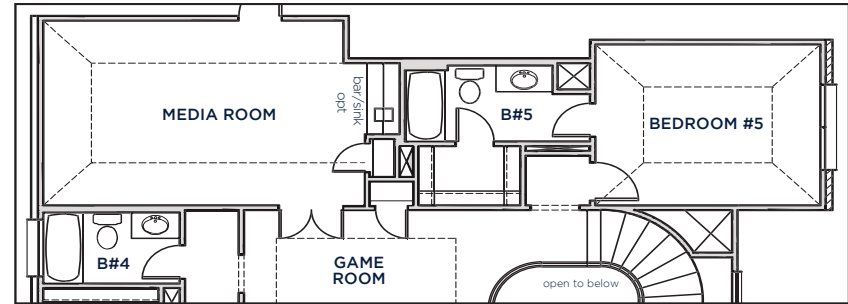


FIRST FLOOR

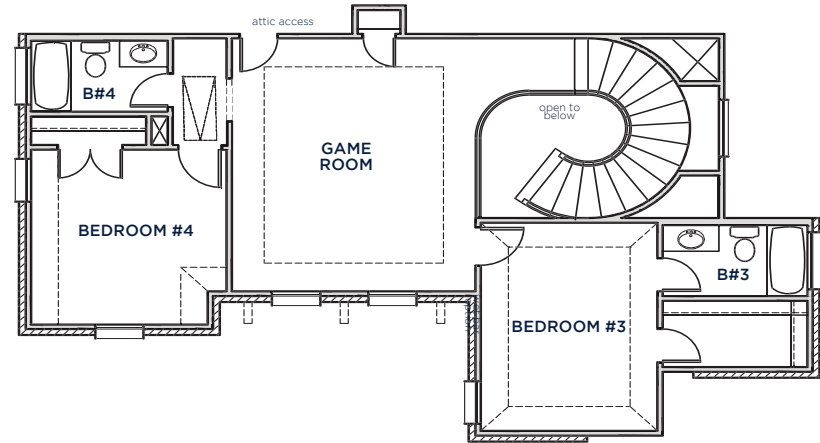
**BOYD
5230** (1.28.19)

	S.FT
First Floor	2457
Second Floor	900
Total Living Area	3357
3 Car Garage	695
Porch	103
Patio	158
Total Area	4313
Options	
Media Room	292
5th Bed & 5th Bath	301

SHADDOCK HOMES



MEDIA ROOM, BEDROOM 5 & BATH 5 OPTION
*Can be purchased individually



SECOND FLOOR