

# DESIGN

## OAKWOOD - 5421



A



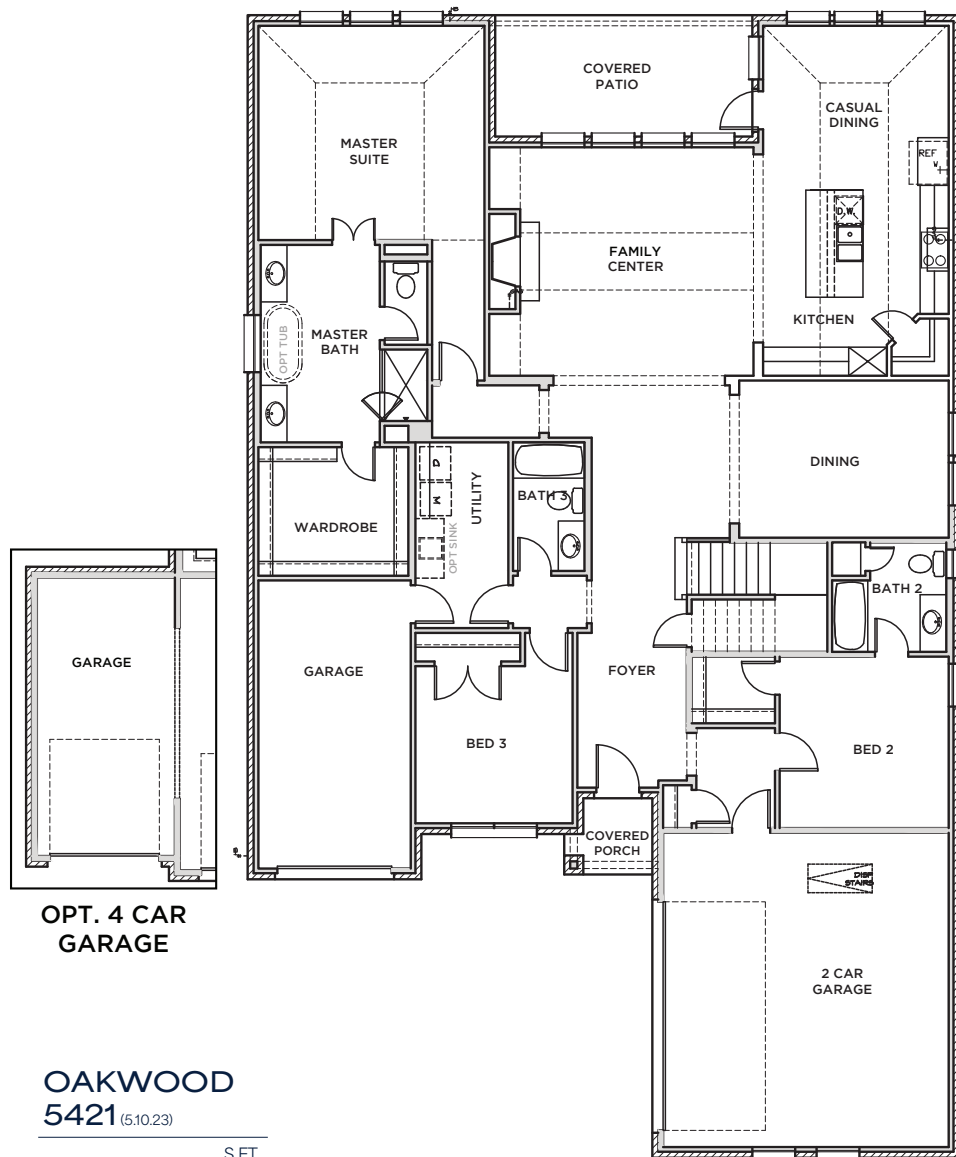
B



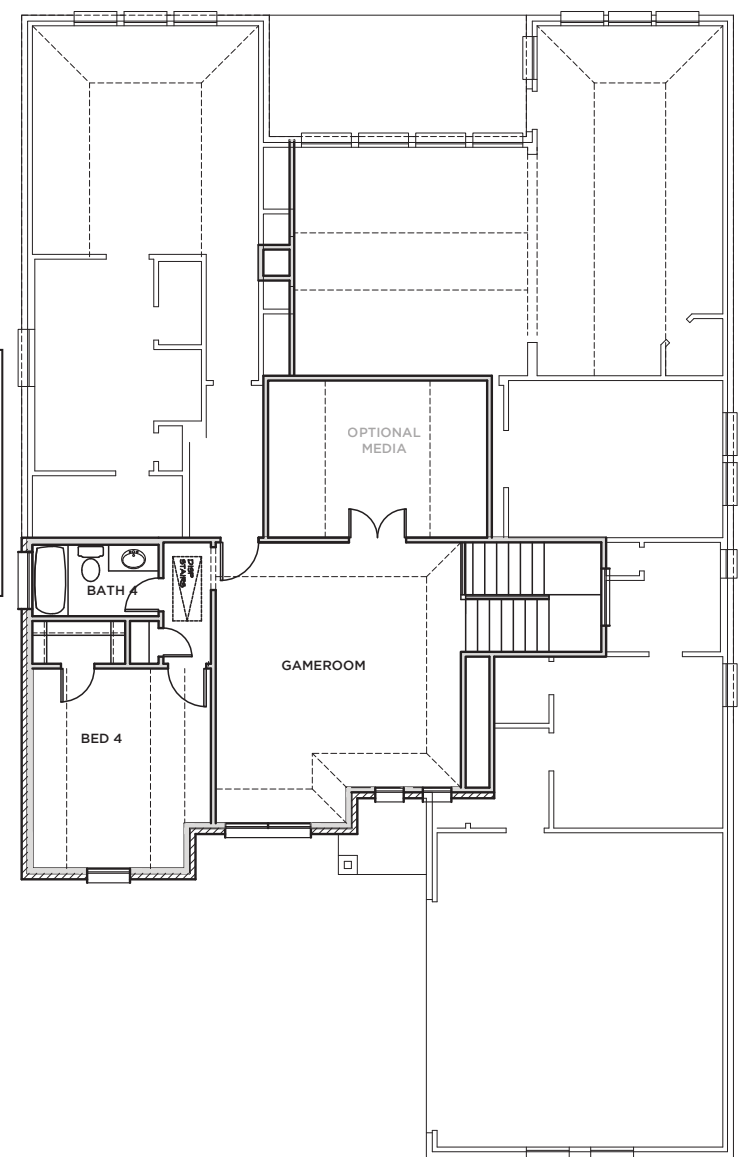
C



All Product including Architectural Designs, ©2000-2025, Shaddock Homes, LTD., All rights reserved. There may be existing or future design changes made in the floorplans, building products, methods, square footage or designs used in our homes that are not reflected in our information, sales center or in our models. The materials, designs, square footages, features, and amenities shown are based upon current development plans, which are subject to change without notice. No guarantee is made that the designs, square footages, materials, features, and amenities depicted by artist's renderings or otherwise described will be built, or if built, will be of the same type, size or nature as depicted or described. All stone elevations, metal roofs, cast stone door and window headers and solid sawn cedar posts are optional, but available via change order. Front doors will match the specification sheet or chosen door upgrade. Prices and terms subject to change without notice. REVISION DATE: 5.10.23



FIRST FLOOR



SECOND FLOOR

## OAKWOOD 5421 (5.10.23)

First Floor	S.FT
Second Floor	2488
<b>Total Living Area</b>	<b>665</b>
3 Car Garage	<b>3153</b>
Covered Entry	730
Covered Patio	30
Total Area	153
	4066

<b>OPTIONAL</b>	
Media Room	181

SHADDOCK HOMES