



# AVONLEY HOMES

2302 RIVERCANE COURT



GREENS PRAIRIE RESERVE NEIGHBORHOOD

4 BDRM | 4 BATH | 2475 SF

The “Orchid” makes her debut as a showstopper in Greens Prairie Reserve. Where every corner exudes charm and practicality, this plan features a seamless connected living space and a sprawling L-shaped kitchen. Illuminated by an array of windows that invite natural light to the space, this plan showcases the perfect kitchen that boasts a sizable eat-in island, perfect for casual gatherings or culinary adventures.

Entertain with grace in the separate dining area, providing a welcoming ambiance for hosting guests while showcasing the beauty and functionality of this remarkable home. Every detail has been meticulously crafted to evoke admiration and evoke a sense of belonging. Prepare to be captivated by the allure of the “Orchid” plan and embrace the ultimate in comfort and style. Welcome home to Avonley.

**FEATURES:**

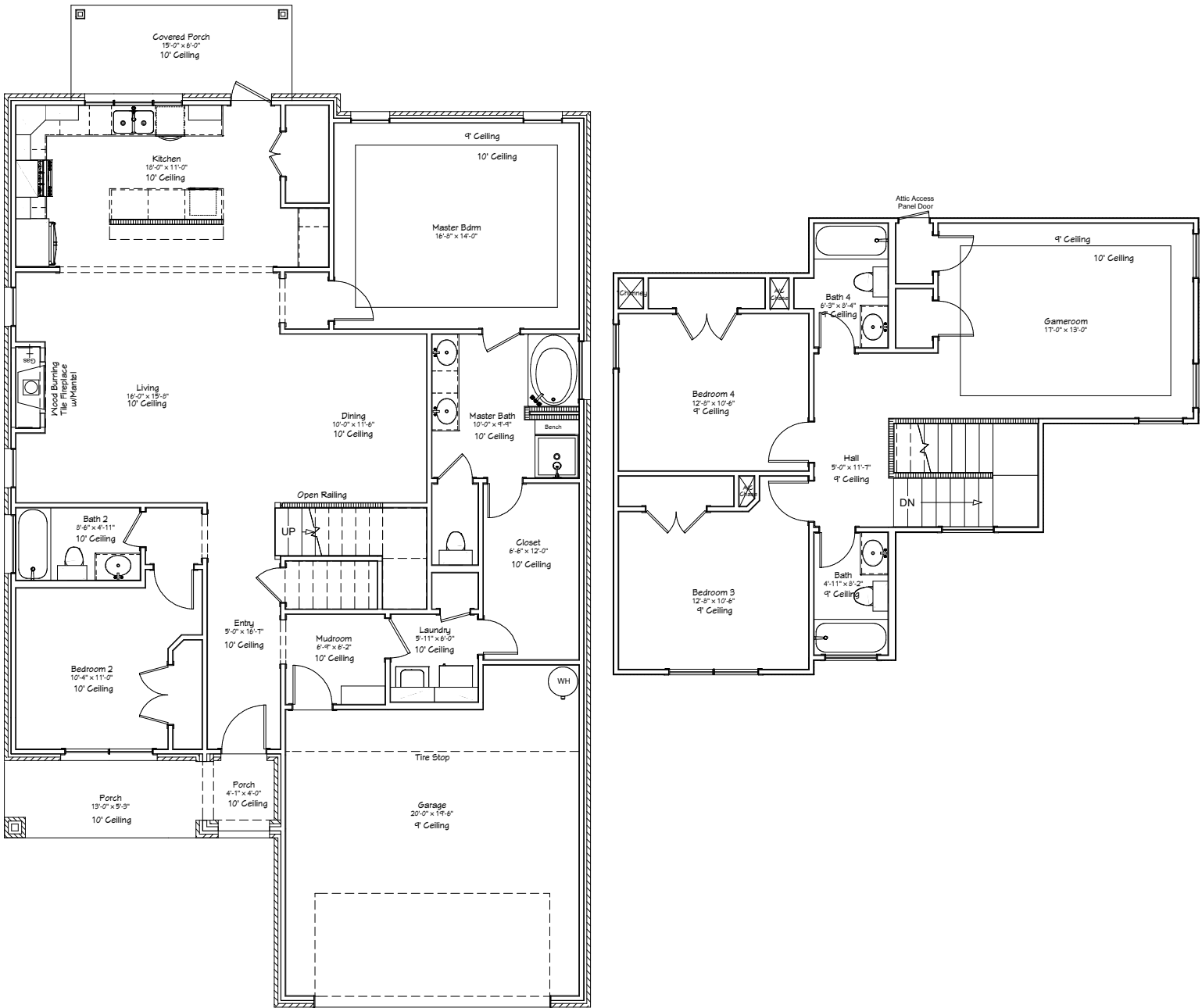
Mudroom Cabinetry | Granite Countertops | Luxury Vinyl Plank Flooring  
Wood Burning Fireplace | Covered Back Porch | Stainless Appliances

## COME HOME TO AVONLEY



Avonley Homes  
979-321-7200  
info@avonleyhomes.com

## 2302 RIVERCANE COURT



4 BDRM | 4 BATH | 2475 SF

[WWW.AVONLEYHOMES.COM](http://WWW.AVONLEYHOMES.COM)

COME HOME TO AVONLEY | Avonley Homes is committed to giving families the home of their dreams. From simple comfort to expert craftsmanship, we promise you will be proud to call our house your home.