

# Hudson



1,601 sq ft



3 bed



2 bath



a

mountain cottage



b

coastal craftsman



e

modern tudor



f

modern

## FEATURES YOU'LL LOVE ABOUT THIS HOME

master suite with a walk-in closet  
attached to the utility room

options for a desk nook  
and fireplace

strategically placed windows  
to maximize natural light

modified open floor plan with a tucked-away  
kitchen to reduce noise to and from other areas

oversized utility/mud room with cabinet storage  
and counterspace along with a "drop-zone"



**IDEAL**  
homes | neighborhoods®



### HERE'S HOW WE DEVELOP EVERY IDEAL FLOOR PLAN:

*We consider everything ...*

- sight lines & traffic flow
- furniture placement
- usable space
- architectural details
- window placement & size for optimal lighting
- function & low maintenance needs

405.364.1152

[www.idealhomes.com](http://www.idealhomes.com)



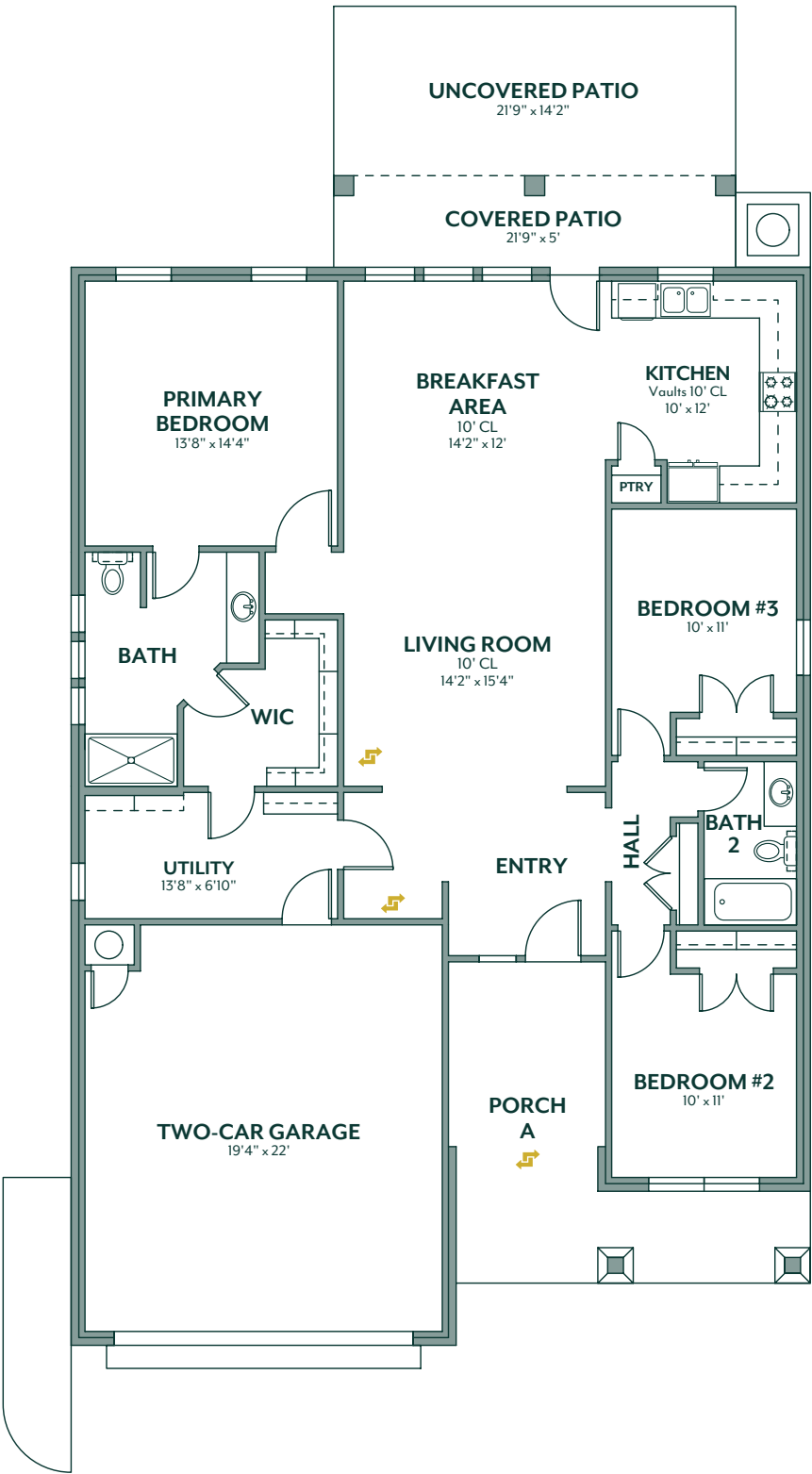
1,601 sq ft



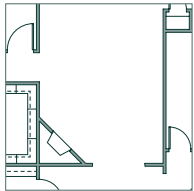
3 bed



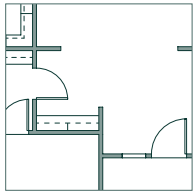
2 bath



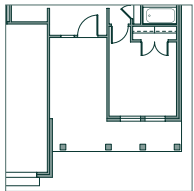
customize this plan



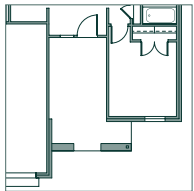
fireplace



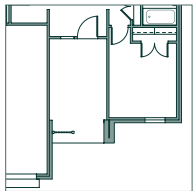
desk nook



porch b



porch e



porch f



Scan the code to view a **photo gallery & included features** for the Hudson floor plan