



283 E. CONCORD FARM LANE  
DRAPER, UTAH



CONCORD  
LANE

## LOT 2 | WYMAN



5 Bedrooms



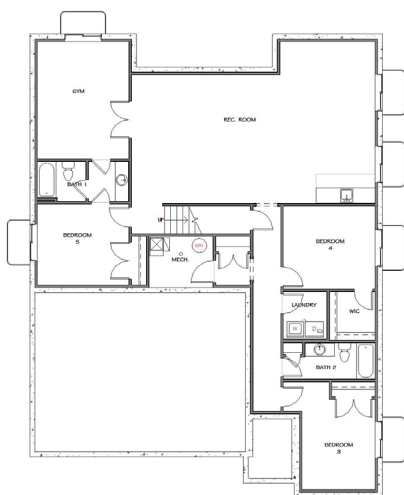
4 Bathroom



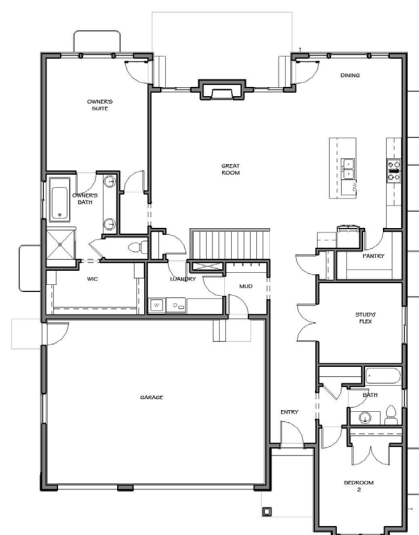
3 Car Garage



3818 SF Total



Basement



Main Floor

# EXTERIOR COLOR PACKAGE



## ROOFING

IKO Cambridge:  
Dual Black



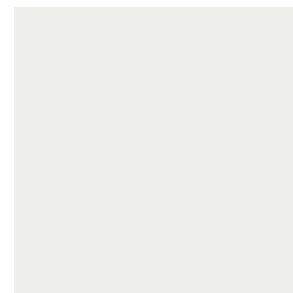
## SOFFIT/FASCIA

Ply Gem Mastic:  
Black



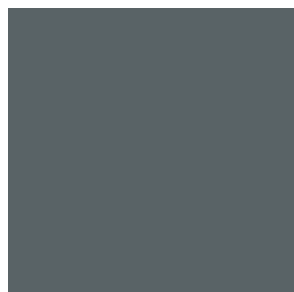
## STONE COLOR

HARRISTONE  
Austin Tumbled



## STUCCO COLOR

SW7006:  
Extra White



## LAP SIDING, BOARD & BATTEN COLOR

SW6236:  
Grays Harbor



## FRONT DOOR

SW6991:  
Black Magic



## RAIN GUTTERS

Black



## GARAGE DOOR COLOR

Flat Panel:  
Black

For details on the interior package, please request an Interior Package booklet from the agents.

The information provided is for illustrative purposes only and may not be exact. All prices, materials, measurements, images, and renderings are subject to change without notice.

**primed**<sup>RE</sup>  
REAL ESTATE

134 W. 13100 S., Suite 200  
Draper, Utah 84020

[www.primedre.com](http://www.primedre.com)

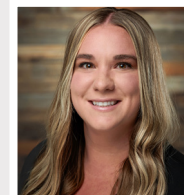
Call our preferred lender for details on incentives,  
rate, and borrower specific qualifications.  
Jordan Duckett: (801) 636-9069 with Security National Mortgage.



## SANDY EWING

ASSOCIATE BROKER/  
SALES CONSULTANT

(801) 652-4424  
[sandyewing@primedre.com](mailto:sandyewing@primedre.com)



## DESI EDDY

NEW HOME  
SALES CONSULTANT

(801) 574-9050  
[desieddy@primedre.com](mailto:desieddy@primedre.com)