



Cute as a button and so practical! The Juniper Cottage features a huge great room with plenty of space for a desk nook for work-at-home options. The private owner's suite is extraordinarily roomy with an extra-large walk-in closet. And for a nice bonus: a private patio for outdoor living!

### Features:

- Nine foot first floor ceiling height
- Open floor plan
- Kitchen features stainless steel appliances and large island
- Owner's Suite features walk-in closet and private bath
- Main floor Laundry Room and Powder Room
- Front Porch
- Eleven foot by eleven foot concrete patio

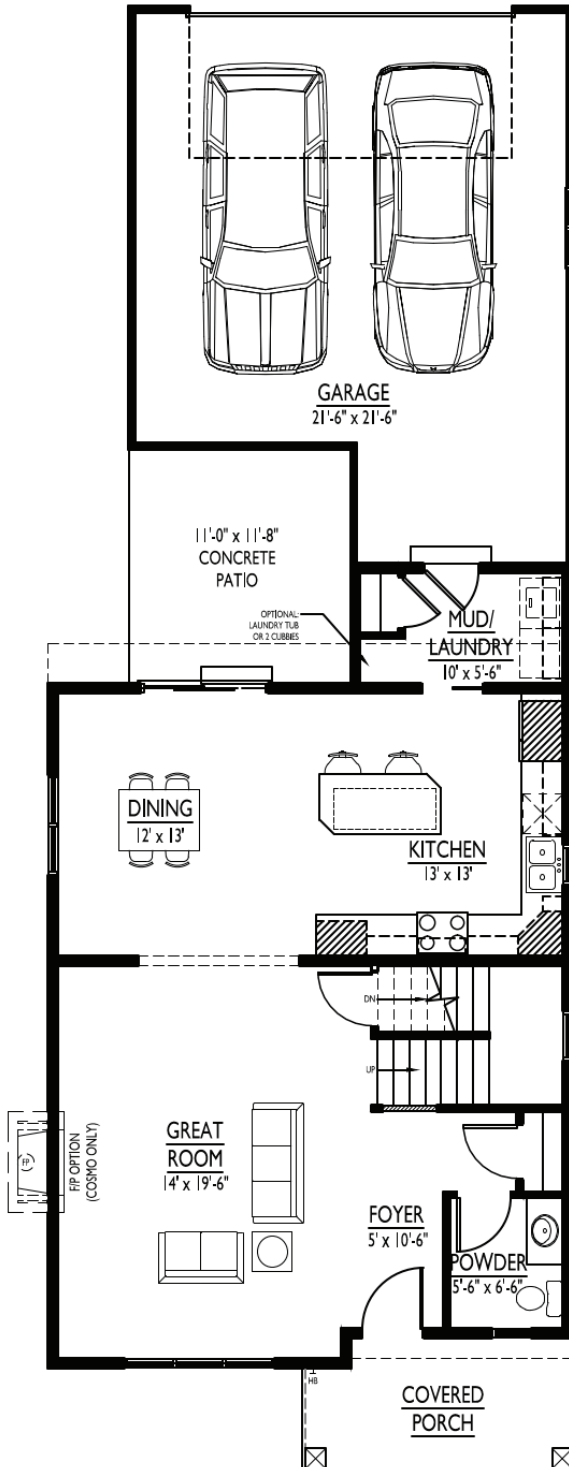
### Optional Features:

- Eight foot nine inch basement foundation walls
- Fireplace in Great Room
- Tile shower in Owner's Suite Bathroom
- Finished lower level
- Solid surface countertops in Kitchen

Encore Homes reserves the right to make changes without notice. This information is not guaranteed and is subject to verification.

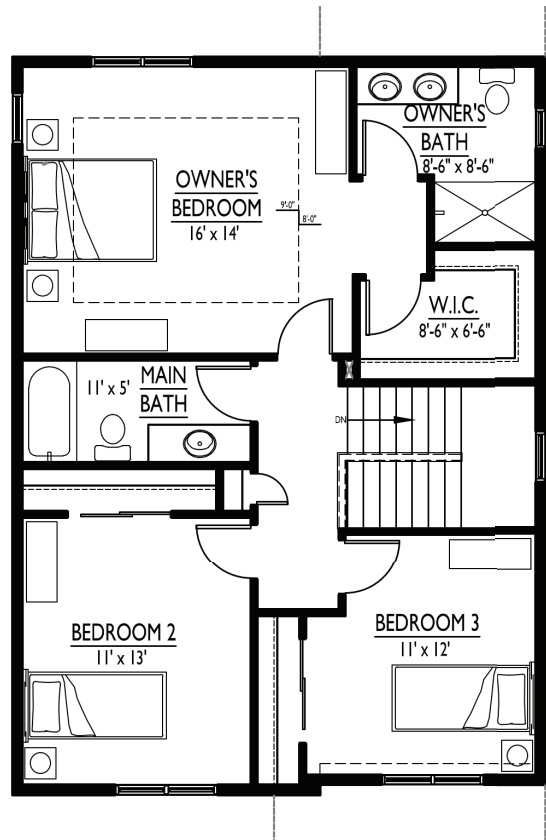
**1<sup>st</sup> Floor**

934 SF



**2<sup>nd</sup> Floor**

931 SF



*Illustrated dimensions are approximations, simplified for this drawing. Final construction dimensions may vary from numbers shown here.*