

THE ARBOR SERIES

ST. JAMES

Two Story | 2 or 3 Bedrooms | 2 Full Baths | 1 Half Bath



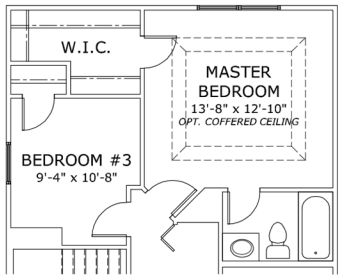
TRADITIONAL



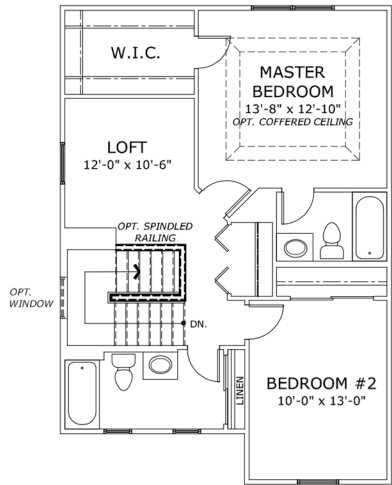
CLASSIC



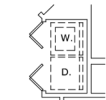
COLONIAL



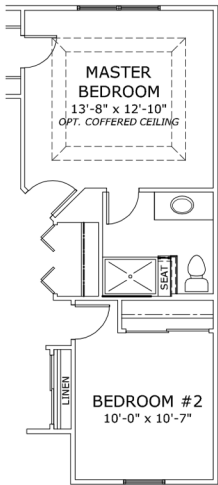
OPT. BEDROOM #3



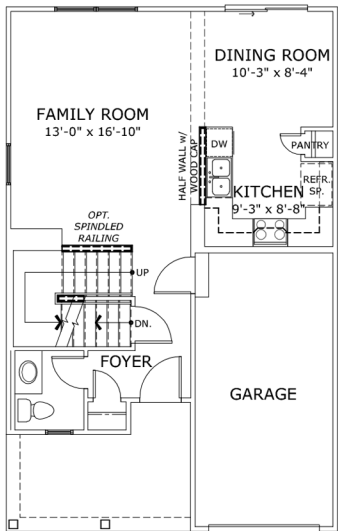
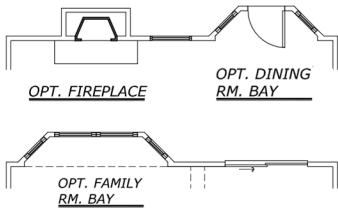
SECOND FLOOR PLAN



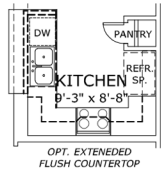
OPT. 2nd FLOOR LAUNDRY



OPT. LUXURY MASTER BATH



FIRST FLOOR PLAN



OPT. EXTENDED FLUSH COUNTERTOP

BUILT BY **McBRIDE & SON HOMES, INC.**

* Due to the evolutionary changes in our design improvements process, there may be variations between these plans and the "as built" floor plans, including layout and room sizes, square footage of the residence itself, and the location and size of doors, windows, openings, door swings, and other building components, including the location of posts and beams.

McBride & Son Homes, in its sole and absolute discretion, reserves the right to substitute materials of comparable quality.

These plans are the sole and absolute property of McBride & Son Homes, Inc. The use or copying of these plans, without the express written consent of McBride & Son Homes, is prohibited by law. McBride & Son Homes may take immediate legal action against any unauthorized user of these plans.

