

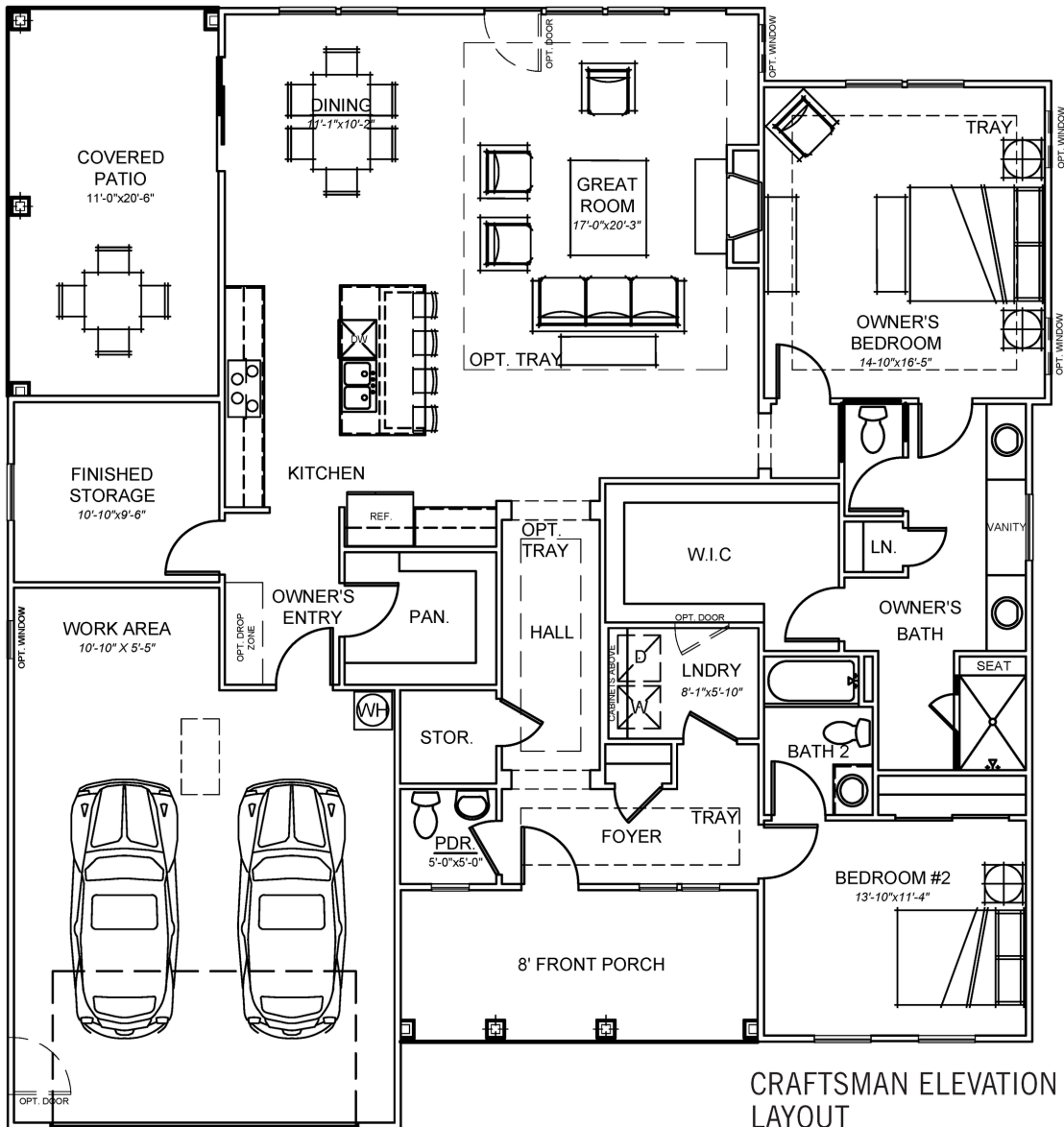
THE LEXINGTON

CARRIAGE HOME // 2,092 SF

2 Bedroom, 2.5 Bath, Front Porch, Covered Patio

This Carriage Home features all of your must haves and more. Private entry and covered patio. Bright, airy interiors. Large walk-in closets with plenty of storage. High-style kitchen and bath designs. Four flexible spaces for you to mix and match for your lifestyle.

A
B
C
D

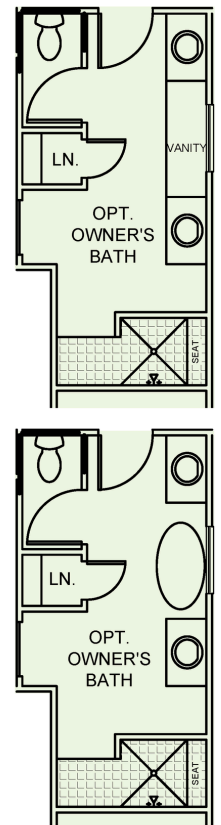


MAIN LEVEL: 2,092 SF

CRAFTSMAN ELEVATION LAYOUT

CRAFTSMAN ELEVATION WINDOWS

BATH OPTIONS



THE LEXINGTON

FLEX OPTIONS

Your 5:00pm Room. Your Dog's Day Pet Room. Shelf Control Room. Your Double Duty Tandem Garage. Farm-To-Kitchen Room. Your Exercise Room. Your Garden Shed. Your whatever you want it to be room. Mixed and match to your personality's content.

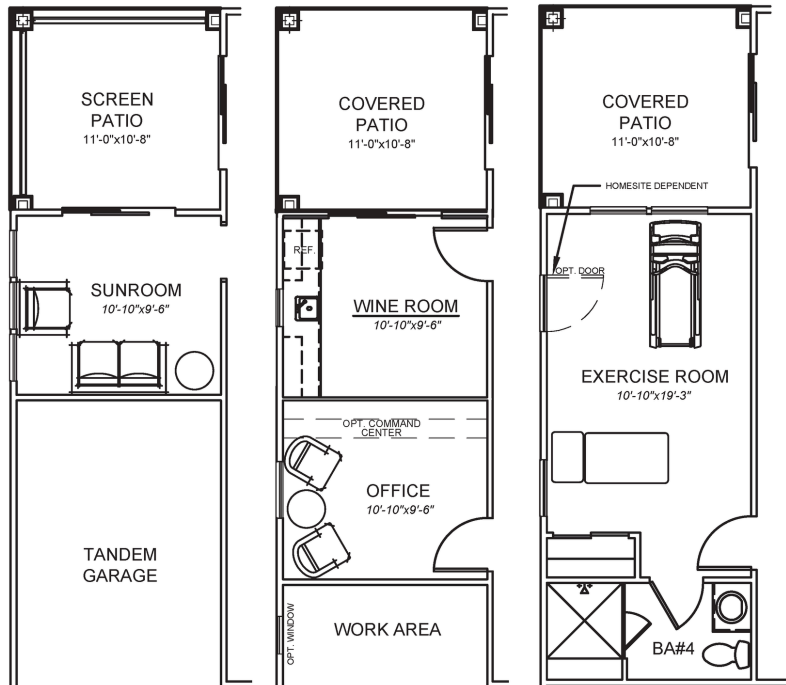


A

B

C

D

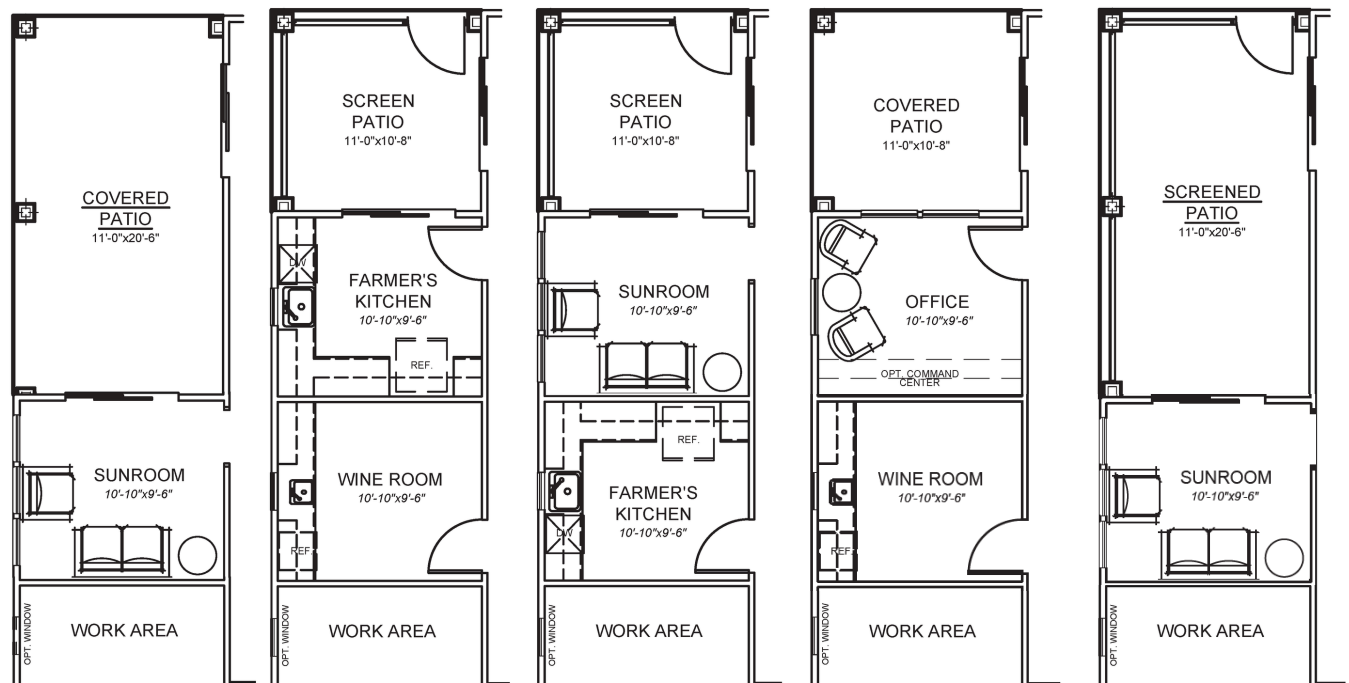


A

B

C

D



THE LEXINGTON WITH LOFT

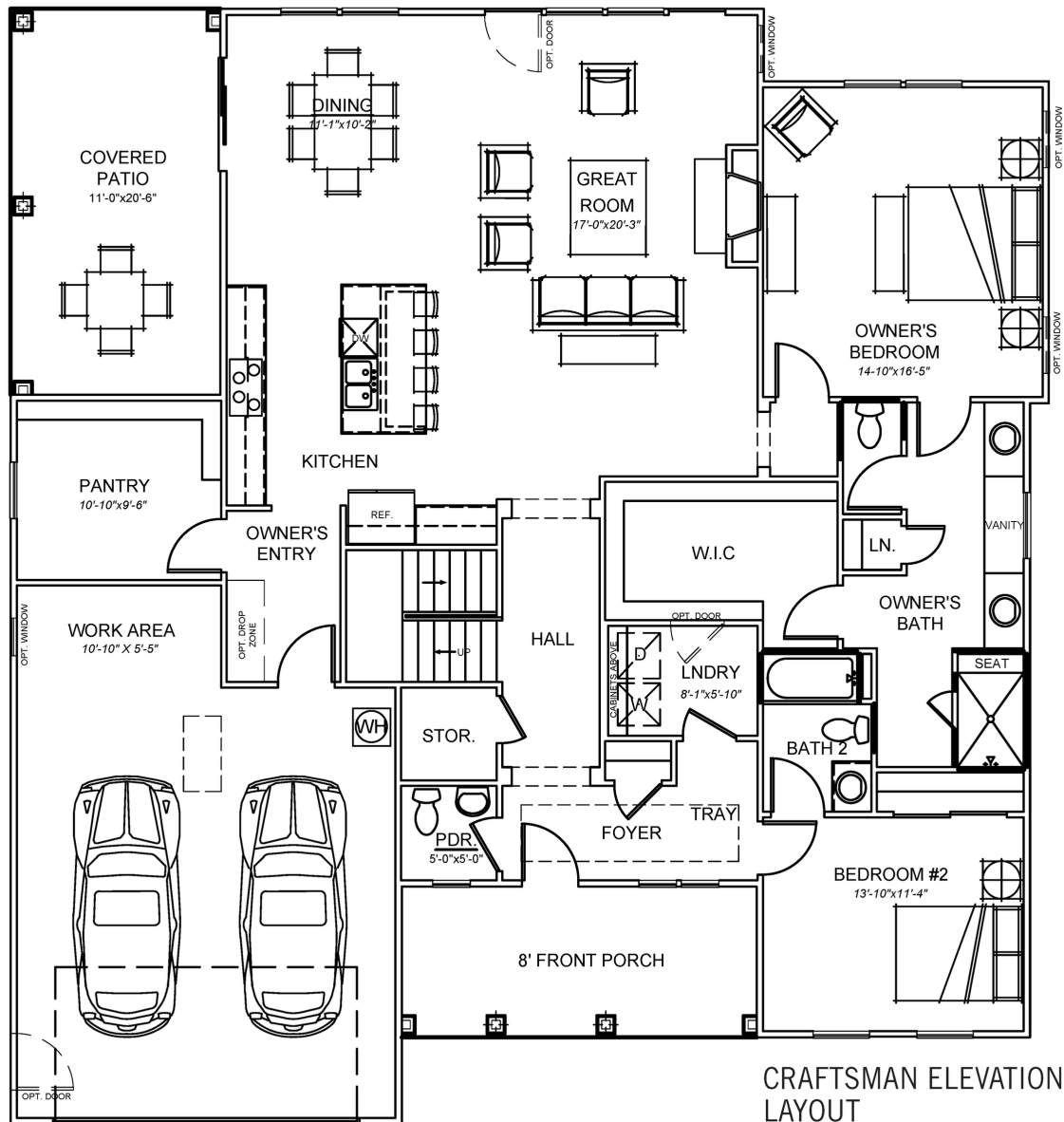
CARRIAGE HOME // 3,109 SF

3 Bedroom, 3.5 Bath, Front Porch, Covered Deck & Patio

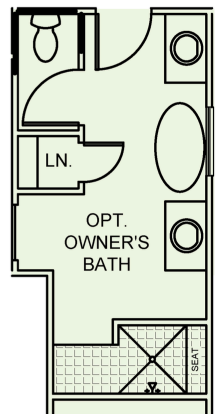
LOFT OPTION: 1,017 SF

This Carriage Home features all of your must haves and more for those who want a little extra space. Private entry and covered deck and patio. Bright, airy interiors. Large walk-in pantry and closets with plenty of storage. High-style kitchen and bath designs. Four flexible spaces for you to mix and match for your lifestyle.

A
B
C
D



BATH OPTIONS



MAIN LEVEL: 2,092 SF

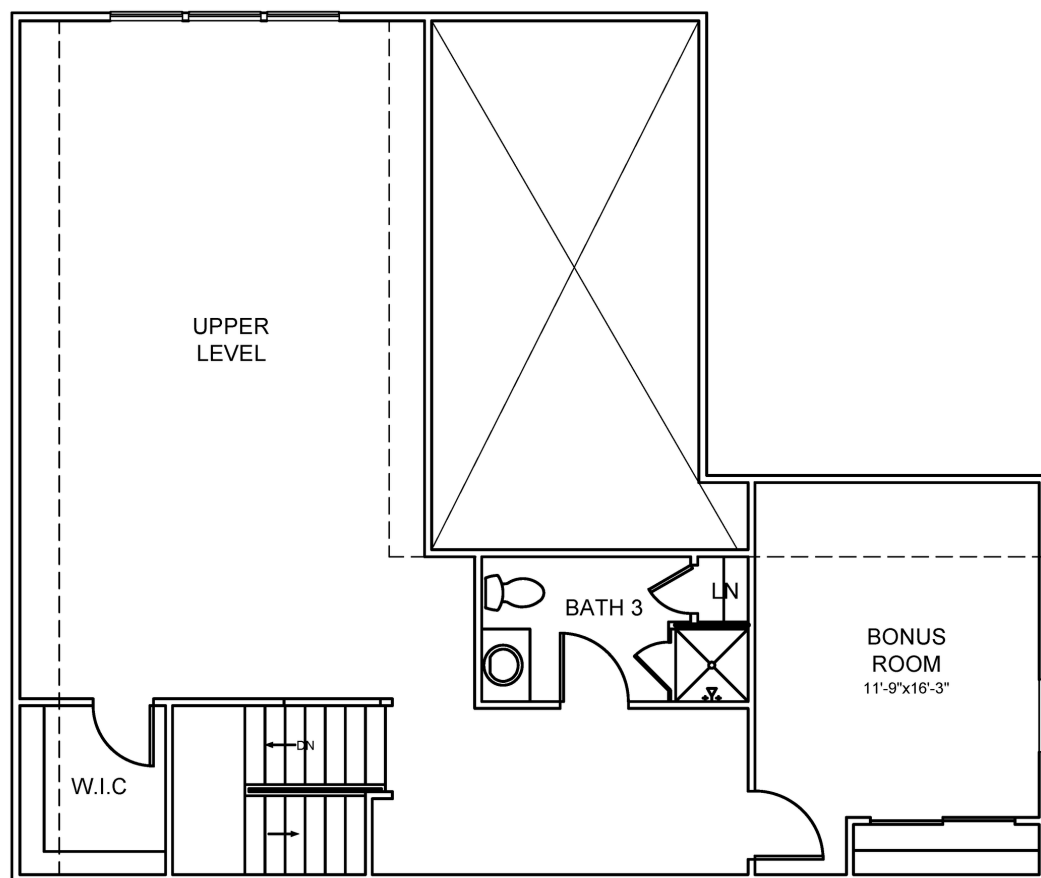
*Tray ceiling is only available in the foyer with the Loft Level

CRAFTSMAN ELEVATION WINDOWS

THE LEXINGTON WITH LOFT

Choose a Loft Level for extra living and entertaining. Create a second master sweet with an additional bedroom and full bath. Add an art studio or music lounge. Think game room, workshop, wine tasting room and more! This home has all the space you need to live life to the fullest.

LOFT LEVEL: 1,017 SF



*NO TRAY IN HALL, OWNER'S BEDROOM, OR GREAT ROOM