

CAMELLIA

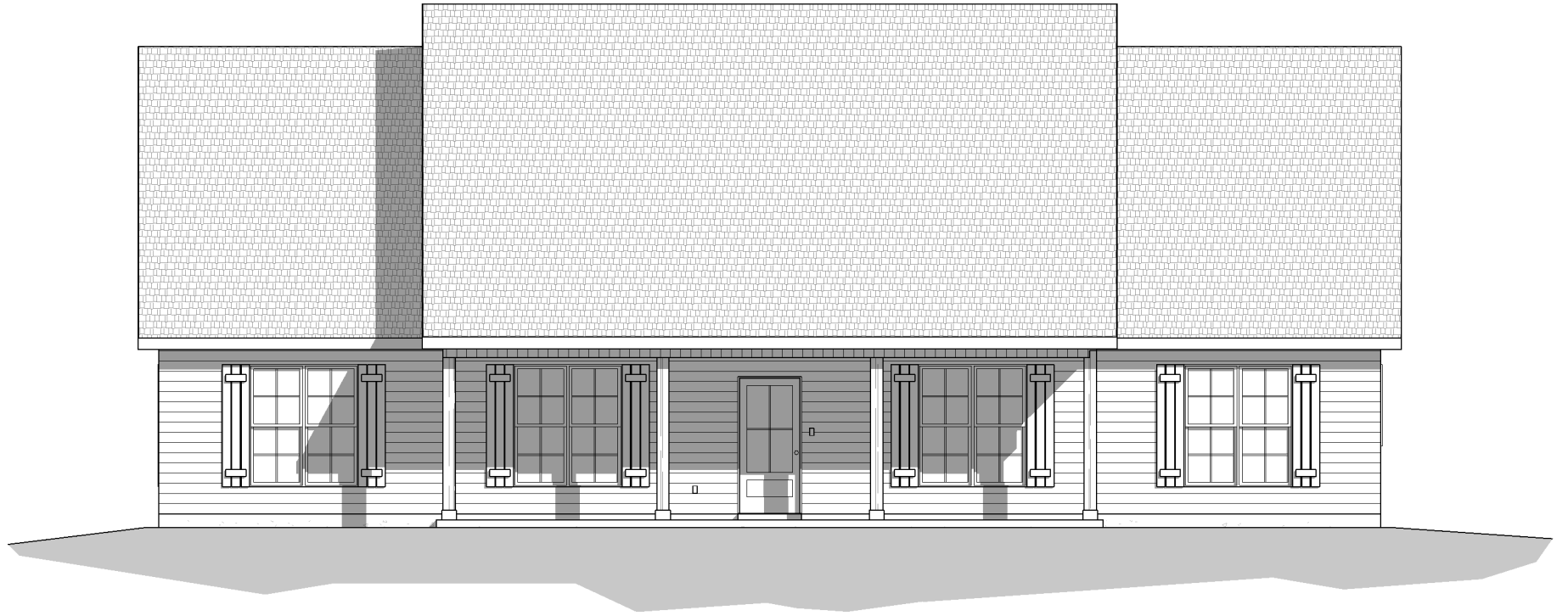
BAYOU

MANUEL



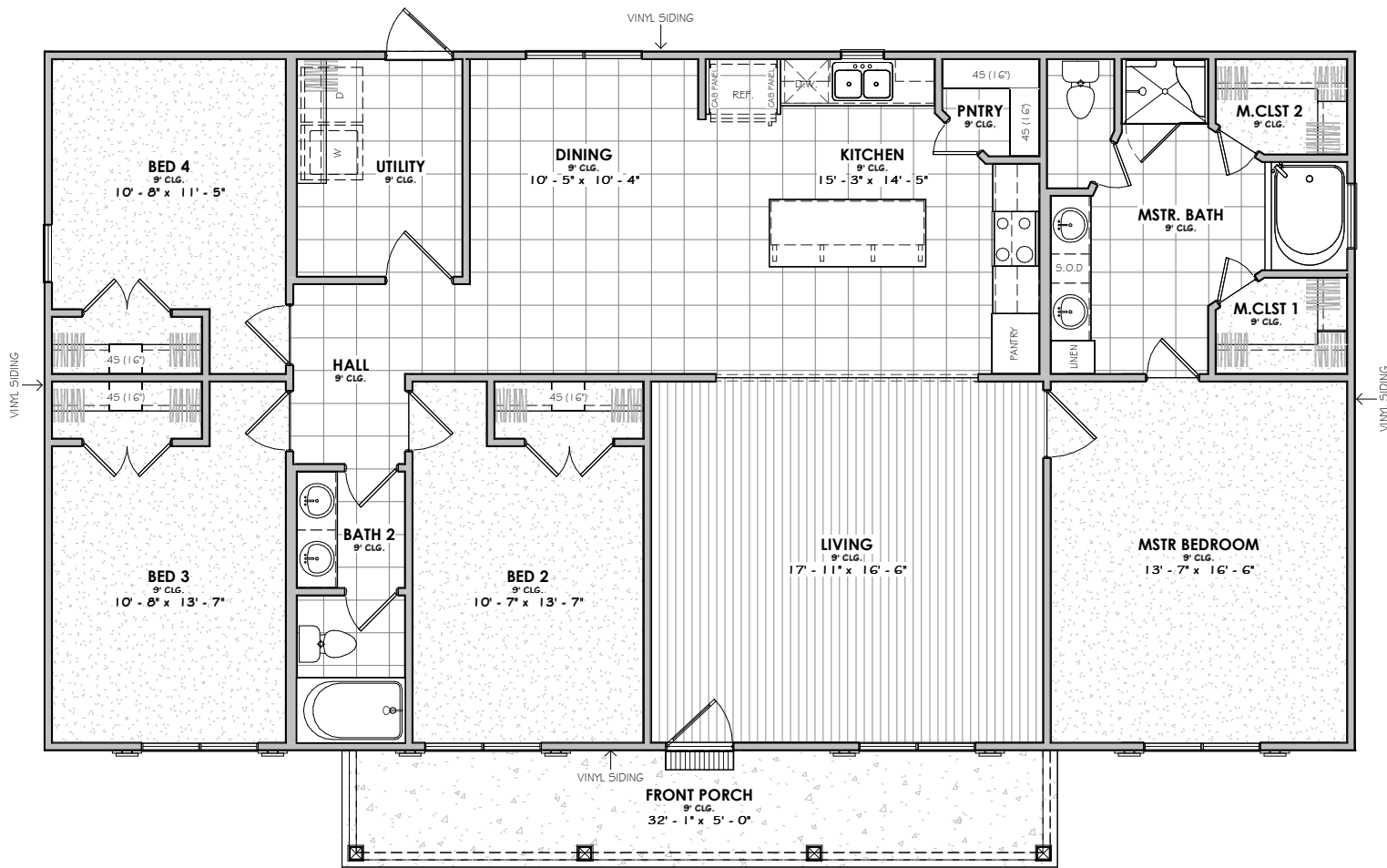
BUILDERS

4 BEDROOM | 2 BATH



FRONT ELEVATION

9'-1" PLATE HEIGHT - 9' CLG.
10:12 ROOF PITCH



FLOOR PLAN

OVERALL DIMENSIONS

60' - 0" WIDTH X 37' - 4" DEPTH

SQUARE FOOTAGE	
Livable	
1st Floor	1920 SF
	1920 SF
Non-Livable	
Porch	160 SF
	160 SF
Total Under Roof	
Under Roof	2080 SF
	2080 SF
Uncovered	
Uncovered	30 SF
	30 SF

