



CALIBER HOMES

CHARACTER REDEFINED

# 1028 Woodland Rd

Offered at

## \$938,760



# The Reagan

ELEVATION "C"

## PROPERTY FEATURES:



4 Bedroom



3.5 Bathroom



3 Car



3361 Sq Ft



Full Foam Insulation

## ABOUT:

"We have found, in our country, that when people have the right to make decisions as close to home as possible, they usually make the right decisions."

-Ronald Reagan

Welcome to The Reagan, a beautifully crafted modern farmhouse offering 3361 square feet of luxurious living space. With 4 bedrooms and 3.5 bathrooms, this home is designed to meet the needs of modern families who appreciate both style and functionality.

## CONTACT DETAILS:



817-790-9559



[sales@caliberhomestx.com](mailto:sales@caliberhomestx.com)



[www.caliberhomestx.com](http://www.caliberhomestx.com)

All plans and elevations are subject to change without prior notice. All Caliber Homes floor plans & elevations are copyrighted. Caliber Homes will enforce copyright laws to their fullest extent. All plan numbers are approximations of square footage and may vary with alternate elevations.

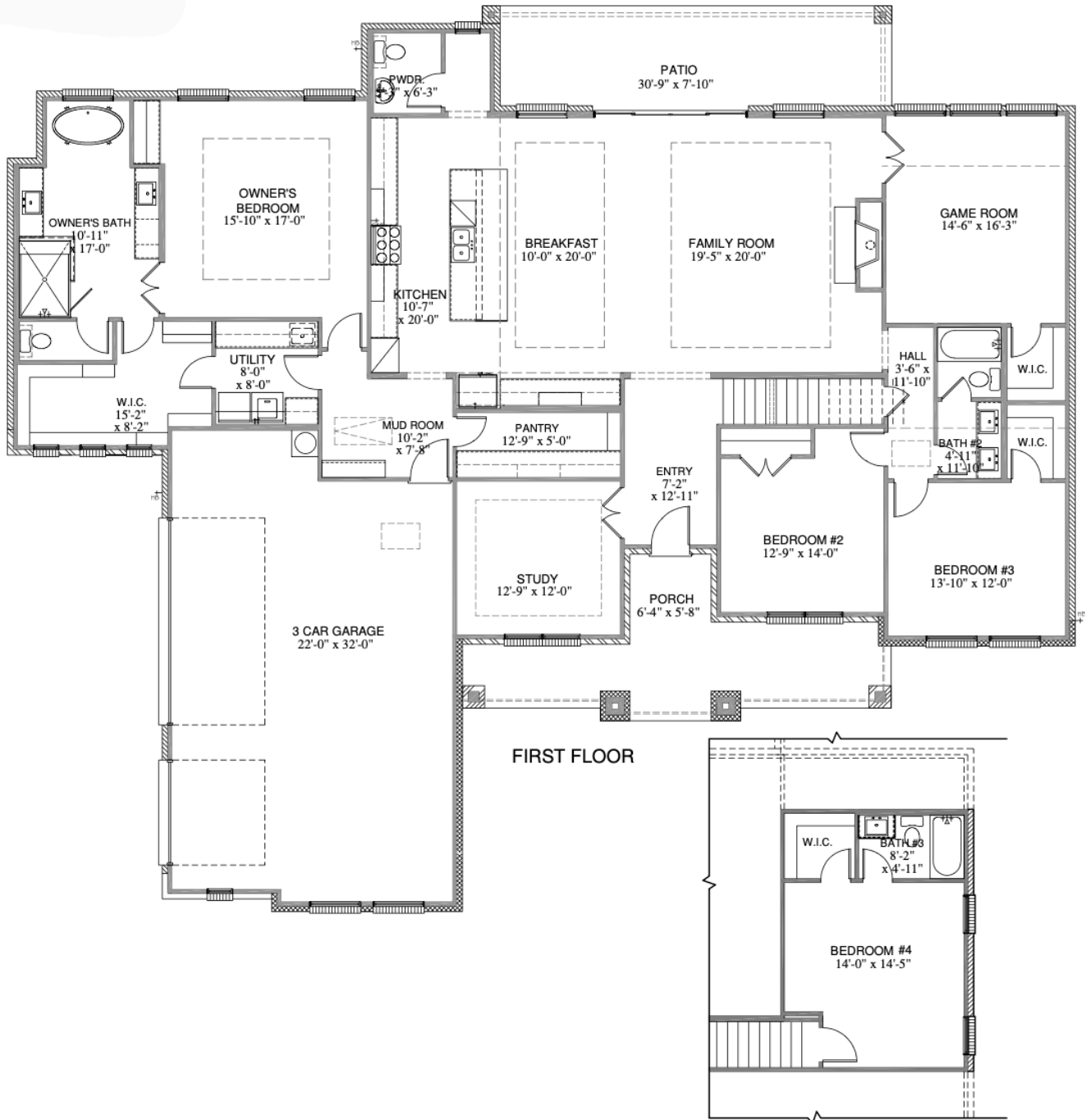
Please note: In an effort to continually improve our floor plans and elevations, Caliber Homes reserves the right to make alterations to the designs without prior notice.



CALIBER HOMES

CHARACTER REDEFINED

# 3361 SQ. FT THE REAGAN



## SQUARE FOOTAGE TOTALS

3055	1ST FLOOR
306	2ND FLOOR
491	COVERED PORCHES
827	GARAGE
4679	TOTAL A.U.R.

## SECOND FLOOR

All plans and elevations are subject to change without prior notice. All Caliber Homes floor plans & elevations are copyrighted. Caliber Homes will enforce copyright laws to their fullest extent. All plan numbers are approximations of square footage and may vary with alternate elevations.

Please note: In an effort to continually improve our floor plans and elevations, Caliber Homes reserves the right to make alterations to the designs without prior notice.