



AVONLEY HOMES

3548 POINTE DU HOC



RUDDER POINTE NEIGHBORHOOD

3 BDRM | 2 BATH | 1500 SF

The “Marigold” has an open, yet defined layout. Enjoy entertaining in the spacious living and dining areas all while admiring the features of this home including the open L-shaped kitchen with large island. The master suite is a perfect place to relax, with a garden tub, his and her sinks, and a walk-in shower. This home is full of functionality for you and your family. Fall in love with everything that this home has to offer and
Come Home to Avonley.

FEATURES:

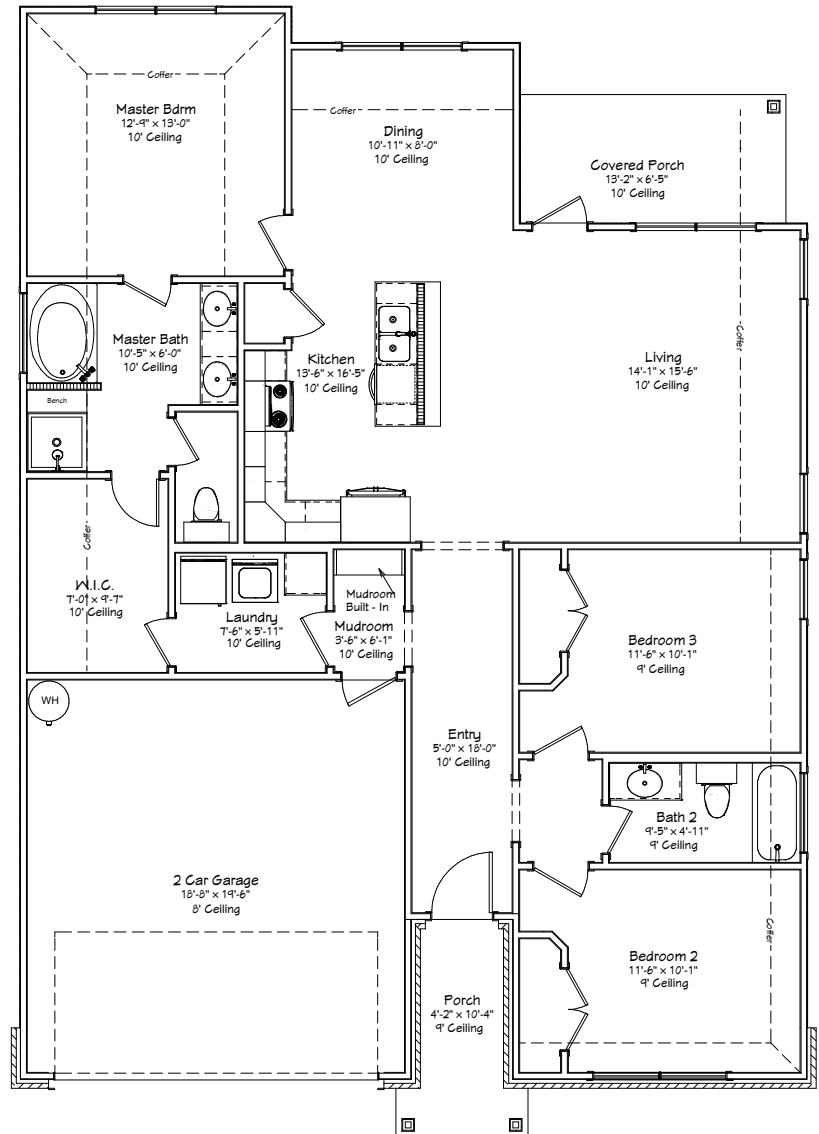
Covered Back Porch | Mudroom Cabinetry | Granite Countertops
Vinyl Plank Flooring | Stainless Appliances

COME HOME TO AVONLEY



Avonley Homes
979-321-7200
info@avonleyhomes.com

3548 POINTE DU HOC



3 BDRM | 2 BATH | 1500 SF

WWW.AVONLEYHOMES.COM

COME HOME TO AVONLEY | Avonley Homes is committed to giving families the home of their dreams. From simple comfort to expert craftsmanship, we promise you will be proud to call our house your home.