



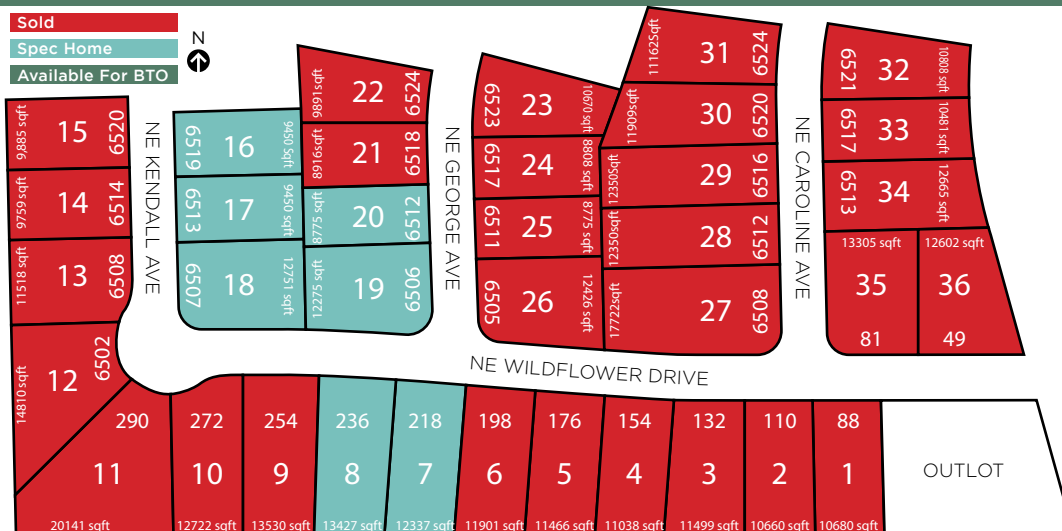
# SUNRISE POINTE

## PLEASANT HILL

### PLAT 6

www.jerryshomes.com

Sold  
Spec Home  
Available For BTO



LOT #	ADDRESS	TYPE	LOT SQFT	PRICE	STYLE
7	218 NE Wildflower Dr	STD/L	12,337	\$367,990	COPELAND
8	236 NE Wildflower Dr	STD/L	13,427	\$373,990	CEDAR
16	6519 NE Kendall Ave	DayL/R	9,450	\$TBD	CEDAR III
17	6513 NE Kendall Ave	DayL/L	9,450	\$TBD	LOLO/office
18	6507 NE Kendall Ave	DayL/L	12,751	\$TBD	DUKE EXP
19	6506 NE George Ave	STD/R	12,275	\$TBD	COPELAND
20	6512 NE George Ave	STD/R	8,775	\$TBD	CASCADE

**School District**  
Southeast Polk Community

**Nearest Schools**  
Four Mile Elementary  
Spring Creek 6th Grade Center  
Southeast Polk Junior High School  
Southeast Polk High School

**Nearest Grocery**  
2 miles to Fareway, 4 miles to Hy-Vee, 5 miles to Target  
5 miles to Walmart

**Nearest Gym**  
2 miles to Snap Fitness  
3 miles to Anytime Fitness  
3 miles to Orange Planet

**Nearest Shopping Center**  
7 miles to Outlets of Des Moines, 15 miles to Valley West Mall

**Home Improvement Store**  
5 miles to Lowe's  
6 miles to Menards

Tucked away in a quiet little neighborhood in Pleasant Hill, Sunrise Pointe is a hidden gem of a community found just east of the HWY 5 bypass. Off the beaten path, yet just minutes from access to the entire metro area. Excellent South East Polk schools with Four Mile Elementary, a community of neighbors who become friends, small town feel with plenty of amenities including parks, library, trails & local restaurants.

Dianna Elder | 641.780.8804 | dianna@teamelder.com



Listing information subject to change without notice.

#SINCE1957

# Our history builds your future.



Daylight lots are an additional \$4,000 above listing price. Walkout lots are an additional \$7,000 above listing price.