



SHELTER BAY

in Brunswick Forest

CLASSIC COASTAL COMFORT

The Shelter Bay by Kent Homes is a 4-bedroom, 3-bath model home that combines classic coastal charm with modern comfort. Thoughtfully designed for everyday living, it features a finished bonus room with full bath, private study, expanded enclosed loggia, and an angled garage. Light, bright, and perfect for both relaxing and entertaining.

Ready to see it for yourself? Call us today to schedule your virtual or in-person tour today!

3 BEDROOM

3 BATHROOM

3,029 SF

+ BONUS ROOM
& STUDY

3226 CALUSA COVE, LELAND NC 28451

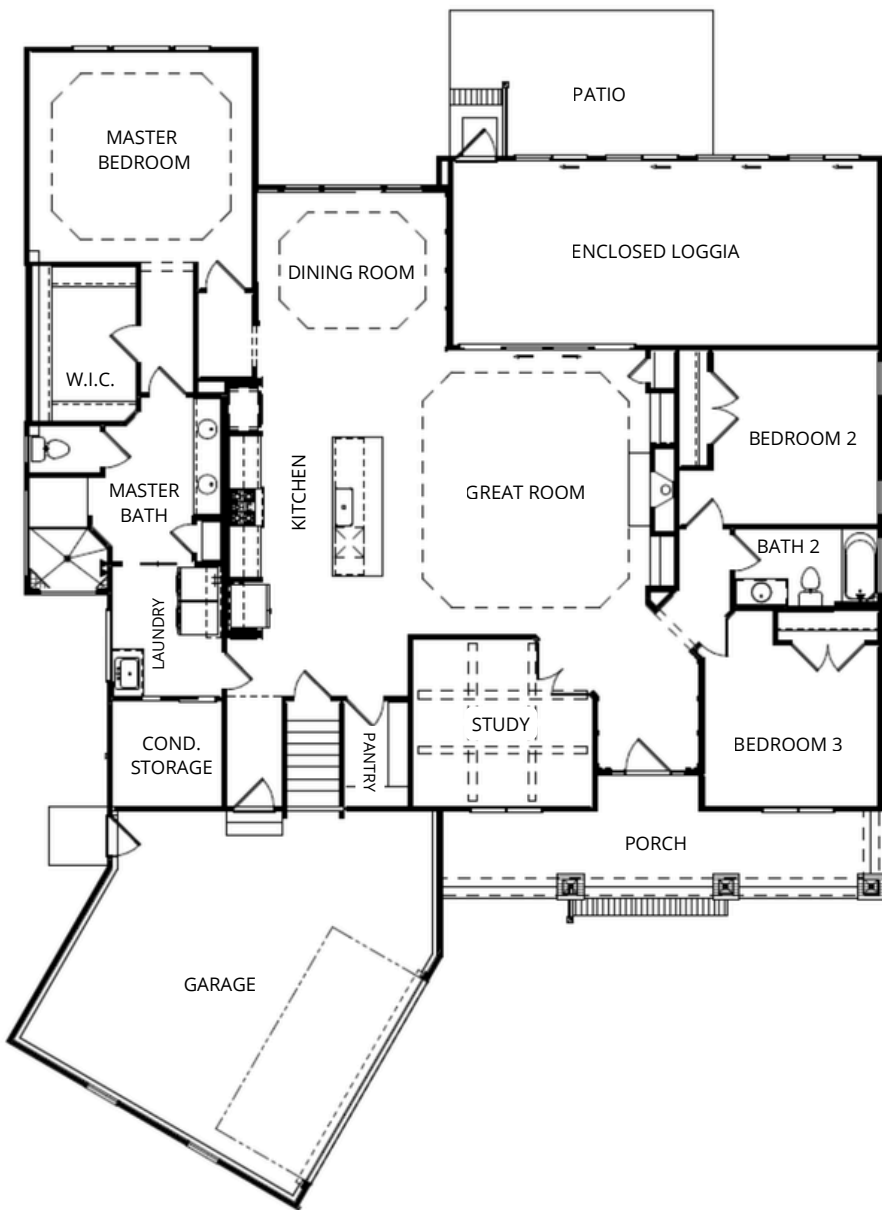
KENT *homes*
A SMARTER WAY TO A LUXURY HOME

CONTACT:

✉ CAMERON@KENTHOMES.NET

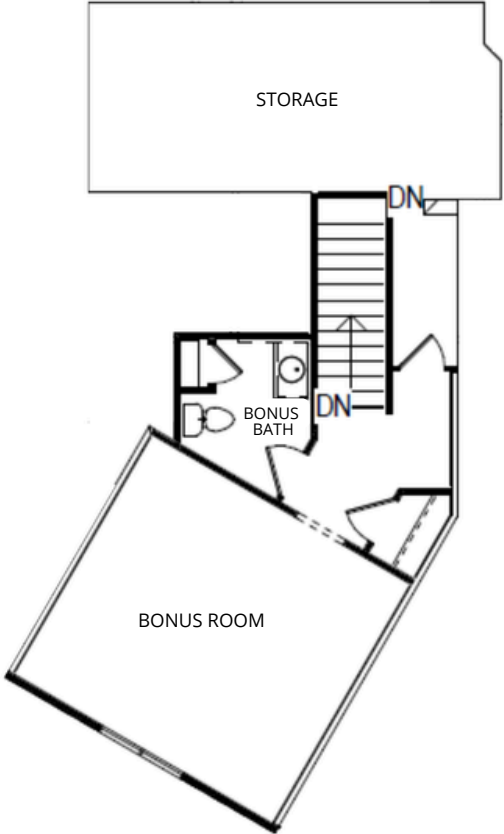
📞 910.902.1007

♥ WWW.KENTHOMES.NET



Spacious Layout

3,029 heated sq ft
 562 garage sq ft
 200 covered outdoor living sq ft
 House Dimensions:
 60' 3" (W) - 79' 10" (L)



- Structural Options & Upgrades*
- Elevation B2
 - Finished Bonus Room & Full Bath
 - Designated Study
 - Brick Bases on Front Porch Columns
 - Angled Garage
 - Garage Convenience Door
 - Executive Pantry
 - Enclosed and Expanded Loggia
 - Laundry Room Sink



A SMARTER WAY TO A LUXURY HOME

Pricing subject to change at anytime and without notice.

Any drawings and square footage notations are approximate and are only to be used for reference. They should not be relied upon as representations, expressed or otherwise, of the final detail of your home.

REV. 4.7.26
 3226 CALUSA COVE