



284 E. CONCORD FARM LANE  
DRAPER, UTAH



  
**CONCORD**  
LANE

## LOT 8 | SOUTHWICK



4 Bedrooms



2.5 Bathroom



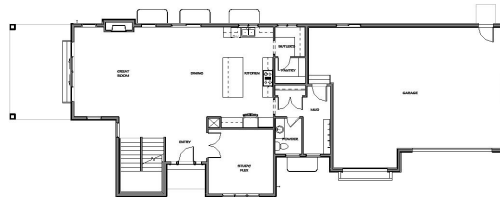
3 Car Garage



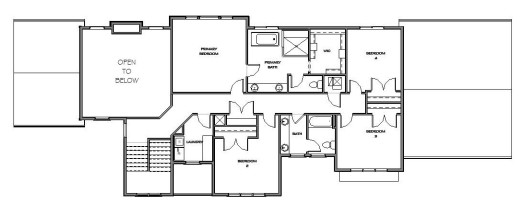
4,126 SF Total  
2,929 SF Finished



Basement



Main Floor



Main Floor

# EXTERIOR COLOR PACKAGE



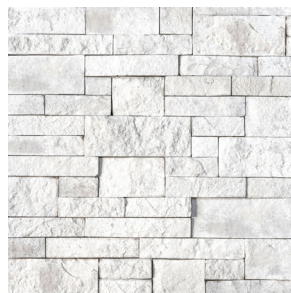
## ROOFING

IKO Cambridge:  
Dual Black



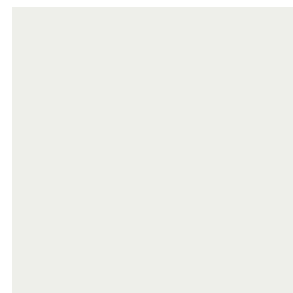
## SOFFIT/FASCIA

Ply Gem Mastic:  
Black



## STONE COLOR

HARRISTONE  
White Sand Divino  
ledge dry stack



## STUCCO COLOR, BOARD & BATTEN

SW7006:  
Extra White



## LAP SIDING COLOR

SW9634:  
Morning at Sea



## FRONT DOOR

SW6991:  
Black Magic



## RAIN GUTTERS

Black



## GARAGE DOOR COLOR

Flat Panel:  
Black

For details on the interior package, please request an Interior Package booklet from the agents.

The information provided is for illustrative purposes only and may not be exact. All prices, materials, measurements, images, and renderings are subject to change without notice.

**primed**<sup>RE</sup>  
REAL ESTATE

134 W. 13100 S., Suite 200  
Draper, Utah 84020

[www.primedre.com](http://www.primedre.com)

Call our preferred lender for details on incentives,  
rate, and borrower specific qualifications.  
Jordan Duckett: (801) 636-9069 with Security National Mortgage.



**SANDY EWING**

ASSOCIATE BROKER/  
SALES CONSULTANT

(801) 652-4424  
[sandyewing@primedre.com](mailto:sandyewing@primedre.com)



**DESI EDDY**

NEW HOME  
SALES CONSULTANT

(801) 574-9050  
[desieddy@primedre.com](mailto:desieddy@primedre.com)