



Cute as a button and so practical! The Juniper Cottage features a huge great room with plenty of space for a desk nook for work-at-home options. The private primary bedroom suite is extraordinarily roomy with an extra-large walk-in closet. And for a nice bonus: a private patio for outdoor living!

Features:

- Nine foot first floor ceiling height
- Open floor plan
- Large Kitchen island
- Primary Bedroom Suite features walk-in closet and private bath
- Main floor Laundry Room/Mudroom off Garage
- Main floor Powder Room
- Extra Garage storage area
- Eleven foot by eleven foot concrete patio

Optional Features:

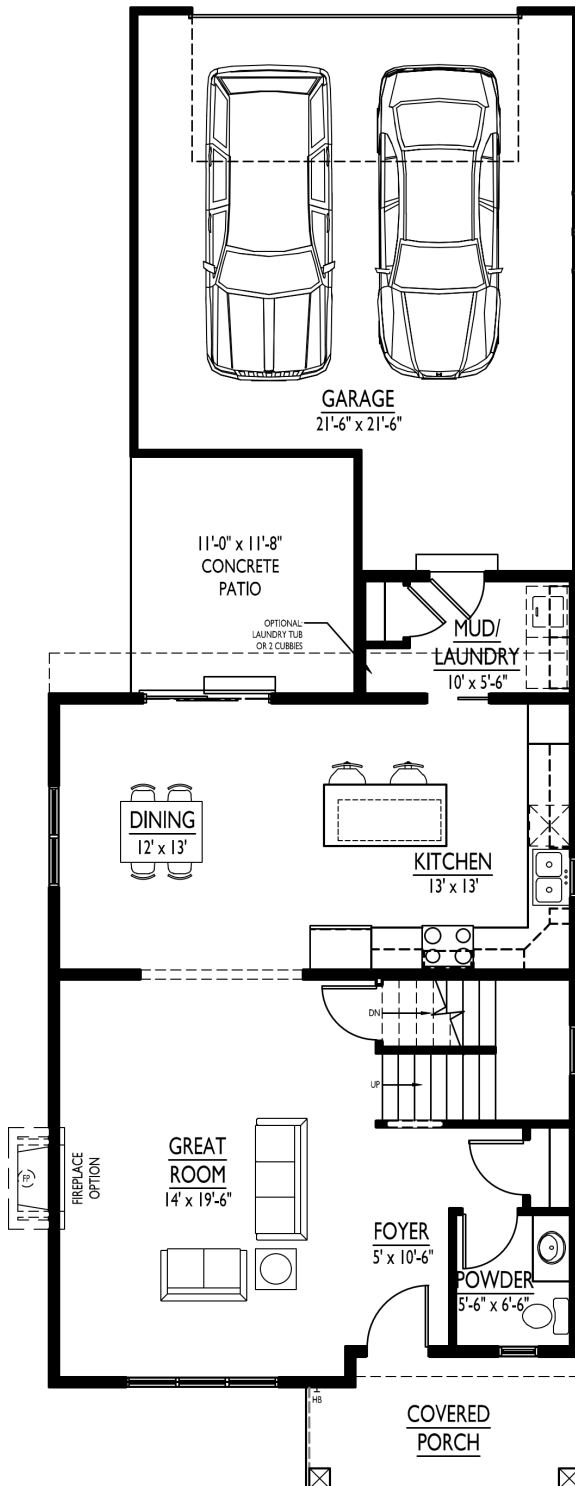
- Eight foot nine inch basement foundation walls
- Fireplace in Great Room
- Tile shower in Primary Bathroom
- Built-in cubbies or utility tub in Laundry/Mudroom
- Alternate Main Bath with privacy door
- Finished lower level

Encore Homes reserves the right to make changes without notice. This information is not guaranteed and is subject to verification.

6840 Schneider Road Middleton, WI 53562 | Office: 608.836.9601
www.EncoreBuildsMadison.com

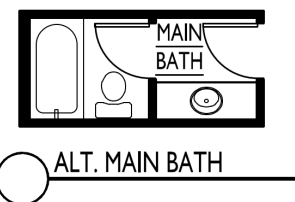
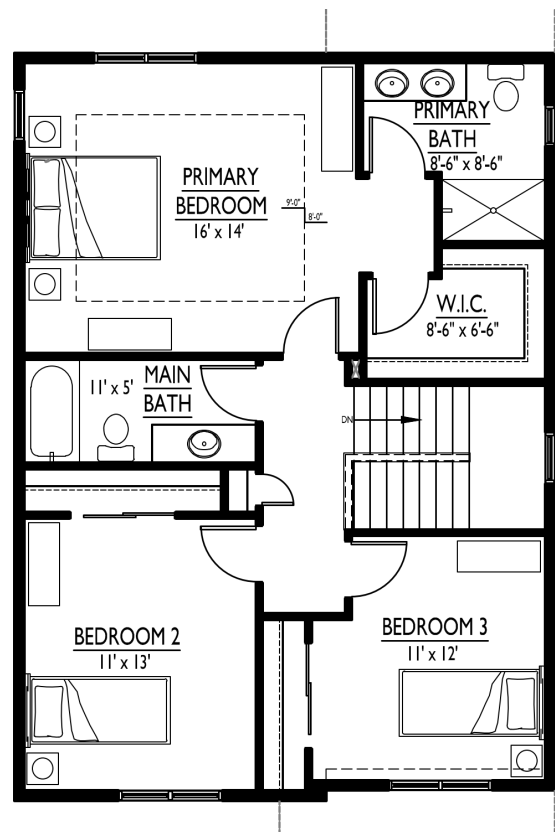
1st Floor

934 SF



2nd Floor

931 SF



*Illustrated dimensions are approximations, simplified for this drawing.
Final construction dimensions may vary from numbers shown here.*