



Scan to View Home



**Lot#:** TR-76 **MLS:** 766461 **Plan:** Gossamer **Bedrooms:** 3 **Baths:** 2.5 **Total Sqft.:** 2,144

### Exterior:

- Two-Car Garage
- Stone Facade
- Craftsman Elevation
- Pressure-Treated Deck

### Gourmet Kitchen:

- Quartz Countertops
- Tile Backsplash
- Kitchen Island with Level Overhang
- Stainless Steel Appliances
- Painted Cabinets / Crown Molding
- Breakfast Nook

### Interior Features:

- Laminate Plank Flooring throughout most of 1st Floor
- Open Foyer & Adjoining Dining Room
- Two-Story Great Room
- Additional Recessed Lights
- Private Flex Space / Office on 1st Floor
- Laundry Room on 1st Floor
- Prewires for Ceiling Fans in Flex Space & All Bedrooms
- Open Loft Overlooking Great Room
- Full Basement

### Luxurious Owner's Suite:

- Private Location on 2nd Floor
- 2 Large Walk-In Closets
- Spa-Styled Bath with Double Quartz Vanities, Glass-Enclosed Tiled Shower & Soaking Tub



**Schedule Your Appointment Today!**

**Sandy Sekerak, Sales Manager | 610-928-0555 | SandyS@KayBuilders.com**



**KAY BUILDERS**  
DECADES OF EXCELLENCE  
EST. 1961

**www.KayBuilders.com**

Pricing Subject to Change Without Notice. Subject to Errors and Omissions.  
Home May Not Be Exactly As Shown in Pictures. See Sales Manager for Details.

12.02.25



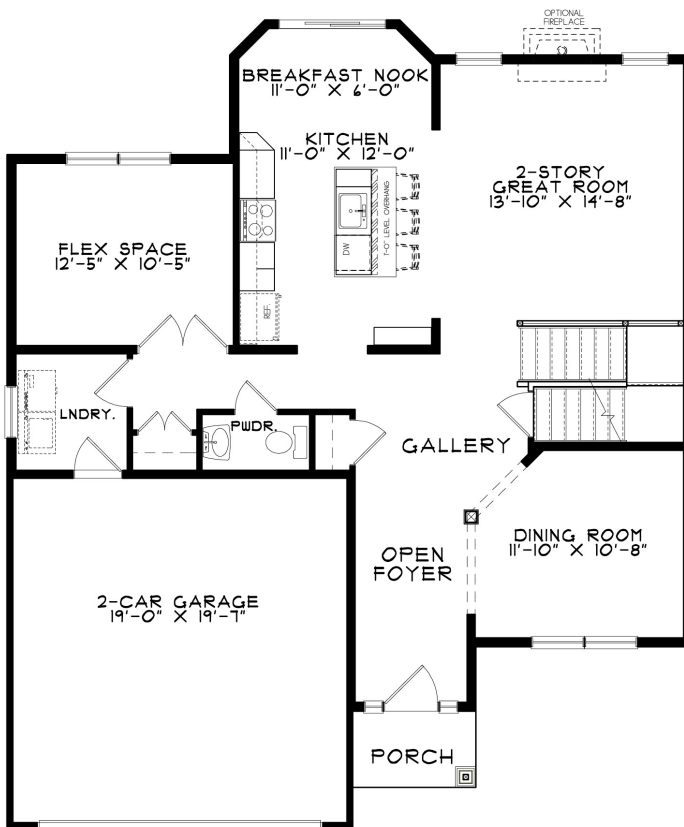
# THE FIELDS AT TWIN RUN

## Community Features:

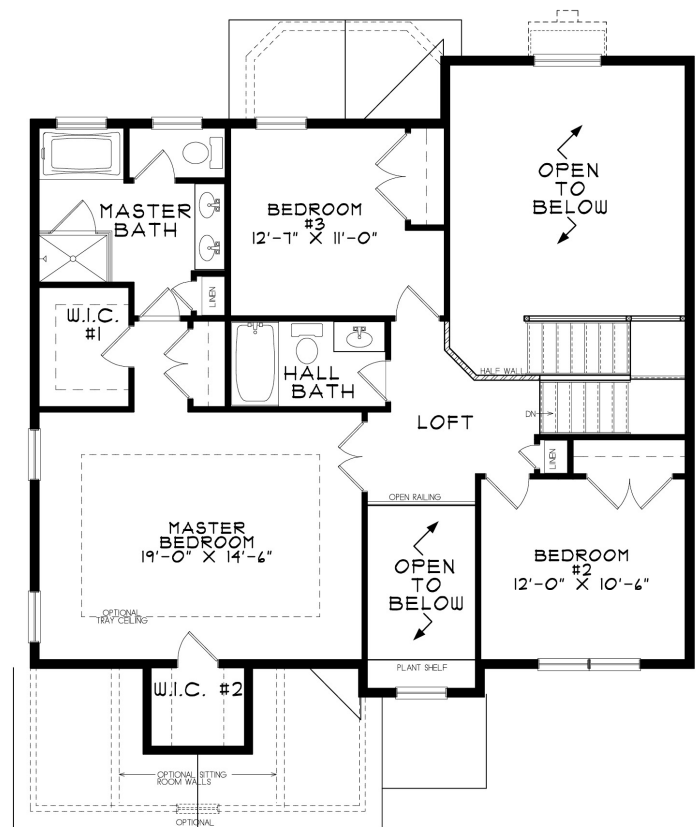
- Located in Highly-Rated East Penn School District
- Walking Path and Community Open Space
- Superior Curb Appeal & Unique Home Pairings
- Convenient location close to Healthcare, Shops, Dining, Downtown Emmaus, Recreation Areas, & Much More!

3721 Samantha Lane | Macungie, PA 18062

## Floor Plan: Gossamer



FIRST FLOOR



SECOND FLOOR

Schedule Your Appointment Today!

Sandy Sekerak, Sales Manager | 610-928-0555 | SandyS@KayBuilders.com



**KAY BUILDERS**  
DECADES OF EXCELLENCE  
EST. 1961

[www.KayBuilders.com](http://www.KayBuilders.com)

Home Pricing Subject to Change Without Notice. Subject to Errors and Omissions.  
Home May Not Be Exactly As Shown in Pictures. See Sales Manager for Details.

12.02.25

