

GUINEVERE

4 BEDROOM + | STUDY | LOFT | PATIO | 2 1/2 BATH + | 2 CAR GARAGE | 2,874 SQ. FT.

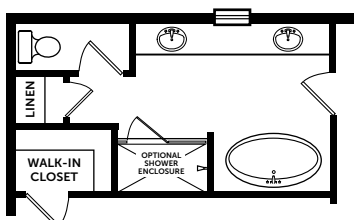
ELEVATION A



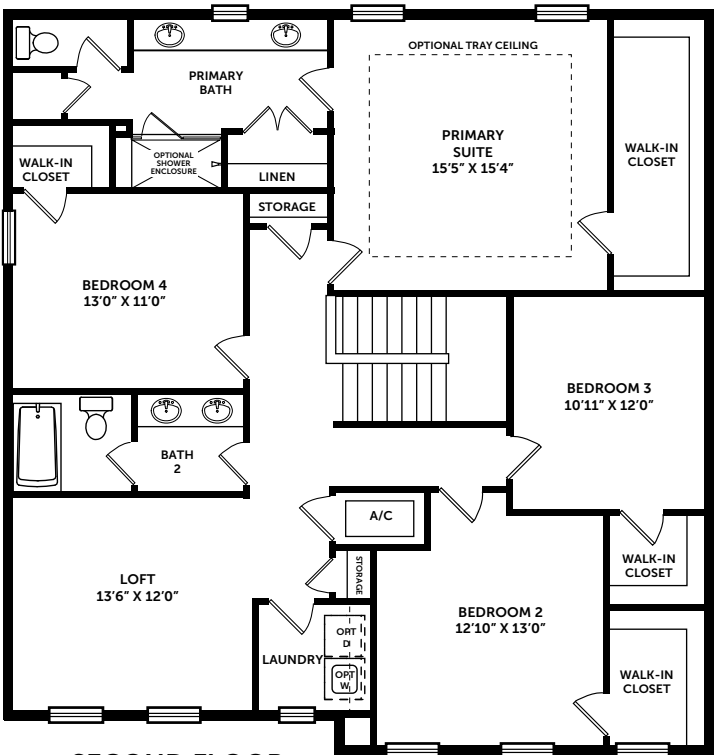
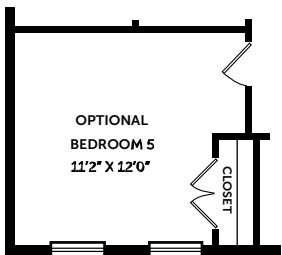
ELEVATION C



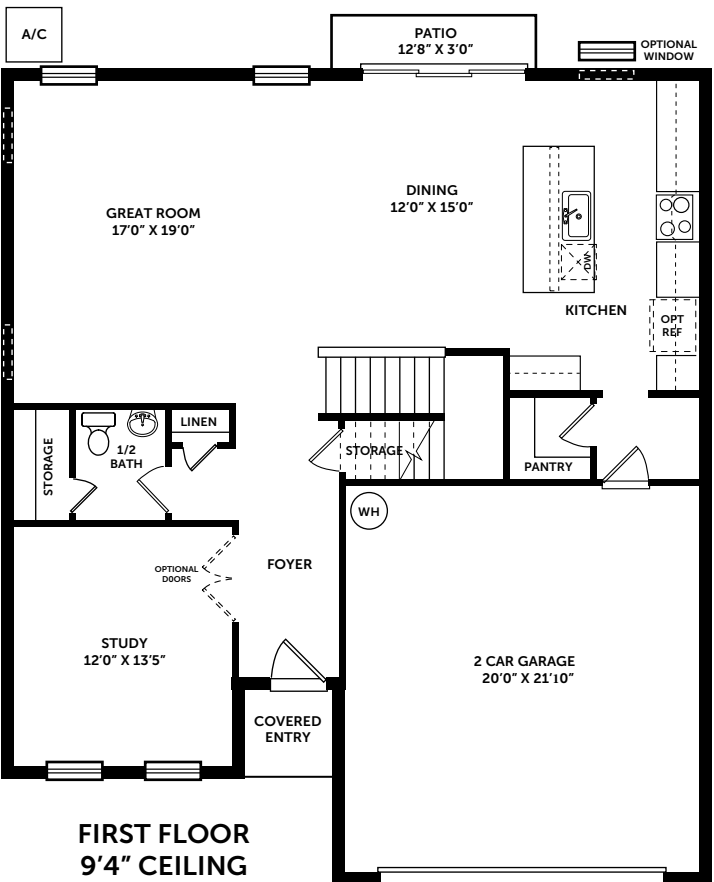
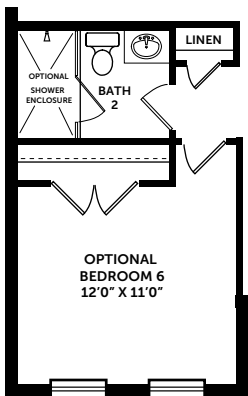
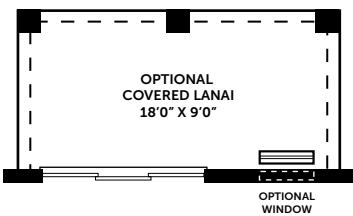
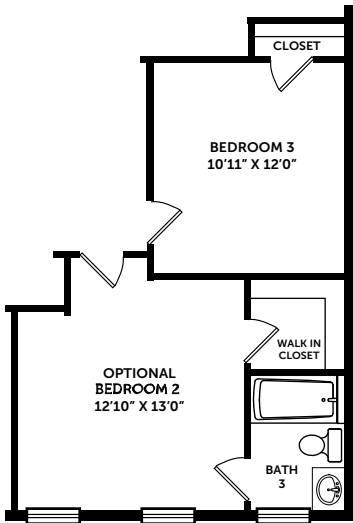
ELEVATION E



SEE ATTACHED FLOORPLAN



SECOND FLOOR
8" CEILING



FIRST FLOOR
9'4" CEILING

