

**DABBERT**  
CUSTOM HOMES





SCAN FOR  
**CURRENT PRICING**  
INCLUDES 2-STALL GARAGE



# THE *Marjia*

## PROPERTY FEATURES

- Three-level split
- Covered front door entry
- 12' ceilings on main floor
- Large pantry
- 6' island
- Large owner's suite & closet
- Two bedrooms on upper floor
- One bedroom on lower floor
- Optional fourth level basement
- Optional kitchen in back
- Insulated & sheetrocked garage with floor drain

 3 BDRM  3 BATH  2,335 SQFT

 2 CAR  28' WIDE

 3 CAR  40' WIDE

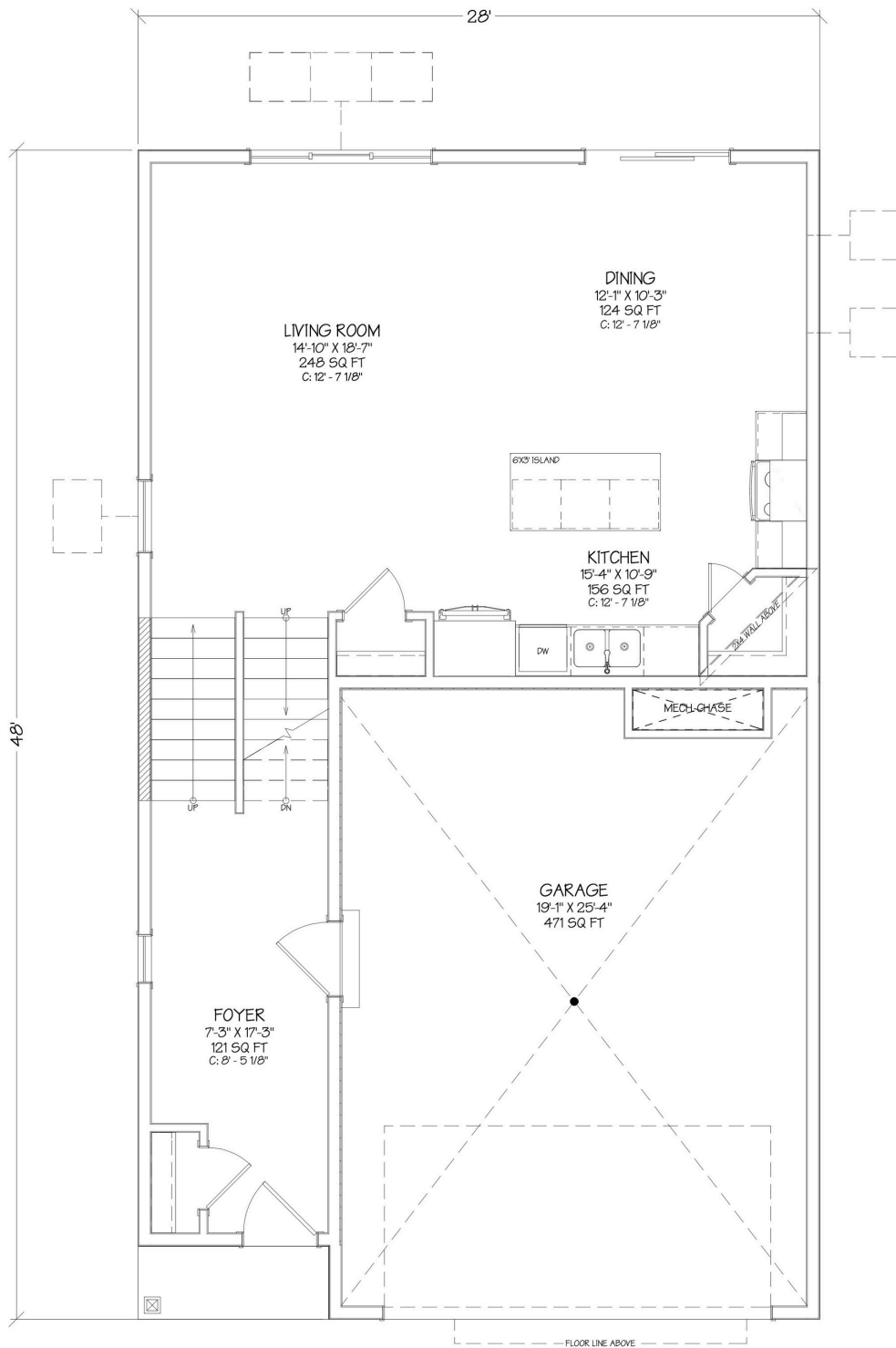
*Mike Gillund*

DABBERT CUSTOM HOMES  
REPRESENTATIVE

701-371-9163  
MIKE@DABBERTHOMES.COM  
DABBERTHOMES.COM

**B. BEYOND**  
REALTY  
*Be Moved.*  
BEYONDDREALTYFM.COM

# THE MARIA



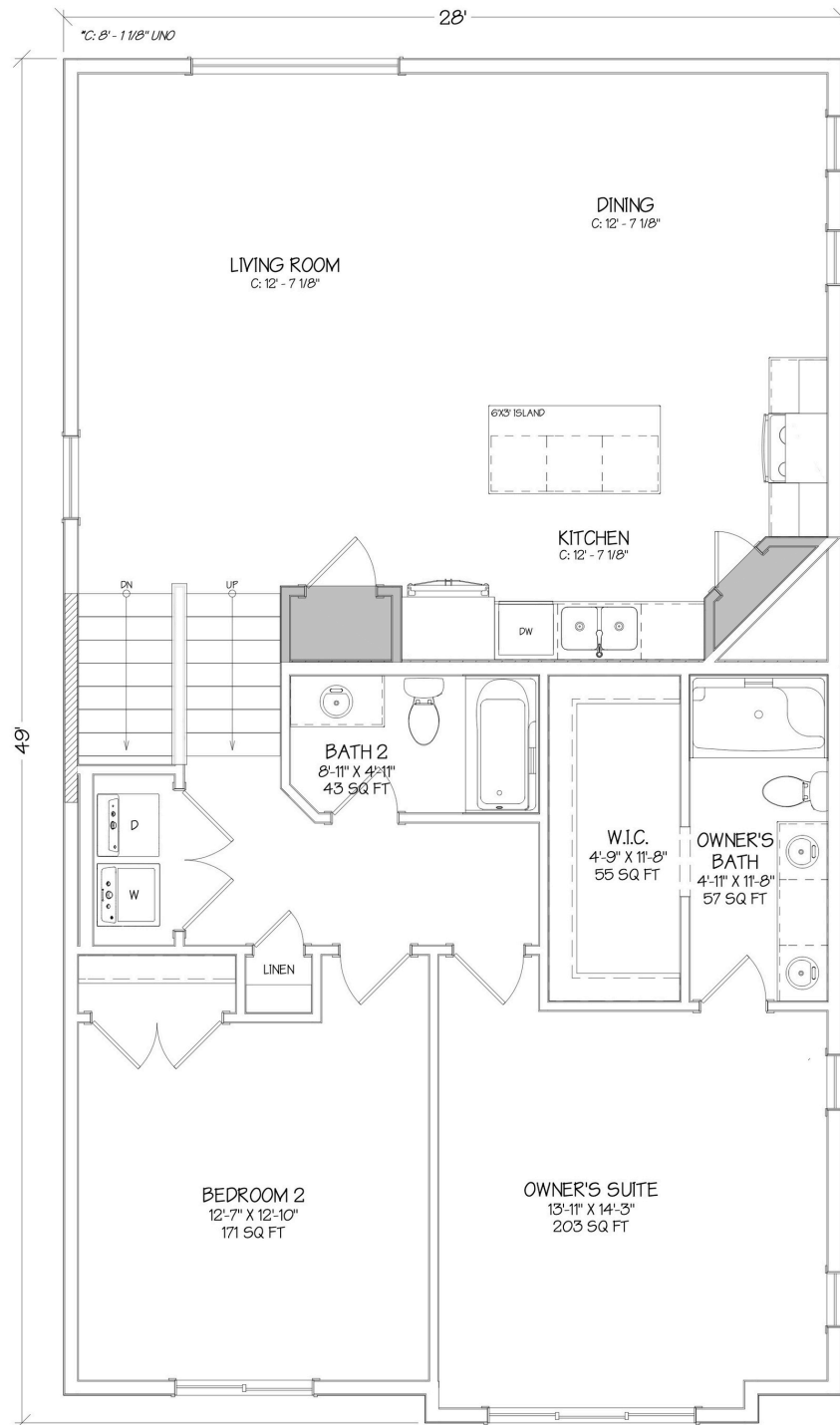
**Maria 2.0 - Base Plan - Main Floor - 791 sq ft**

THIS PLAN IS FEDERALLY COPYRIGHTED BY



©Dabbert Custom Homes. Plans are copyrighted and/or otherwise subject to intellectual property rights of Dabbert Custom Homes, LLC and/or others and cannot be reproduced or copied without Dabbert Custom Homes, LLC prior written consent.

# THE MARIA

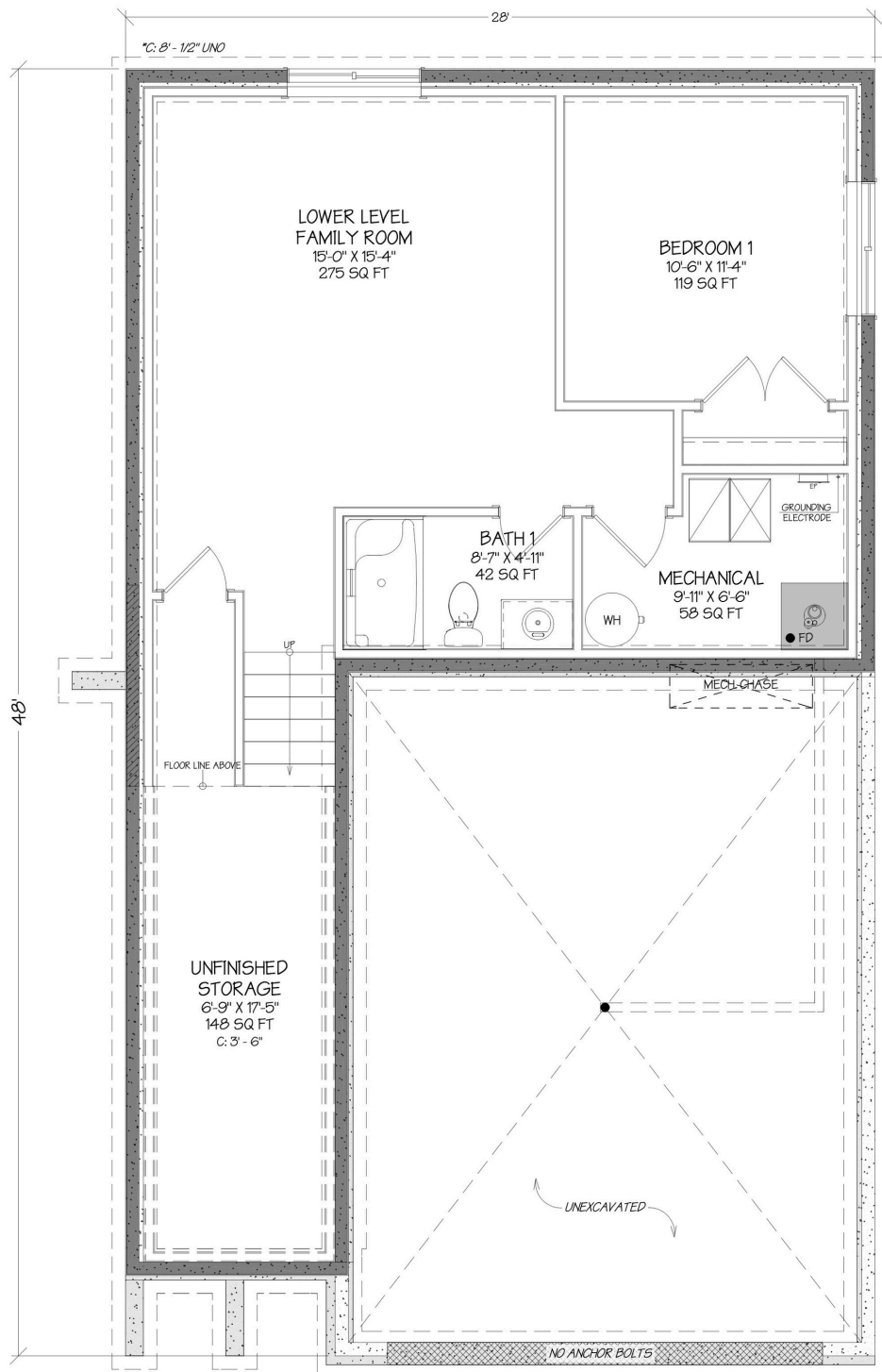


**Maria 2.0 - Base Plan - Upper Floor - 1,356 sq ft**

THIS PLAN IS FEDERALLY COPYRIGHTED BY



# THE MARIA



**Maria 2.0 - Base Plan - Lower Floor - 826 sq ft**

THIS PLAN IS FEDERALLY COPYRIGHTED BY

