

HAYDEN A4

TWO STORY | 4-5 BEDROOMS | 3-4 BATHROOMS | 2,660-2,904 SQ FT | ELEVATION A4



2-CAR FRONT ENTRY GARAGE



3-CAR FRONT ENTRY GARAGE



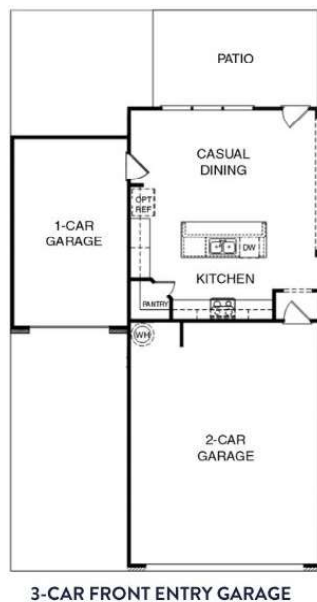
2-CAR SIDE ENTRY GARAGE



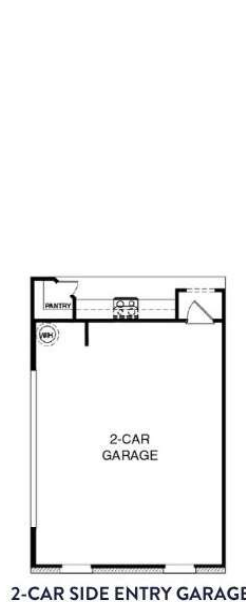
3-CAR SIDE ENTRY GARAGE



2-CAR FRONT ENTRY GARAGE



3-CAR FRONT ENTRY GARAGE



2-CAR SIDE ENTRY GARAGE

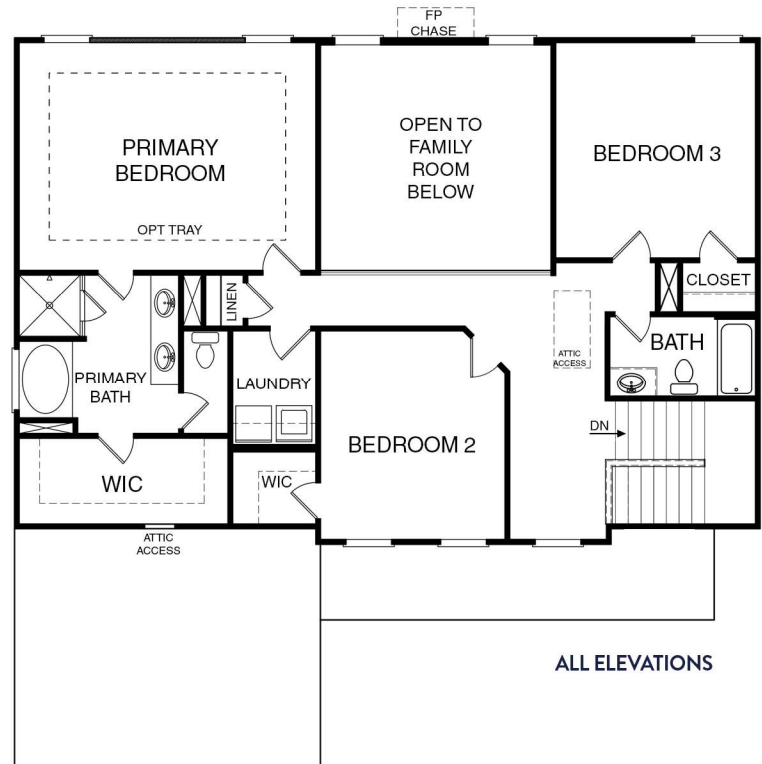
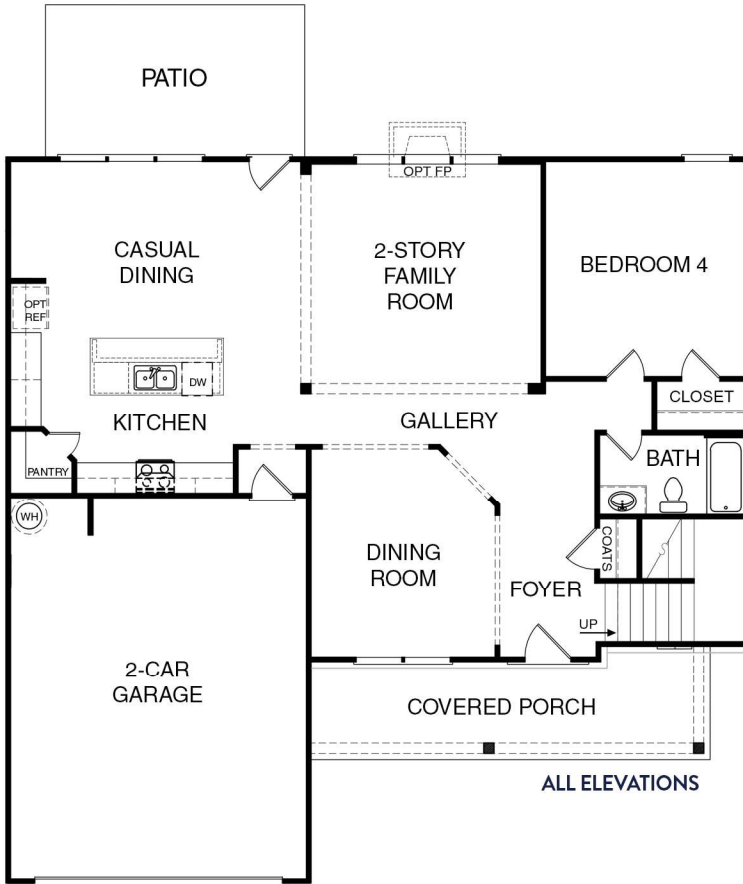


3-CAR SIDE ENTRY GARAGE

TWO-STORY | 4-5 BEDROOMS | 3-4 BATHROOMS | 2,660-2,904 SQ FT | FLOOR PLAN

- FIRST FLOOR -

- SECOND FLOOR -

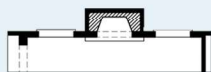


- FIRST FLOOR OPTIONS -

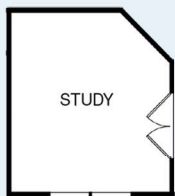
- SECOND FLOOR OPTIONS -



STAIRS TO BASEMENT



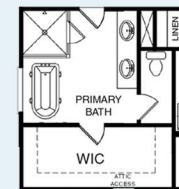
FIREPLACE



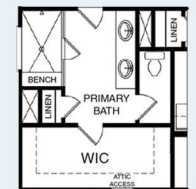
STUDY ILO
DINING ROOM



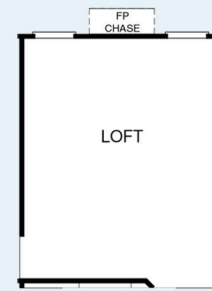
5TH BEDROOM ILO
2-STORY FAMILY ROOM



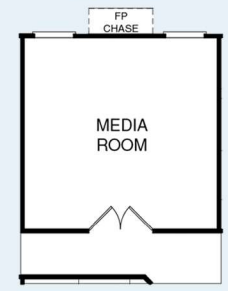
FREESTANDING
TUB



ENLARGED
SHOWER



LOFT ILO 2-STORY
FAMILY ROOM



MEDIA ROOM ILO
2-STORY FAMILY ROOM