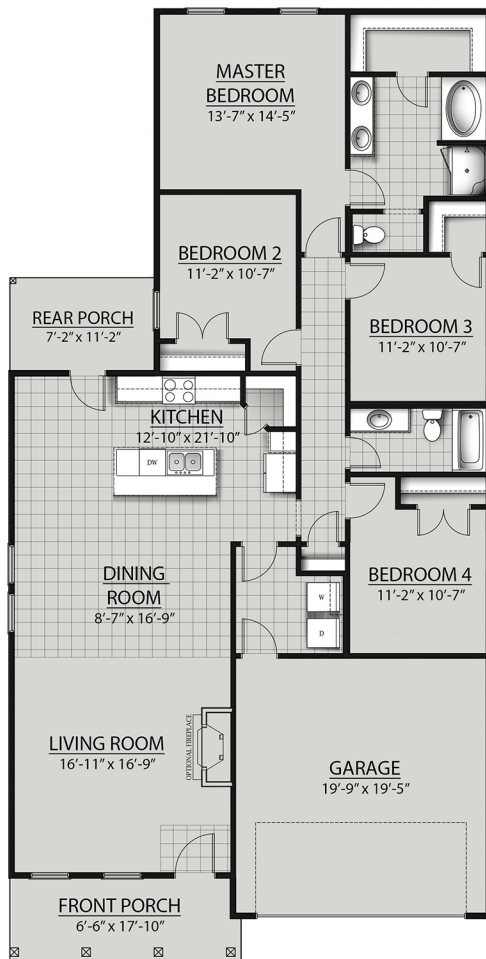


# THE OSMOND H V PLAN



## Living Area

1830 Square Feet

## Total Area

2427 Square Feet

## Features

- Open Floor Plan
- Four Bedrooms, Two Bathrooms
- Two Car Garage
- Covered Rear & Front Porch
- Siding Exterior
- Walk-In Pantry
- Recessed Can Lighting In Kitchen
- Double Master Vanity
- Walk-In Master Closet
- Garden Master Tub
- Separate Master Shower



Floor plans and elevations are subject to change without notice. Elevations and renderings are artistic conceptions and may not accurately depict home styles. Characteristics, including but not limited to windows, doors, plan configurations and orientations are subject to change per home site. Information contained in this flyer is subject to errors, omissions, changes, withdrawals and prior sales without notice.