

The Glenwood Farmhouse

Ready Home for Sale







Driveway & Landscaping not included.
Not actual home, but similar plan.

\$799,900*

June Occupancy

Talbot's Woods (Lot 43)
407 Ingleside Court
Dousman, WI 53066

-  4 Bedrooms
-  2.5 Bathrooms
-  2,804 SF
-  3 Car Garage

Directions:

I-94 exit Hwy 67. South on Hwy 67. Left on Hwy 18. Right on W Talbot's Woods Drive into neighborhood.

*Price subject to change without notice.



KITCHEN FEATURES

- Designer Kitchen with painted upper cabinets with under cabinet lighting, crown molding, soft close doors/drawers & roll trays
- Quartz countertops, tile backsplash, Kohler® Cairn sink, island w/ stained cabinets & flush snack bar
- Butler's pantry w/ quartz countertop
- GE® kitchen appliance package w/built-in microwave, dishwasher, slide-in gas range, chimney style hood & built-in look French door refrigerator in slate finish

MAIN LEVEL FEATURES

- 16'x12' sunroom w/ large transom windows
- Luxury vinyl plank flooring in foyer, office, great room, kitchen, nook, sunroom, butler's pantry, laundry, mudroom, powder room, bath 3, and bath 2
- Gas fireplace w/ stacked stone surround & boxed mantel w/ returns
- Double swing glass doors in office
- Separate laundry & mudroom
- Built-in boot bench in mudroom
- Laundry room w/ cabinets & counter/folding table
- 2' side bump at laundry/mudroom
- Finished basement staircase
- Solid core doors
- Select jamb & cased windows

MASTER SUITE FEATURES

- Box up ceiling & large walk-in closet w/ melamine shelving
- His & hers vanities w/ added drawer storage in between
- 3.5'x6' tiled to ceiling shower w/frameless glass door, & wall to wall tiled shelf
- Tile flooring
- Separate commode room

ADDITIONAL FEATURES

- 4 1/4" base & 3 1/2" casing
- Extended 3 car garage w/ drywalled & insulated walls w/ insulated overhead garage door & belt-driven ultra quiet garage door opener
- Basement bathroom plumbing rough in
- Egress windows
- Pella® windows in Fossil
- James Hardie® fiber cement siding, trim, & corner boards
- Dura Supreme® Cabinets
- Moen® Faucets & Kohler® Toilets
- Maxim® Light Fixtures
- Smooth drywall finish
- 2x6 Construction
- Focus on Energy Certified
- Builder Warranty Included



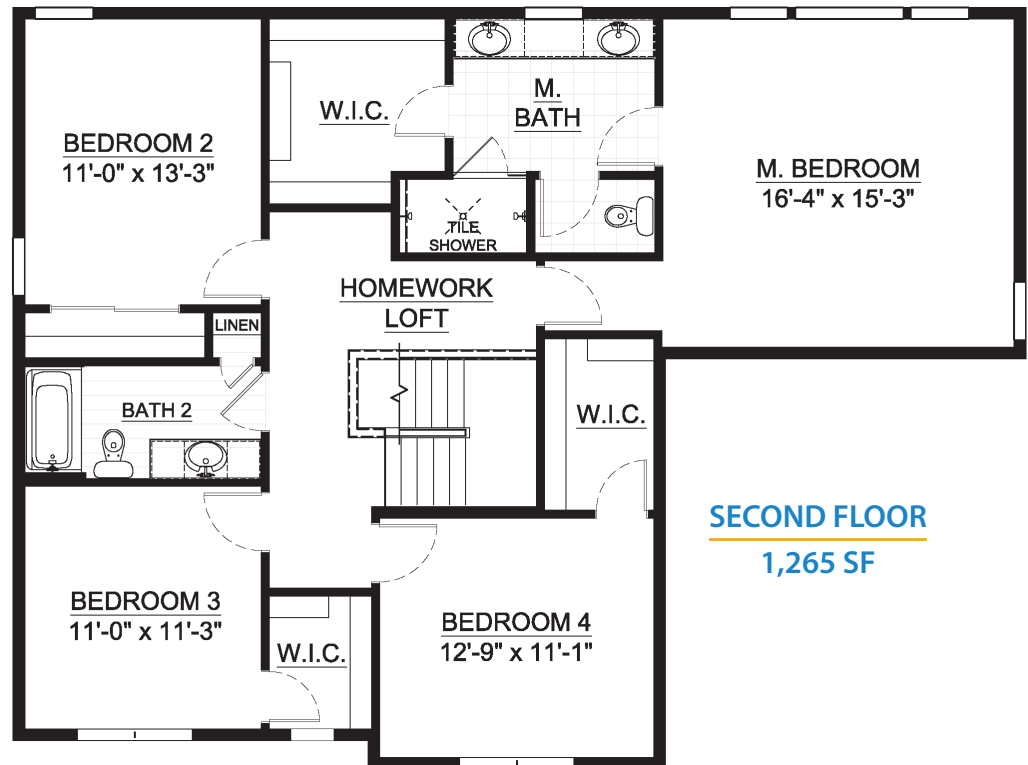
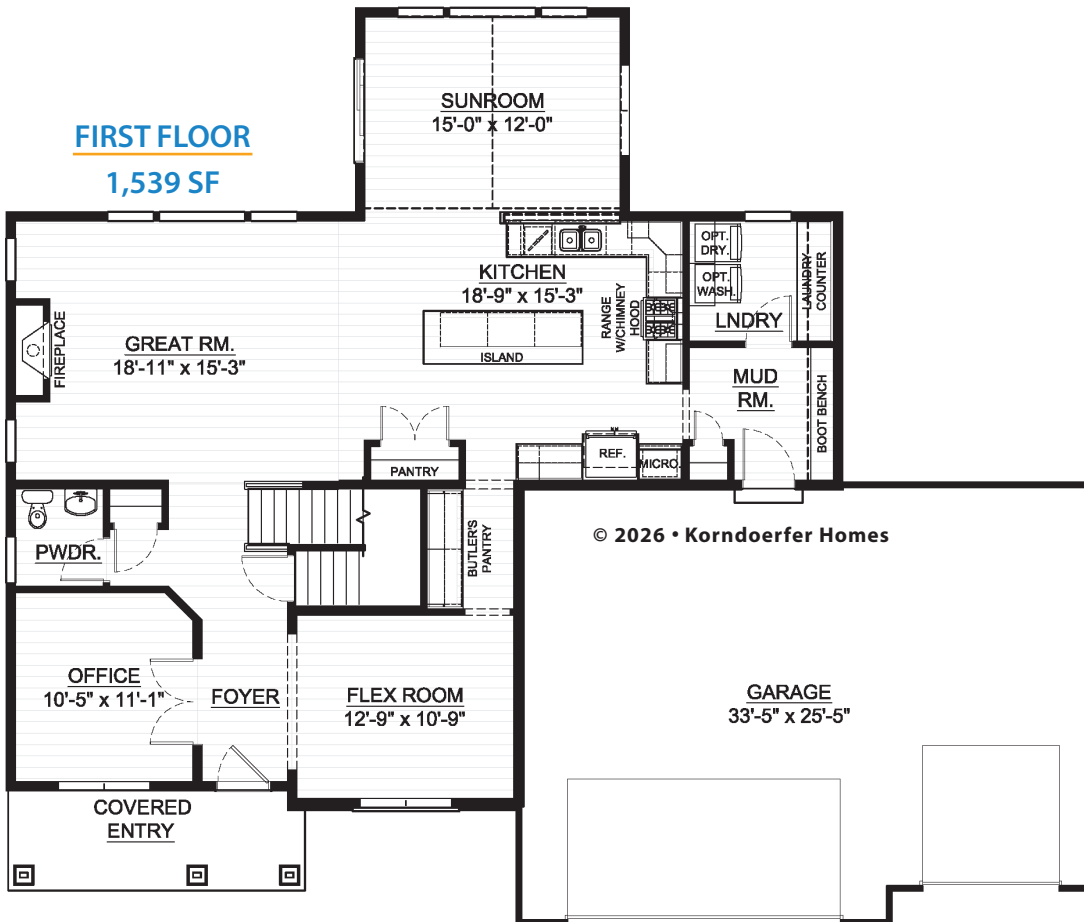
ASK RYAN!

Online Sales Consultant
262-884-9551
sales@korndoerferhomes.com

Floor Plan on Other Side →



The Glenwood Farmhouse Floor Plan



ASK RYAN!

Online Sales Consultant
262-884-9551
sales@korndoerferhomes.com

