

DESIGN

FATE - 3109F



Craftsman



Modern Farmhouse



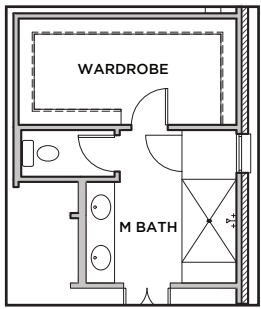
Tudor Revival



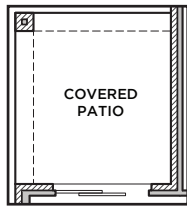
French Eclectic



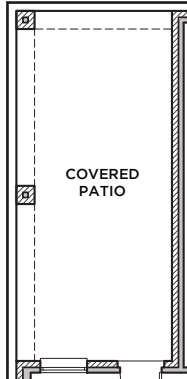
All Product including Architectural Designs, ©2000-2023, Shaddock Homes, LTD., All rights reserved. There may be existing or future design changes made in the floorplans, building products, methods, square footage or designs used in our homes that are not reflected in our information, sales center or in our models. The materials, designs, square footages, features, and amenities shown are based upon current development plans, which are subject to change without notice. No guarantee is made that the designs, square footages, materials, features, and amenities depicted by artist's renderings or otherwise described will be built, or if built, will be of the same type, size or nature as depicted or described. All stone elevations, metal roofs, cast stone door and window headers and solid sawn cedar posts are optional, but available via change order. Front doors will match the specification sheet or chosen door upgrade. Prices and terms subject to change without notice. **REVISION DATE: 6.13.2022**



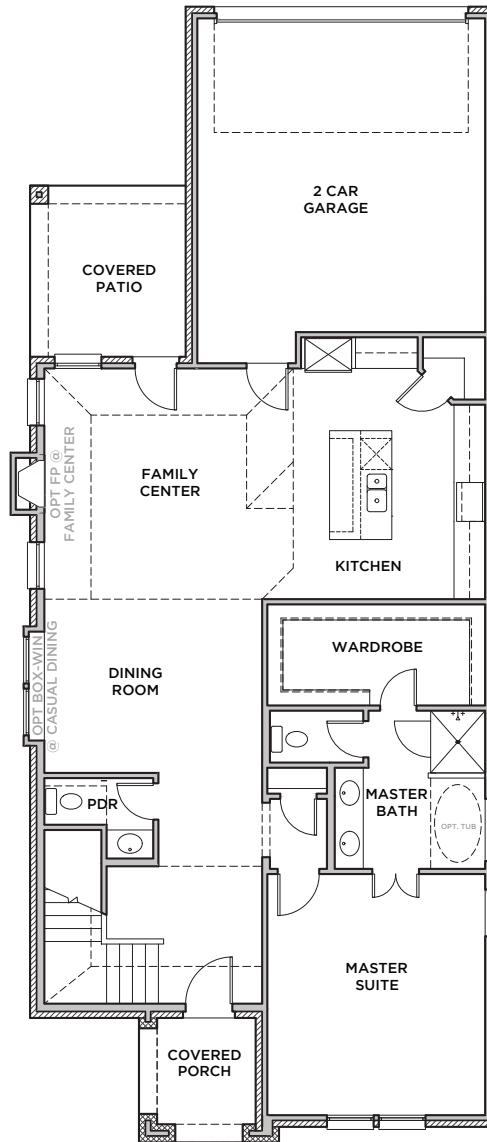
OPT LARGER SHWR ILO TUB @ M BATH
(THIS OPT SUBTRACTS FOR WARDROBE)



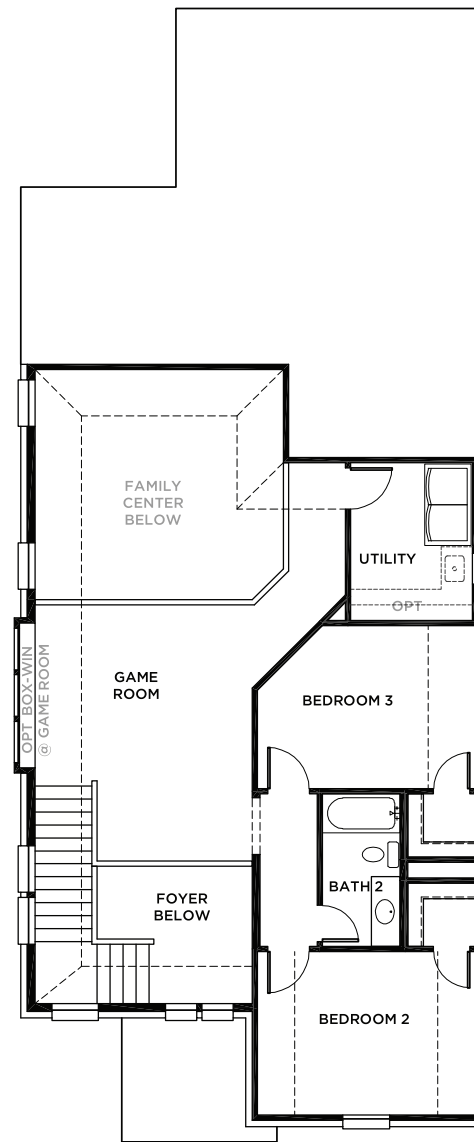
OPT 6' SGD @ CASUAL DINING



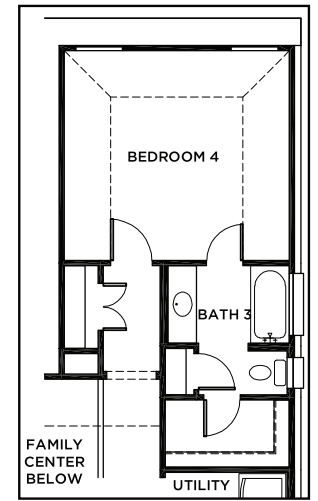
OPT 11'-6" EXT CVD PATIO



FIRST FLOOR



SECOND FLOOR



OPT BED 4 & BATH 3

FATE 3109

(6.13.22)

	S,FT
First Floor	1401
Second Floor	869
Total Living Area	2270
2 Car Garage	432
Covered Patio	110
Covered Porch	61
Total Area	2873

Options

Bed 4 & Bath 3	409
Ext. Patio	115

SHADDOCK HOMES